

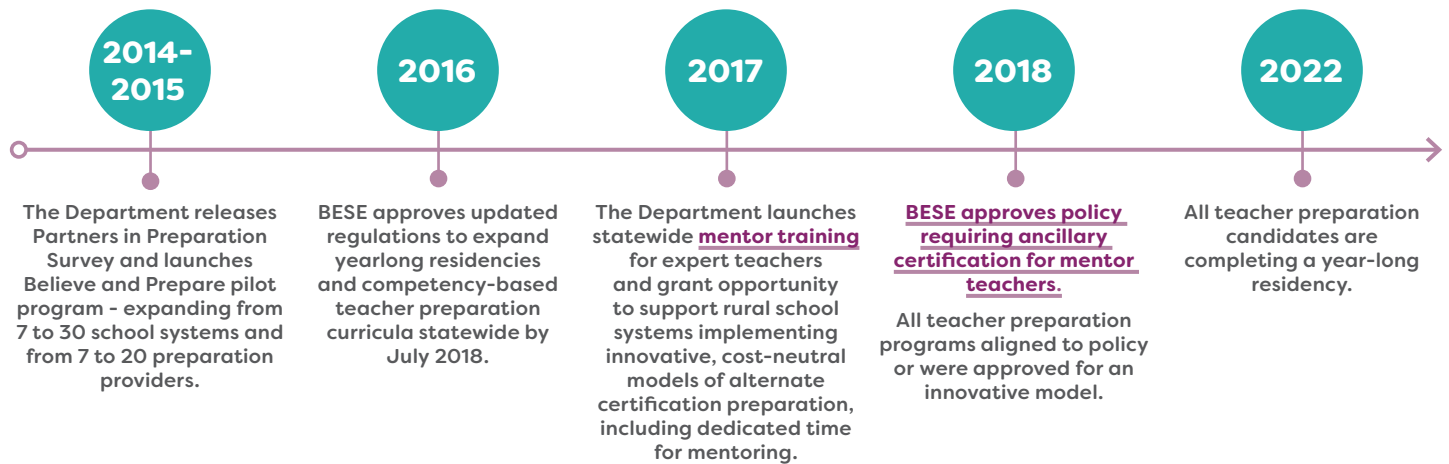
# Believe & PREPARE

PREPARING LOUISIANA'S NEXT GENERATION EDUCATORS

## WHAT IS BELIEVE AND PREPARE?

In line with leading nations' approaches to teacher preparation, the Department launched the **nationally recognized Believe and Prepare** pilot program in 2014. Believe and Prepare programs offer aspiring teachers a full year of practice under an expert mentor and a competency-based curriculum.

In October 2016, the Board of Elementary and Secondary Education (BESE), with support from the Board of Regents (BoR), adopted landmark regulations to **expand these practices** statewide. As of July 2018, all teacher preparation programs must include a yearlong residency alongside an expert mentor, and all preparation programs must include a **competency-based design**.



## WHAT SUCCESS HAS BELIEVE AND PREPARE HAD IN LOUISIANA & NATIONALLY?

### In the News

- **BESE Expands Full Year Classroom Residency for Teachers** (*Louisiana Believes*)
- **Louisiana Establishes Credentials for Teacher Leadership Roles** (*Louisiana Believes*)
- **This State is Reimagining How to Mentor Teachers in Alternative-Certification Programs** (*Education Week*)
- **Letters: Residencies for teachers good idea** (*The Advocate*)

Since the inception of Believe and prepare **over 1,200** aspiring teachers have benefited from participating in yearlong residencies. Since 2016 **over 1,600** teachers have been trained to serve as mentor teachers. **99%** of school systems have trained mentors.

## WHAT'S NEXT FOR BELIEVE AND PREPARE?

Louisiana will continue to grow the cadre of paid, trained mentor teachers. The Department will also focus on expanding the number of approved providers offering mentor teacher training.

**WHO TO CONTACT?**  
BELIEVEANDPREPARE  
@LA.GOV  
OR VISIT OUR  
WEBSITE