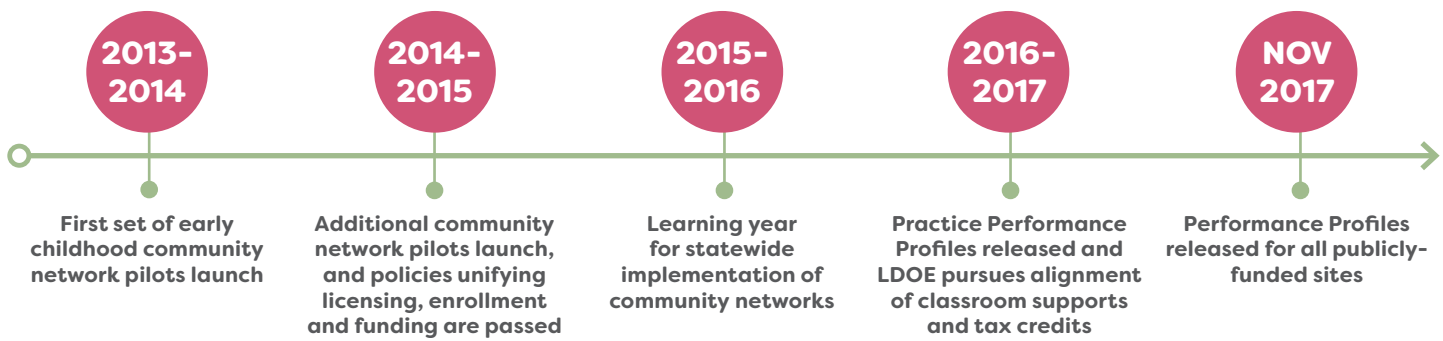




## WHAT IS THE EARLY CHILDHOOD INITIATIVE AT THE LOUISIANA DEPARTMENT OF EDUCATION?

Louisiana is in a multi-year effort to unify its early childhood system and improve kindergarten readiness. To address a fragmented early childhood system, Louisiana's legislature passed the Early Childhood Care and Education Act of 2012. This legislation seeks to have all children in publicly-funded birth to age five programs on track for success in school.

The Board of Elementary and Secondary Education (BESE) is charged with unifying publicly funded preschool, Head Start and child care programs into a statewide early childhood network and to empower families by ensuring easy access to high-quality early learning options for their children.



## WHAT'S SUCCESS HAS THE EARLY CHILDHOOD INITIATIVE HAD IN LOUISIANA & NATIONALLY?

- 1. An Early Childhood Network in Every Community**
  - Every parish has established an early childhood network that includes all publicly-funded child care, Head Start and Pre-K sites.
  - Networks account for every at-risk child, complete classroom observations and support enrollment.
- 2. Unified Rating System Connected to Licensure**
  - Every site receives a Performance Profile rating based on classroom observations.
- 3. Coordinated Enrollment and Funding to Empower Family Choice**
  - Networks are building local enrollment systems that match families with the best option in their community.
- 4. Teacher Preparation and Support**
  - The Department has established expectations for aligned preparation and training that supports high-quality teacher-child interactions.

## WHAT'S NEXT FOR THE EARLY CHILDHOOD INITIATIVE?

In 2017-2018, the Department will:

- Issue a Performance Profile for every publicly-funded early childhood site for the first time ever through the new School or Center Finder Website.
- Provide targeted assistance to community networks as they build local coordinated enrollment systems, which support families in identifying the best program for their child.
- Support improved teacher-child interactions for all program types through increasing access to Tier I curriculum, quality training and coaching, and opportunities for teacher preparation.

