

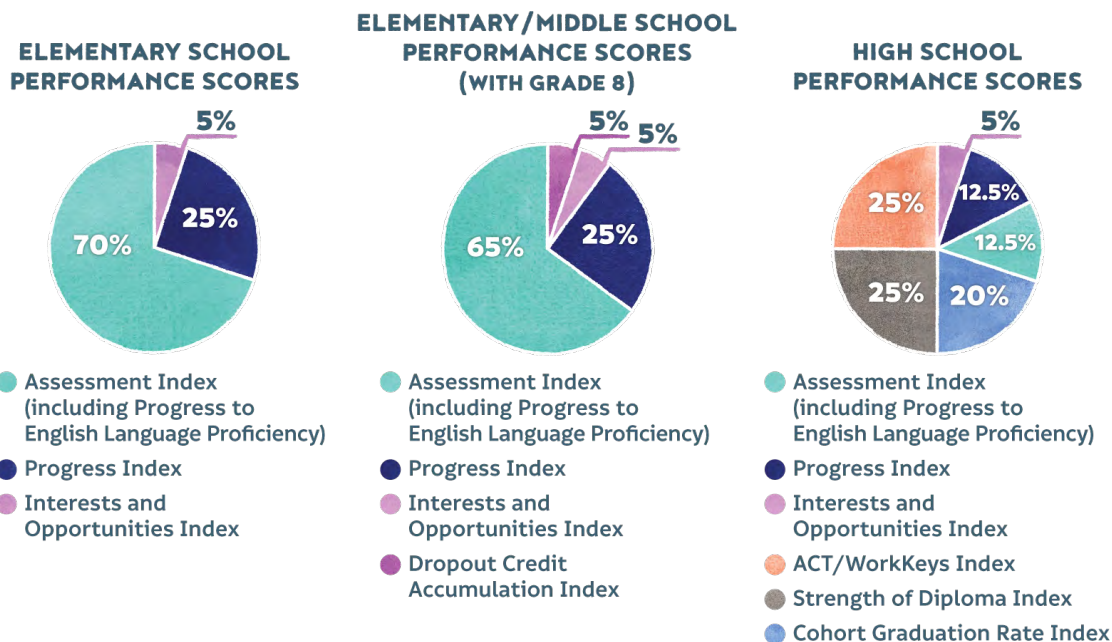
2021-2022 INTERESTS & OPPORTUNITIES

PURPOSE

Louisiana's ESSA plan proposed an Interest and Opportunities indicator to measure whether schools are providing students with access to well-rounded education that exposes them to diverse areas of learning in which they can develop their skills and talents.

SCHOOL PERFORMANCE SCORE FORMULAE

Louisiana utilizes the following formulae when evaluating school performance:



POLICY FOR SY 2020-2021

At its August 2021 meeting, BESE approved continuing the five percent Interests and Opportunities measure for the 2021-2022 school year outlined below.

COMPONENT	GRADE LEVELS
Completion of an online survey <ul style="list-style-type: none"> Completed by principals, validated by superintendents Survey items include questions to collect feedback about the menu-based approach. For the 2021-2022 School year, these items are asked for informational purposes only and specific responses will not be scored 	All
Course enrollment in Physical Education, Visual Arts, Performing Arts, and World Languages	K-8 Only

HOW INTERESTS AND OPPORTUNITIES WILL BE SCORED IN 2021-2022

A maximum of 150 index points may be earned under Interests and Opportunities Index. The formula used depends on a school's configuration, as follows:

- Elementary/Middle Schools:** In the 2021-2022 school year, the Interests and Opportunities index for K-8 schools will be based on equal parts on survey completion and course enrollment.
 - Full completion of the survey will result in 75 points for grades K-8. Failure to complete the survey will result in 0 points.
 - A maximum of 75 points may be earned for course enrollment. Course enrollment is defined as the percent of grade K-8 students enrolled in physical education courses, visual arts courses, performing arts courses, and of grade 4-8 students enrolled in world language courses. Additional points towards the score can be earned for students in grades K-3 enrolled in world language courses. The Department published a list of course codes for each category and it is available in the Accountability Library.

- **High Schools:** The 2021-2022 Interests and Opportunities index for high schools will be based solely on survey completion. High Schools that fully complete the survey will earn 150 points. Failure to complete the survey will result in 0 points.
- **Combination Schools:** The 2021-2022 Interests and Opportunities index for combination schools will be calculated using the above formulae for Elementary/Middle and High Schools. A K-8 index will be calculated using all the students in grades K-8 at the site, and a high school index will be calculated using all the students in grades 9-12 at the site. To get the school's overall Interests and Opportunities Index, these two index scores are then averaged using a weighting formula.

POLICY FOR SY 2022-2023 AND BEYOND

At its August 2021 meeting, BESE approved an updated five percent Interests and Opportunities measure for the 2022-2023 school year outlined below. This process is for all sites K-12.

MENU-BASED APPROACH
Schools will have a menu of options available to choose on what they want to be evaluated. The menu will include indicators from four domains: The Arts, Extracurricular, STEM, and World Languages. Schools will select four indicators from at least two domains and system superintendents will validate their selections. Schools will then have time to submit any necessary documentation for evaluation. LDOE will follow a data certification process to evaluate indicators and collect documentation.

Survey results and data analysis will inform the development of the measure for 2022-2023 and beyond.

For additional information, please contact accountability@la.gov.