

School COVID-19 Screening Decision Tree:

Responding to a Symptomatic Individual – 8.04.2021



Experiencing COVID-like symptoms

Go Home / Stay in School Isolation Room Until Guardian Picks Up Student

Student or staff member **must do one of the following:**

Get a COVID-19 Test

Get Evaluated by Healthcare Provider

OR

**If no test result or healthcare provider evaluation has been confirmed, should complete end of isolation criteria. If neither is confirmed within 48 hrs of symptom onset, close contacts should quarantine.*

*PCR/molecular test confirmation **required** if antigen test is negative for a symptomatic individual.*

(+) Positive Test

(-) Negative Test

Advises to get a COVID-19 Test

Gives Alternate Diagnosis AND Determines COVID-19 Test is Not Indicated

ISOLATE & Stay Home Until

- Fever free with no medications for 24 hours, AND
- Symptoms improve, AND
- 10 days since EITHER 1st symptom appeared OR date positive test administered (whichever comes first) AND
- Notify close contacts

Stay Home Until

- Symptoms improve, AND
- Fever free with no meds for 24 hours

Return to School with Documentation Per School Policy

COVID-19 symptoms include but are not limited to:

- Fever ≥ 100.4 °F
- Shortness of breath
- Chest pain
- Increasingly nonproductive (dry) cough
- Body aches or fatigue
- GI symptoms (nausea, diarrhea)
- Loss of taste and/or smell
- Other flu or cold like symptoms such as headache, sore throat, or congestion

Reference LDH Website for Specifics on Suspect Cases & Contact Tracing: [COVID-19 Contact Tracing in Schools](#)

Children's Hospital New Orleans Hotline for School Wellness & Virtual Care → 504.837.7760

In case of an emergency, dial 911.

This chart follows the most up-to-date CDC & LDH recommendations. Download a copy at: <https://www.chnola.org/community/thrivekids-student-wellness/covid-19-support/school-covid-19-decision-tree/>

School COVID-19 Screening Decision Tree:

Responding to Close Contact – 8.04.2021



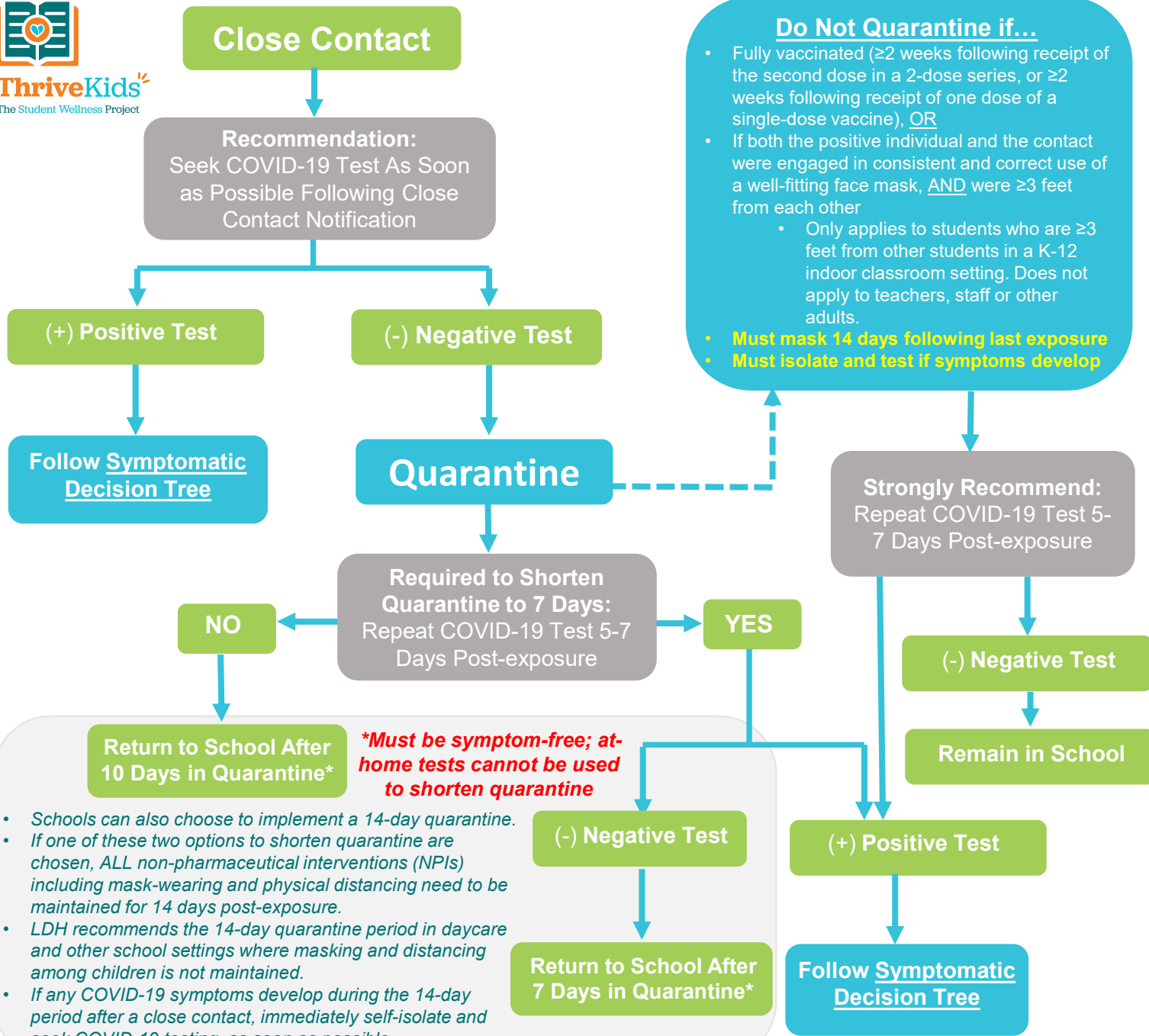
Children's Hospital
New Orleans
LCMC Health



LOUISIANA
DEPARTMENT OF
HEALTH
Public Health



ThriveKids
The Student Wellness Project



Do Not Quarantine if...

- Fully vaccinated (≥2 weeks following receipt of the second dose in a 2-dose series, or ≥2 weeks following receipt of one dose of a single-dose vaccine), OR
- If both the positive individual and the contact were engaged in consistent and correct use of a well-fitting face mask, AND were ≥3 feet from each other
 - Only applies to students who are ≥3 feet from other students in a K-12 indoor classroom setting. Does not apply to teachers, staff or other adults.

Must mask 14 days following last exposure
Must isolate and test if symptoms develop

CLOSE CONTACT =

- Within 6 feet of a COVID-19 infected person, for a **cumulative total of 15 minutes or more over a 24-hour period**;
- The infectious period for identifying close contacts include the 48 hours before the day the person became sick (or the 48 hours before specimen collection if asymptomatic) until the person was isolated.

Reference LDH Website for Specifics on Suspect Cases & Contact Tracing:
[COVID-19 Contact Tracing in Schools](#)

Reference CDC Website for Correct Usage of Face Mask:
www.cdc.gov/coronavirus/2019-ncov/your-health/effective-masks

Children's Hospital New Orleans Hotline for School Wellness & Virtual Care → 504.837.7760

In case of an emergency, dial 911.

Return to School After 10 Days in Quarantine*

- Schools can also choose to implement a 14-day quarantine.
- If one of these two options to shorten quarantine are chosen, ALL non-pharmaceutical interventions (NPIs) including mask-wearing and physical distancing need to be maintained for 14 days post-exposure.
- LDH recommends the 14-day quarantine period in daycare and other school settings where masking and distancing among children is not maintained.
- If any COVID-19 symptoms develop during the 14-day period after a close contact, immediately self-isolate and seek COVID-19 testing, as soon as possible.

This chart follows the most up-to-date CDC & LDH recommendations. Download a copy at:
<https://www.chnola.org/community/thrivekids-student-wellness/covid-19-support/school-covid-19-decision-tree/>