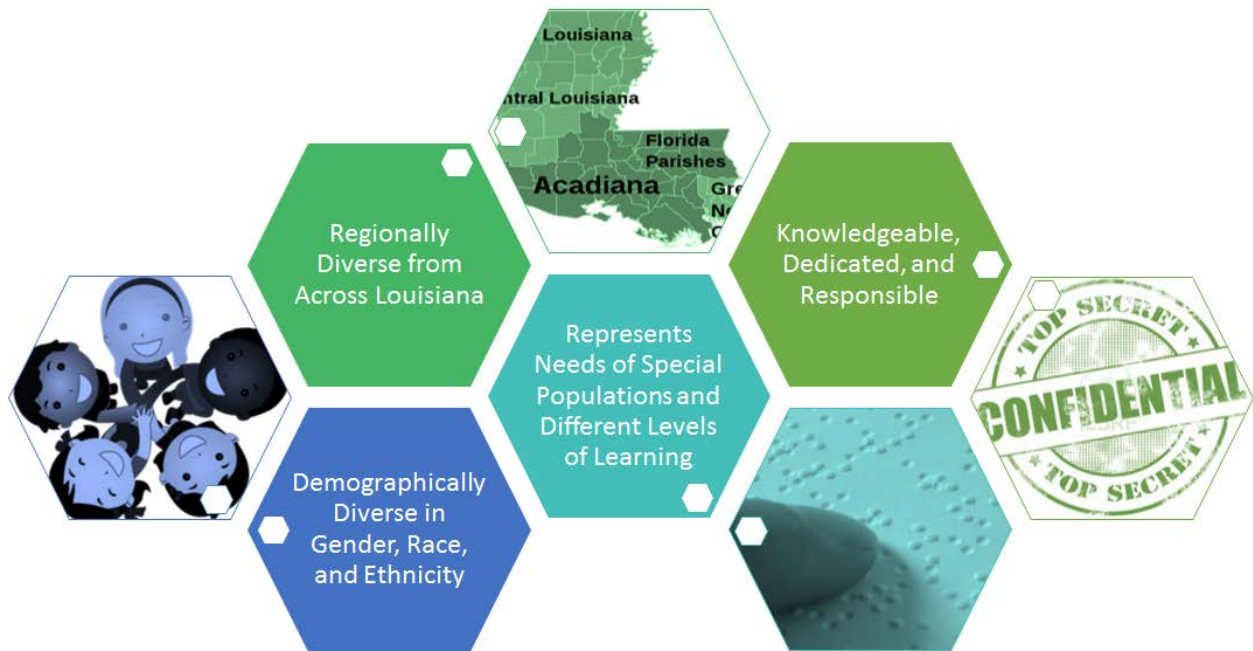


The development and implementation of Louisiana statewide standardized assessments relies on the active involvement of thousands of Louisiana educators serving on numerous committees. All Louisiana statewide assessment items have been reviewed and accepted by committees of Louisiana educators. The committees are comprised of educators from different parts of Louisiana, who represent all Louisiana students (e.g., special education, English Language Learners, students with disabilities, etc.). Committee members should be representative of the diverse demographics of the state.

**Updated 4/18/18:  
Interest Survey Closing  
Dates Extended**



**Participant Travel and Stipend**

The contracted vendor provides lodging for participants who need to travel over 60 miles, breakfast and lunch for all participants, and a daily stipend for each participant who is a 9-10 month employee and on summer break. Additionally, the vendor reimburses mileage costs for all participants and substitute teacher costs for committees run during the school year.

**Interest Survey**

This document includes links to various interest surveys used by the assessment development staff to recruit for committees. All applicants are considered, but selection is not guaranteed. Assessment development staff will select both participants and alternates to ensure committee needs are met. Links to interest surveys will be added and removed as committees are planned and convened. To go directly to interest survey tables, select any of the committee titles listed below.

[Passage Review](#)

[Item Content & Bias Review](#)

[Data Review](#)

[Source Review](#)

[Item Alignment Review](#)

[Standard Setting](#)

[Stimuli Review](#)

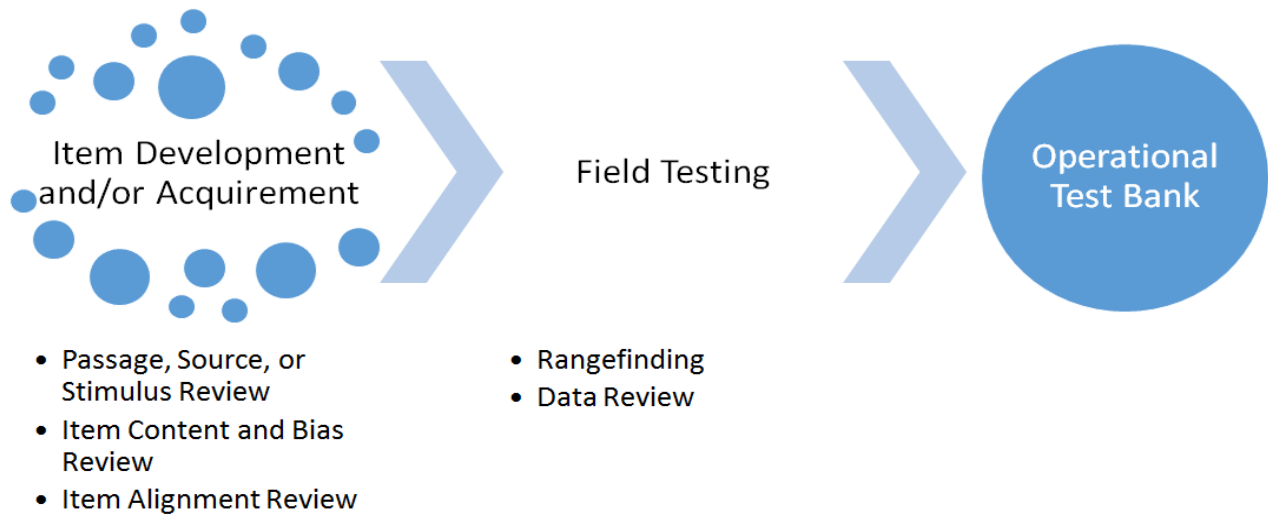
[Range-finding](#)

[Future Committees](#)

### Superintendent Approval

Assessment development staff will mail and email approval forms to superintendents on the dates listed in each table of the following sections. Applicants will not be informed of selection as a participant or alternate unless superintendent approval is secured. The approval forms should be returned via fax or email on or before the date indicated on the form, also shown in the following tables.

The graphic below illustrates the general assessment development process and the educator review committees associated with each step.



### Passage Review

The English Language Arts (ELA) Passage Review Committee is composed of 6-8 Louisiana educators, primarily classroom and specialized teachers with extensive content knowledge. During the review process, the committee, representing a variety of perspectives, will review literary and informational passages to ensure the texts that will be used to develop passage sets on the LEAP 2025 English Language Arts (ELA) tests are fair and appropriate for all students and will allow an opportunity for students to demonstrate their knowledge and skills in ELA.

This year's passage review is combined with the item alignment review committee. See [Item Alignment Review](#) for more information.

### Source Review

The Social Studies Source Review Committee is composed of 6-8 Louisiana educators, primarily classroom and specialized teachers with extensive content knowledge. During the review process, the committee, representing a variety of perspectives, will review primary and secondary sources to ensure the materials that will be used to develop item and task sets on the LEAP 2025 Social Studies tests are fair and appropriate for all students and will allow an opportunity for students to demonstrate their knowledge and skills in social studies.

**Stimuli Review**

The Science Stimuli Review Committee is composed of 6-8 Louisiana educators, primarily classroom and specialized teachers with extensive content knowledge. During the review process, the committee, representing a variety of perspectives, will review stimuli to ensure the materials that will be used to develop item and task sets on the LEAP 2025 Science tests are fair and appropriate for all students and will allow an opportunity for students to demonstrate their knowledge and skills in science.

**Item Content and Bias Review**

The Item Content and Bias Review Committee is composed of 8-10 Louisiana educators, ranging from classroom and specialized teachers to district supervisors. The committee reviews newly developed test items that will be field tested in future administrations of the LEAP 2025 assessments. During the review process, the committee will verify alignment of each item to the Louisiana Student Standards, provide feedback regarding potential bias and sensitivity issues, and make recommendations to accept, accept with edits, or reject each item.

Content with Survey Link	Meeting Dates	Survey Closes	Superintendent Approval Sent	Superintendent Approval Due
<a href="#">Social Studies Gr. 3 &amp; 6</a>	June 6	<b>April 25</b>	<b>April 30</b>	<b>May 11</b>
<a href="#">Social Studies Gr. 4 &amp; 7</a>	June 7			
<a href="#">Social Studies Gr. 5 &amp; 8</a>	June 8			
<a href="#">Science Grades 3 &amp; 6</a>	June 12			
<a href="#">US History</a>	June 13 - 14			
<a href="#">Science Grades 4 &amp; 7</a>	June 13			
<a href="#">Science Grades 5 &amp; 8</a>	June 14			
<a href="#">Biology</a>	June 15	<b>April 25</b>	April 30	May 11
<a href="#">Math Grades 3-5</a>	June 25 - 26			
<a href="#">Math Grades 6-8</a>	June 26 - 27			
<a href="#">Algebra I &amp; Geometry</a>	June 28			

**Deadline Extended!**

**Deadline Extended!**

### Item Alignment Review

The Item Alignment Review Committee is composed of 8-10 Louisiana educators, ranging from classroom and specialized teachers to district supervisors. The committee reviews an acquired bank of operational test items that have been field tested and reviewed for quality and appropriateness by other educators across the country. During the review process, the committee will verify alignment of each item to the Louisiana Student Standards for English Language Arts (ELA) or Mathematics, provide feedback regarding potential bias and sensitivity issues, and make recommendations to accept or reject each item for future administrations of the LEAP 2025 assessments.

Content with Survey Link	Meeting Dates	Survey Closes	Superintendent Approval Sent	Superintendent Approval Due
<a href="#">ELA 3-HS (&amp; Passage Review)</a>	June 11 - 15	April 25	April 30	May 11
<a href="#">Math 3-HS</a>	June 12 - 14			

**Deadline Extended!**

### Rangefinding

A Rangefinding Committee is comprised of 4-5 grade-level content experts, usually classroom teachers. The committee scores a representative sample of open-ended student responses from the field test using an item-specific rubric or scoring notes and makes revisions to the rubrics and scoring notes as necessary. The scoring decisions made by the committee will be applied to all operational scoring of the item.

Content with Survey Link	Meeting Dates	Survey Closes	Superintendent Approval Sent	Superintendent Approval Due
<a href="#">Biology</a>	May 21 - 25	April 20	April 23	May 4
<a href="#">US History</a>	May 23 - 25			
<a href="#">Algebra I &amp; Geometry</a>	June 4 - 8			
<a href="#">Social Studies Grades 6-8</a>	June 18 - 20	April 25	April 30	May 11
<a href="#">Science Grades 3 &amp; 6</a>	June 18 - 22			
<a href="#">Math Grades 3-8</a>	June 18 - 22			
<a href="#">Science Grades 4, 5, 7, &amp; 8</a>	June 25 - 29			

**Deadline Extended!**

### Data Review

Field-tested items undergo data review. Committee members who have participated in previous item reviews are asked to return because of their familiarity with the items and to maintain security. The committee is given an overview of how to read item statistics, including item difficulty and bias. If there is a flag for any of the values, the committee analyzes the item to determine if the item is flawed. Gaps in subgroup performances are taken into consideration and analyzed. The committee may vote to reject, revise and re-field test, or accept items to go in the operational item bank.

Content with Survey Link	Meeting Dates	Survey Closes	Superintendent Approval Sent	Superintendent Approval Due
<a href="#">ELA 3-8, English I, &amp; English II</a>	July 11 - 13	May 4	May 14	May 25
<a href="#">Math 3-8, Algebra I, &amp; Geometry</a>	July 11 - 13			
<a href="#">Biology</a>	July 31 – Aug. 2			
<a href="#">Science Grades 3 &amp; 6</a>	Sept. 13 - 14	June 29	July 16	July 27
<a href="#">Science Grades 4 &amp; 7</a>	Sept. 17 - 18			
<a href="#">Science Grades 5 &amp; 8</a>	Sept. 19 - 20			

### Standard Setting

As a new test enters the LEAP 2025 assessment system, a Standard Setting Committee is convened to determine cut scores for each achievement level. The participants may include, but are not limited to, teachers, administrators, district curriculum coordinators, parents, and other educational stakeholders. This committee is also tasked with making recommendations to the drafted Achievement Level Descriptors. The proposed achievement levels are presented to BESE for adoption into policy.

Content with Survey Link	Meeting Dates	Survey Closes	Superintendent Approval Sent	Superintendent Approval Due
<a href="#">US History</a>	July 9-10	May 4	May 14	May 25

### Future Committees

Additional committees to convene in 2018-2019, specific dates to be determined:

- ELA 3-HS Item Content and Bias Review (October 2018)
- Math 3-HS Data Review for constructed-response items (September 2018)
- Social Studies Source Review (January 2019)
- Science Stimuli Review (January 2019)