

Early Childhood Updates

12.18.2020

The background of the slide is a watercolor-style wash of colors, primarily in shades of teal, blue, and light green. A large, thin white circle is centered on the left side of the slide, partially overlapping the watercolor background. The word "Agenda" is written in a simple, black, sans-serif font inside this circle.

Agenda

- **Welcome from Dr. Brumley and Dr. Chiasson**
- **COVID-19 Resources for Early Childhood**
- **BinaxNOW Rapid Testing**
- **COVID-19 Vaccine Update**
- **Business Tax Considerations**
- **Program Updates**
- **Food and Nutrition Updates**
- **Teaching and Learning Updates**

COVID-19 Resources for Early Childhood

The Department has prepared resources and materials to support lead agencies, schools, and child care providers during this uncertain time.

COVID-19 Resources:

- LDOE COVID-19 [landing page](#) and [library](#)
- LDOE Strong Start 2020 [landing page](#) and [library](#)
- **COVID-19 [FAQ](#) for early childhood - UPDATED**
- [Office of Public Health Guidelines for Child Care](#)
- Questions regarding COVID-19, contact LDOECOVID19Support@la.gov



Holiday Poll

BinaxNOW Rapid Testing for Child Care

BinaxNOW Survey

The Louisiana Department of Health (LDH) has **BinaxNOW Rapid Testing kits** available upon request for school systems and child care to access when a CLIA Waived Certificate Number or community health provider has been identified. In order to access these test kits, school systems and child care will need a designated point of contact to complete a survey.

Please note that the **survey completion date has been extended** and school systems and child care that would like to request BinaxNOW Rapid Testing kits are encouraged to [complete this survey](#) by **the end of December**. Requests for surveys will be submitted to LDH on a weekly basis.

For school systems and child care that wish to participate and need a community health partnership, please reach out to Arundhati.Bakshi@la.gov at LDH.

Abbott BinaxNOW Rapid Testing

- Federal resource provided at no charge
- Great when you need to know quickly if someone might be positive
- **Rapid results, inexpensive**, no electronic instruments needed
 - But not as sensitive or specific as PCR (molecular test)
- Not specifically recommended for asymptomatic cases
- Comes with free, optional NAVICA app to records result + date of test for patient
 - **Training:** Available through our Abbott reps
 - **Reporting:** Electronic reporting of all test results required (more info thru ELR@LA.gov)
 - **CLIA:** FDA requires facility administering the test have CLIA certificate of waiver



BinaxNOW Resources

The department has created a set of documents to aid school systems and child care in using the BinaxNOW Rapid Tests. These documents include the following:

1. LDOE BinaxNOW FAQ document:
 - This [document](#) covers the operational questions related to school systems and child care use of BinaxNOW Rapid test.
1. LDH BinaxNOW Rapid Test Information:
 - This [one page document](#) covers the medical use of BinaxNOW Rapid test, along with information from the manufacturer.

For reporting questions, please contact ELR@la.gov or schoolcovidreporting@la.gov

COVID-19 Updates

COVID-19 Updates

COVID-19 Vaccine

The LDH has provided a variety of information regarding the COVID-19 Vaccine. Child care is in Priority 2 of the vaccine distribution.

[COVID-19 Vaccine FAQ](#)

[COVID-19 Vaccine - What You Need to Know](#)

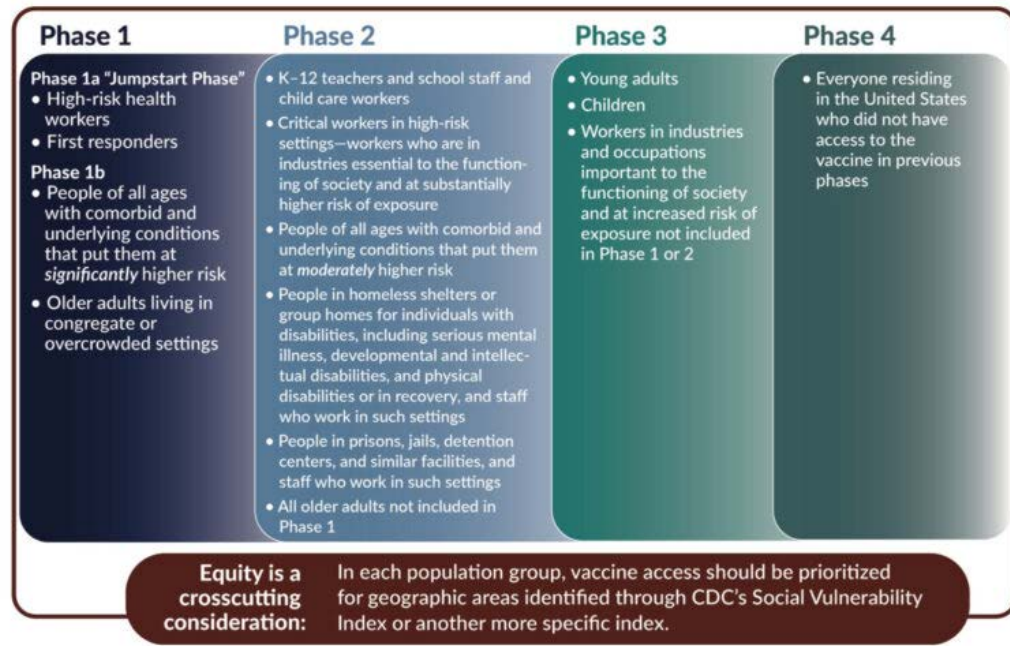
Social Media Campaign from LDH:

- Phase 1A: [Facebook](#); [Instagram](#); [Twitter](#)
- Safe and Effective: [Facebook](#); [Instagram](#); [Twitter](#)
- How It Works: [Facebook](#); [Instagram](#); [Twitter](#)
- Light at the End of the Tunnel: [Facebook](#); [Instagram](#); [Twitter](#)

COVID-19 Updates

COVID-19 Vaccine

Child care is in Priority 2 of the vaccine distribution per the LDH. Superintendent Brumley has requested that 166,000 vaccines be prioritized for B-Grade 12 staff and teachers.



COVID-19 Updates

Update on Quarantine Guidelines

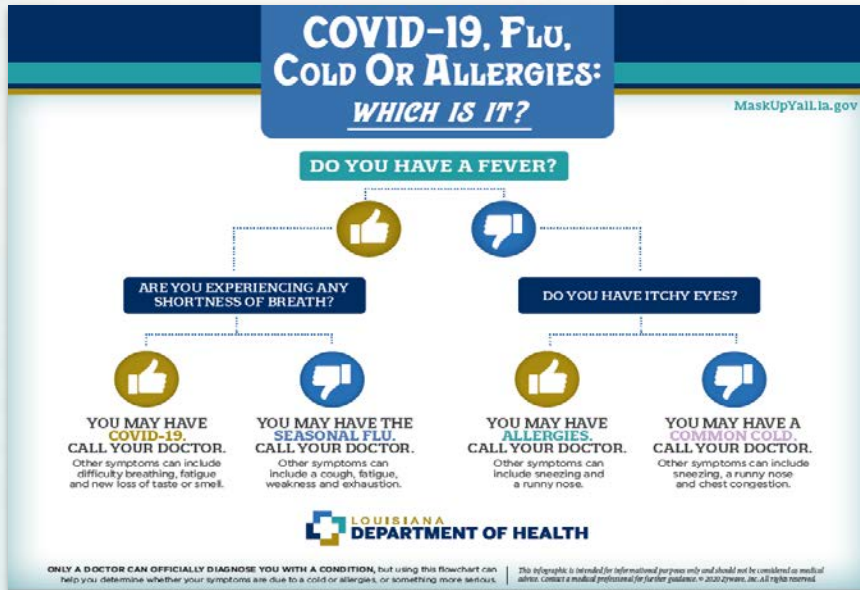
The Louisiana Department of Health has adopted the Centers for Disease Control and Prevention's (CDC) recently updated guidance that allows people who may have been exposed to COVID-19 to shorten their quarantine period from 14 days to 10 days, or as few as 7 days with a negative test. The Louisiana Department of Education is working with the Louisiana Department of Health and other medical professionals to update guidance. If there is any further clarification on this, we will inform providers.

For additional information, visit the [Louisiana Department of Health](#) and the [Centers for Disease Control and Prevention](#) websites. You can also email LDOECOVID19Support@la.gov.

COVID-19 Updates

COVID-19, Flu, Cold or Allergies Flow Chart

The Louisiana Department of Health has developed a flowchart to help determine whether symptoms of illness are due to a cold or allergies or something more serious.



This [document](#) can be downloaded from the [Louisiana Department of Health](#) website.

COVID-19 Updates

Mask Up for Louisiana

MASK UP FOR LOUISIANA

HOW TO SELECT A MASK

Do Choose

- Have two or more layers of washable, breathable fabric
- Completely cover your nose and mouth
- Fit snugly against the sides of your face and don't have gaps

Do NOT choose

- Are made of fabric that makes it hard to breathe, for example, vinyl
- Have exhalation valves or vents, which allow virus particles to escape
- Are intended for healthcare workers, including N95 respirators or surgical masks

Special Situations

- Glasses:** If you wear glasses, find a mask that fits closely over your nose or one that has a nose wire to limit fogging
- Children:** If you are able, find a mask that is made for children
- Children:** If you can't find a mask made for children, check to be sure the mask fits snugly over the nose and mouth and under the chin
- Children:** Do not put on children younger than 2 years old

Caution

- Gaiters:** Evaluation is on-going but effectiveness is unknown at this time
- Face Shields:** Evaluation is on-going but effectiveness is unknown at this time

LOUISIANA DEPARTMENT OF HEALTH | CDC

MaskUpYall.la.gov

HOW TO WEAR A MASK

Wear a mask correctly and consistently for the best protection. Be sure to wash your hands before putting on a mask and remember NOT to touch the mask when wearing it.

Do Wear a Mask that

- Covers your nose and mouth and secure it under your chin
- Fits snugly against the sides of your face

Do NOT Wear a Mask

- Around your neck
- On your forehead
- Under your nose
- Only on your nose
- On your chin
- Dangling from one ear
- On your arm

HOW TO TAKE OFF A MASK

- Carefully, untie the strings behind your head or stretch the ear loops
- Handle only by the ear loops or ties
- Fold outside corners together
- Be careful not to touch your eyes, nose, and mouth when removing and wash hands immediately after removing

HOW TO CLEAN A MASK

Masks should be washed regularly. Always remove masks correctly and wash your hands after handling or touching a used mask.

- Include your mask with your regular laundry
- Use regular laundry detergent and the warmest appropriate water setting for the cloth used to make the mask
- Use the highest heat setting and leave in the dryer until completely dry

MaskUpYall.la.gov | LOUISIANA DEPARTMENT OF HEALTH | CDC

The Louisiana Department of Health has created an infographic flyer titled “[Mask Up for Louisiana](#)” that includes information related to selecting, wearing, removing and cleaning masks. This flyer can be downloaded from the [Louisiana Department of Health](#) website.

Child Care - Business Tax Considerations

Business Tax Considerations Update

Alan Young from the Child Care Association of Louisiana will speak about tax considerations.

COVID-19-Related Tax Credits for Required Paid Leave

Reducing Tax Liability

- Resource and Referral Agency Donation
- Goods and Services
- Utilities
- Rental Expenses
- Long Term Liabilities

LaCAP Grants - are taxable

Program Updates

Program Updates

Child Care Assistance Program (CCAP)

The Department will extend CCAP payments to providers based on enrollment through March 31, 2021.

While CCAP has extended payments based on enrollment until March 31, providers **are still required** to use either the Tracking of Time Services (TOTS) Point of Service (POS) device or Interactive Voice Response (IVR) system to **track attendance**.

Failure to do so may jeopardize provider payments based on enrollment.

Program Updates

Child Care Assistance Program (CCAP)

The Department has added an eligibility criteria for CCAP in an effort to offer child care while families are searching for work or enrolling in school.

- Per BESE Bulletin 139, if the head of household or any legal custodian is actively seeking employment and/or training (E&T), including enrolling in school, the E&T requirements may be waived for 90 days.
- The household must meet certification requirements and validate that they are actively seeking employment with the [Louisiana Workforce Commission](#).
- If eligible, the family may qualify for CCAP for up to 90 days while they are looking for work and/or enrolling in school.

Program Updates

Child Care Criminal Background Check (CCCBC)

Prior to sending a potential staff to obtain fingerprints, center staff should keep in mind the following:

- Of the 30 fingerprint locations across the State, 5 are closed due to COVID.
- Some locations may close unexpectedly due to potential COVID exposure.
- It is best to call the nearest location in advance to ensure the location is open. If the location is closed, use the [Fingerprint Location](#) list to find the nearest alternative location.
- Department fees will continue to be waived through June 30.
- The Department is working with the fingerprint vendor and State Police to offer more locations in 2021.

Food and Nutrition Update

Food and Nutrition Updates

Child and Adult Care Food Program

Providers may consider applying for the Child and Adult Care Food Program (CACFP) in an effort to assist with food costs (2 meals and 1 snack or 2 snacks and 1 meal).

Type II or III Early Learning Centers -For-Profit or Non-Profit - Note: For-Profit organizations qualify if 25% or more of enrolled children are eligible for Free or Reduced Meal Pricing.

Family Day Care Home Food Program- Family home childcare for up to 6 children under the age of 13. Can include resident children if non-resident children also participate in the family home.

All programs are reimbursement programs. Organizations are reimbursed on a per-meal-served basis depending on the qualifications of the child. Funding is designed to be used to provide healthier meals to enrolled children and some of the reimbursement may be used to support the meal service (equipment, labor, etc.)

Contact the LDOE-Division of Nutrition Support at (225) 342-3707 or 877-453-2721 to see if you qualify.

Food and Nutrition Updates

The Feeding Louisiana Network

Food insecurity is a major issue for some families. The Department is working with Feeding Louisiana to help address this need.

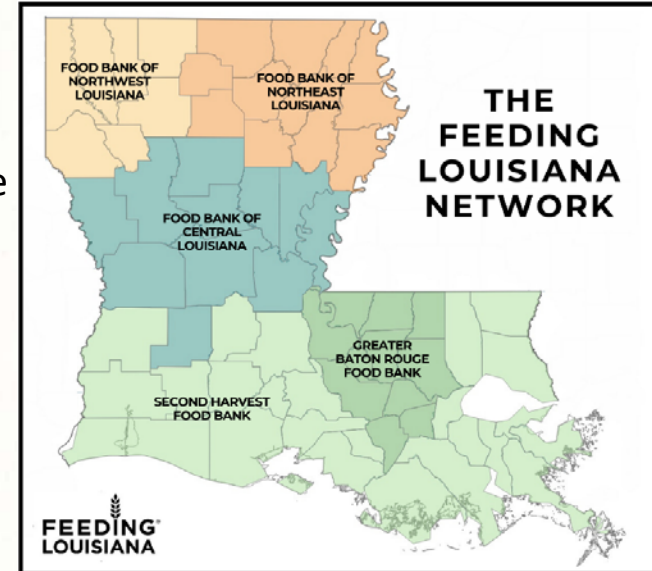
Second Harvest Food Bank - New Orleans - 504-729-2849; Lafayette & Lake Charles - 337-408-2468

Food Bank Northeast Louisiana - Monroe - 318-322-3567

Greater Baton Rouge Food Bank - Baton Rouge - 225-359-9940

Food Bank of Northwest Louisiana - Shreveport - 318-675-2400 X 100

Food Bank of Central Louisiana - Alexandria - 318-445-2773 X 203



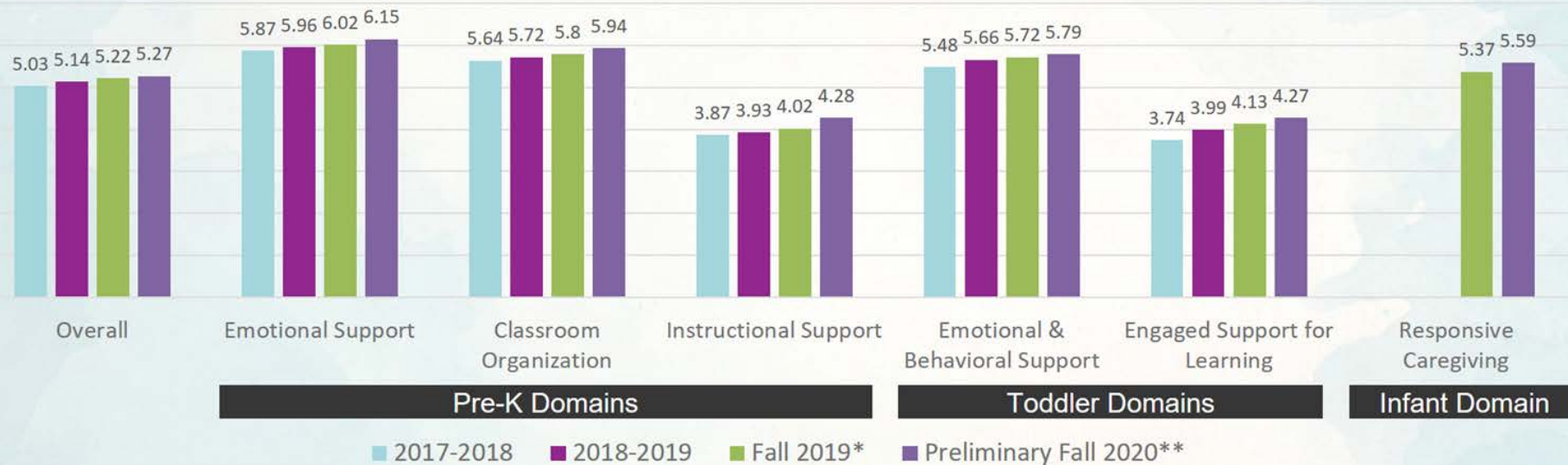
Visit www.feedinglouisiana.org/get-help to find a nearby food bank.

Teaching and Learning Updates

Teaching and Learning Updates

Preliminary Improvement on CLASS

Based on the 3,327 local and 750 third party observations that had occurred by December 1, the statewide average overall score and the average score on each domain has improved since previous years.



* Because Spring 2020 observations were halted, the domain level averages from Fall 2019 are used to show year-to-year comparisons.

** Preliminary Fall 2020 results are calculated based on observations conducted this fall prior to December 1, 2020.

Teaching and Learning Updates

Supporting Improvement

In spite of ongoing challenges related to COVID-19, child care providers and teachers across the state continue to take advantage of supports and resources to improve quality.

- **Site Improvement Planning:** A total of 52 sites that were considered low-performing based on their 2019-2020 results are participating in site improvement planning.
- **Child Care Resource & Referral Agencies:** CCR&Rs have continued to serve centers during the COVID-19 pandemic in the ways the center felt most comfortable - supports took place as virtual visits (24%), phone conferences (31%), and in-person assistance (45%).
 - In 2020, CCR&Rs provided 4,115 hours of technical assistance and 6,334 hours of coaching.
 - This school year alone, there have been 626 group trainings statewide with an average of 13 participants at each 2 hour training.
- **Early Childhood Ancillary Certificate:** Despite ongoing challenges, early childhood educators continue to pursue their ECAC credential this year, and support has been provided via Pathways scholarships.
 - In the last year, 846 ECACs have been issued, and 1,004 scholarships for the ECAC were provided by Pathways (for program completion in 2021).

Teaching and Learning Updates

Expanded Mental Health Consultation

The Department has partnered with Tulane Mental Health to expand services to provide child care providers, children, families, and caregivers with trauma-related supports due to COVID-19.

The Department's partnership with Tulane to expand its mental health consultation services to provide additional trauma-related supports has resulted in the following supports to the field from July 2020 to present:

- 214 Centers Served
- 701 Center Physical Visits
- 445 Virtual Center Visits
- 38 Family Child Care Calls
- 149 Family Child Care Physical and Virtual Visits
- 62 Child Referrals
- 446 Teachers Trained
- 75 Child-Centered Consults and Referrals

Teaching and Learning Updates

Update to Observations and Coaching Visits

Due to the recent shift back to Phase II and the increased risk of community spread in all parishes in the state, the Department has paused all in-person observations and coaching visits for the remainder of the semester.

- Out of an abundance of caution, beginning Monday, December 7, the Department paused any remaining in-person observations and coaching visits conducted by external observers and coaches this fall semester.
- Wherever possible, lead agencies, the ULL Picard Center, and CCR&Rs worked with sites to conduct scheduled observations and coaching visits virtually for the remainder of the semester.
- The Department will work with LDH to determine when it is appropriate to resume in-person observations and coaching visits.

Teaching and Learning Updates

Updates on Early Childhood Performance Ratings

The impacts of COVID-19 on the early childhood field have been significant, and the Department recognizes that flexibilities will need to be applied to the 2020-2021 Performance Profiles.

- BESE approved a one-time emergency rule at the December BESE meeting that would allow any classroom that received a fall score (after applicable third party replacement) of 4.50 or higher to be exempted from a spring local observation.
 - This may enable community network lead agencies to redirect efforts and funding to support low-performing classrooms.
 - While classrooms scoring 4.50 or higher could opt out of receiving a spring local observation, those classrooms still may receive a third party observation in spring.
- The Department is exploring options for calculating 2020-2021 Performance Ratings and Star Ratings that would provide sites with opportunities to demonstrate improvement from previous years, while not penalizing sites that have struggled to maintain the level of quality they have demonstrated in the past due to the circumstances.

Teaching and Learning Updates

Update to Eligibility for Staff School Readiness Tax Credits

*At the December BESE meeting, BESE approved a one-time emergency rule that will reduce the work requirement for SRTC eligibility from 6 months to **300 hours** for the 2020 tax year.*

- On March 16, the Governor closed schools statewide and they remained closed for in-person instruction for the rest of the semester.
 - Many early learning centers follow school closures in event of emergencies or severe weather. 70% of child care centers closed temporarily due to the pandemic, and 2% currently remain closed because of COVID-19.
 - 46% of child care providers laid off staff as a result of closures.
- The Department has received requests from a variety of stakeholders to explore a temporary adjustment to the work requirement given the broad extent of closures and layoffs.

Update to Bulletin 139: *Due to the COVID-19 pandemic, for the 2020 calendar year only, a center director or staff member will only have to verify that he/she has worked at the same early learning center for at least 300 hours in the calendar year in order to meet the work requirement in this Subsection.*

Teaching and Learning Updates

Early Childhood Ancillary Certificate (ECAC) Deadline

*To qualify for the 2020 SRTC tax credits all ECAC initial applications and renewals should be submitted **as soon as possible** and absolutely no later than December 31.*

For ECAC initial applications and renewals, please utilize the [following guidance from Certification](#) to help submit requests for certification. Submit the application and supporting documentation through [Teach LA Live!](#) Please allow 4-6 weeks processing time.

Tips for Success:

- Once an application is submitted, please check the email on file regularly for replies from the LDOE.
- Application submissions can be verified or check for any new messages using the History option on [Teach LA Live!](#)
- If an application is submitted by the director, please follow-up with them to check for [updates](#) sent to their email or [Teach LA Live!](#) history.
- Double check all documentation to ensure it was submitted correctly and is legible.

Teaching and Learning Updates

2021 Teacher Leader Summit

The 2021 Teacher Leader Summit will take place May 25-27, 2021 in New Orleans. This annual event will bring together educators focused on creating meaningful learning experiences for students.

Apply to Lead a Session at the Teacher Leader Summit 2021

Louisiana teachers and leaders are invited to share their expertise with educators statewide by applying to facilitate a session at Teacher Leader Summit 2021. Applications became available on November 16 and are **due by January 6, 2021**. Look out for more information and the application link in the [Teacher Leader Library](#) and upcoming newsletters.

The Teacher Leader Summit will take place from Tuesday, May 25 through Thursday, May 27, 2021, in New Orleans. Registration will open on January 8, 2021.

Please contact ldoeevents@la.gov with questions.

Contact List

Child Care Licensing

- call 225-342-9905
- email ldelicensing@la.gov or email [licensing consultants](#) directly

Child Care Assistance Program

- call 225-252-9543 or 225-250-7635
- email ldeccap@la.gov or enter a ticket at the [Provider Help Desk](#)

Child Care Provider Certification

- email providercertification@la.gov

Child Care Criminal Background Checks

- call 225-342-2716 or 225-342-5311 or email LDEchildcareCBC@la.gov

General Early Childhood Support

- email earlychildhood@la.gov