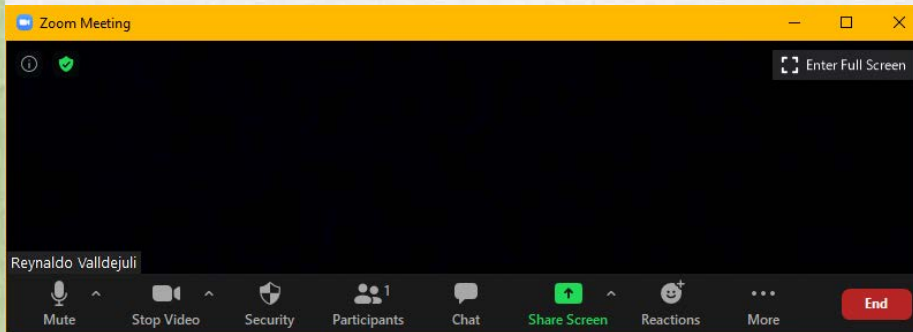


Zoom Meeting Preparation

- Please make sure your phone or computer is muted to minimize background noise.
 - To do this, hover over the bottom left-hand side of your screen and click “Mute.”
- Please make sure you have turned off your camera to save bandwidth and prevent any connectivity issues.
 - To do this, hover over the bottom left-hand side of your screen and click “Stop Video.”
- Please submit questions during the presentation in the “Chat” function located on the bottom of your screen.



NOTICE: In accordance with the Americans with Disabilities Act, if you need special assistance at this meeting please contact Idoecommunications@la.gov.



Nonpublic Monthly Call

June 21, 2021

Agenda

1. Logins and Deadlines
2. Louisiana Scholarship Rosters and 2021-22 Processes
3. Louisiana Scholarship Program Areas for Improvement
4. School Choice Rosters
5. Transfer Procedures
6. Communication
7. Questions
8. Closing Summary



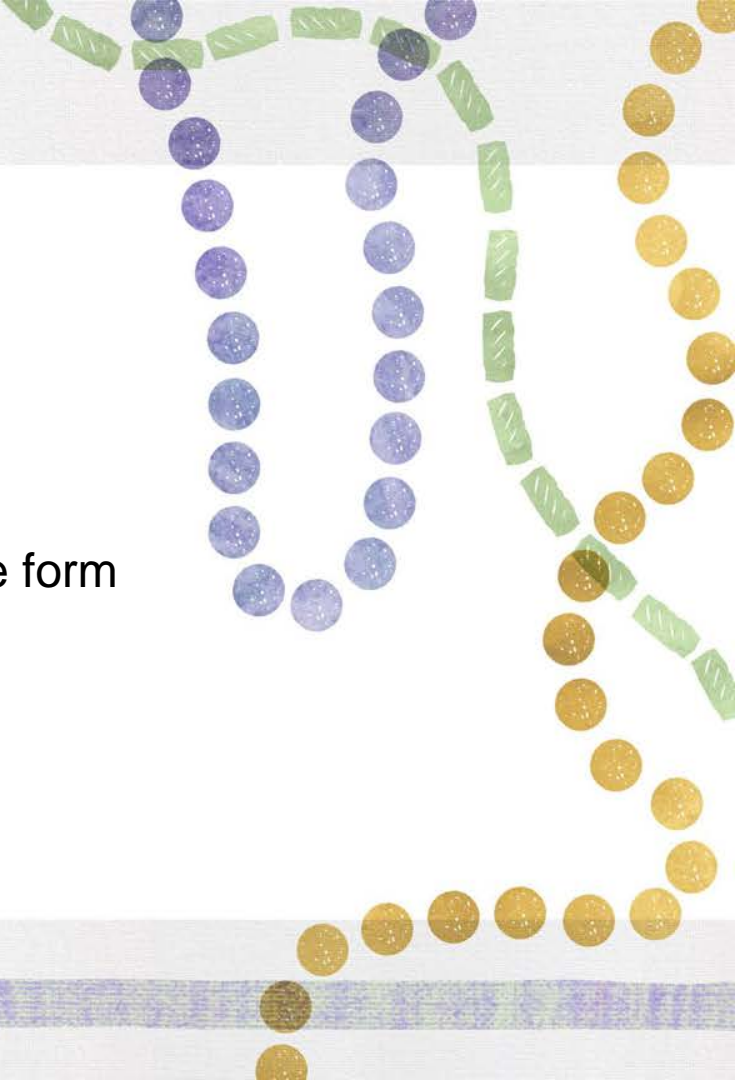
Logins and Deadlines

LEADS

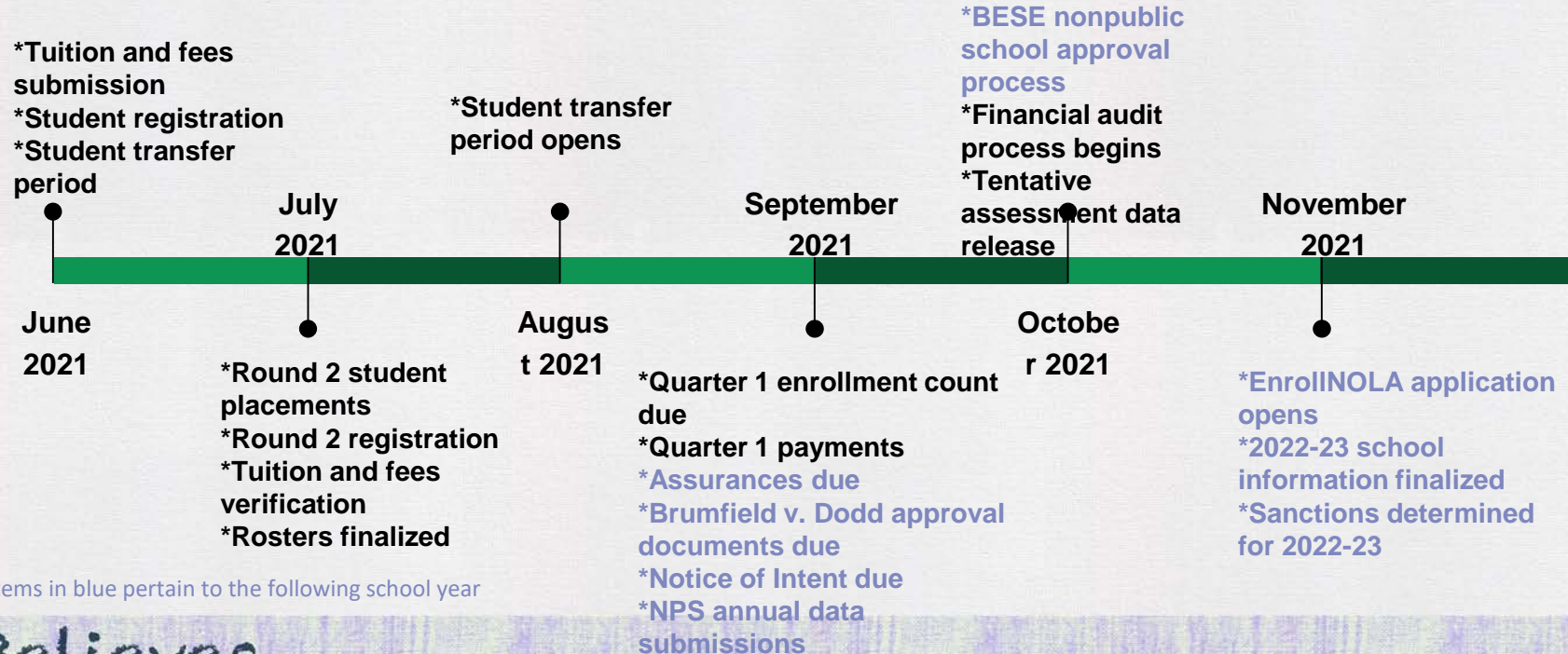
- LEADs can be accessed here: <https://leads3.doe.louisiana.gov/ptl/>
- Passwords expire every 60 days and must be reset here: <https://password.doe.louisiana.gov/>
- To gain access to SEE in LEADS click [here](#) to complete the request
- To gain access to NPS LEADS Nonpublic School Data Collection (NPS) click [here](#)



- **FTP**
 - Username(school code@nonpublic)
 - Passcode: previously determined by you
- **Tuition and Fee Reminder in Jotform**
 - If you have not already done so, complete the form by Thursday (originally due in June)



Upcoming dates for 2021



Louisiana Scholarship Rosters



2021-22 Student Placement Process

Number of seats awarded:

New and Continuing Students	Not Awarded	Total Applications
6324	2292	9631 (some students applied through OneApp and the LDOE)

Number of participating schools: 141 (not all have enrollees)

Number of requested NEW seats: 5621

Total allocation: \$41,178,680

2021-22 Student Placement Process

Awards were offered based on the priority of the students and any eligible student who was not offered an award will be placed on a waitlist and awards will be granted on a rolling basis after the second round of placements.

The priority structure is outlined in the guidance documents:

1. Students transferring from a closing Scholarship school
2. Current Nonpublic School Early Childhood Development (NSECD) students, if applicable. Only applies to students applying to the same school they attended while enrolled in NSECD.
3. Siblings of current Scholarship students (In order to link students as siblings, all siblings must be listed on each application.) Only applies to children that are applying to a Scholarship school which their sibling already attends on a Scholarship
4. Current Scholarship student applicants that are in a terminal grade
5. Applicants attending a D or F public school or students transferring from a sanctioned Scholarship school
6. Applicants attending a C school
7. Applicants residing in the same parish as the school, if school chose to offer a geographic preference
8. Current Scholarship students who wish to attend a different Scholarship school

2021-22 Student Placement Process

- The Louisiana Department of Education was able to expand the number of awards offered, including new seats and for the first time since 2017-18, we offered eligible schools a 1% tuition increase. An additional estimated \$1.3 million will be allocated for tuition increases to schools.
- Funding for the program is dependent upon allocations from the state legislature and has decreased compared to 5 years ago.
- The program does not generate any revenue for the LDOE. All funds spent on awards, tuition and fee increases or mandatory requirements such as annual audits.

2021-22 Student Placement Process

For the 2021-2022 school year, LDOE is maximizing funding to ensure every possible award is given to students through:

- i) Updating tuition and fees information from schools over the summer to get exact expenditures. If the tuition and fees (after the 1% increase) are lower than budgeted, additional awards will be given.
- ii) A second round of placements has been completed to fill any seats that were not claimed in the registration process.
- iii) Waitlist placements will occur starting in August.
- iv) The LDOE is not taking any administrative fees from the program.

Important Documents

- [Louisiana Scholarship Program Participation Guide](#)- outlines important requirements for participating schools as well as timelines and action items
- [Louisiana Scholarship Program Application Guide](#) - outlines student eligibility requirements as well as information about the schools offering new seats for 2021-2022
- [Nonpublic School Resources](#)- Useful tools for Nonpublic Schools
- [Louisiana Scholarship Program FAQ](#)- answers frequently asked questions including eligibility requirements and timelines for the Louisiana Scholarship Program (helpful for parents)

Louisiana Scholarship Program Areas for Improvement



Areas for Improvement

1. Multiple systems for student information for both parents and schools
 - a. Schools: FTP site, SEE, Jotform
 - b. Parent: SEE application, OneApp application, information from schools and LDOE
2. Timeliness of awards
3. Communication to and from schools
 - a. Not having specific information for contacts at schools
 - b. Communications to studentscholarships@la.gov as well as individual staff members
 - c. limited team for timely replies
4. No onboarding or offboarding process for schools
5. Automate processes to reduce administrative burden

Future Improvements

1. Increased communication from LDOE to parents
 - a. What is required of parents in the application process. For example, how to match siblings and terminal grade applications
 - b. LDOE will be holding informational sessions for parents and ensuring communication is sent regarding processes
 - c. Improved scholarship guides: for participating schools and for families
2. Run lottery process earlier in the spring with the rosters after initial placements completed ideally by May
 - a. Ease of planning for schools
 - b. More timely communication to parents
3. Increased access to rosters and school data for the participating schools
4. School contact information process aligned with LDOE practices
5. Creating onboarding and offboarding processes for schools

Future Improvements

Data Quality and Technology:

- LDOE is building a new, more robust data portal (EdLink) in which there will be two-way portals for SEE (Louisiana Scholarship Program), SCS (School Choice Program), and the home study program.
 - Will streamline access to information (eliminate need for FTP)
 - Improved student privacy protections
 - Easier access to information for schools
- Internally, LDOE is working to get more accurate information and improve the accuracy of school and student data (ex. updated contact information)

Information Sharing:

- Improved informational and guidance materials
- Increased accessibility and transparency

School Supports

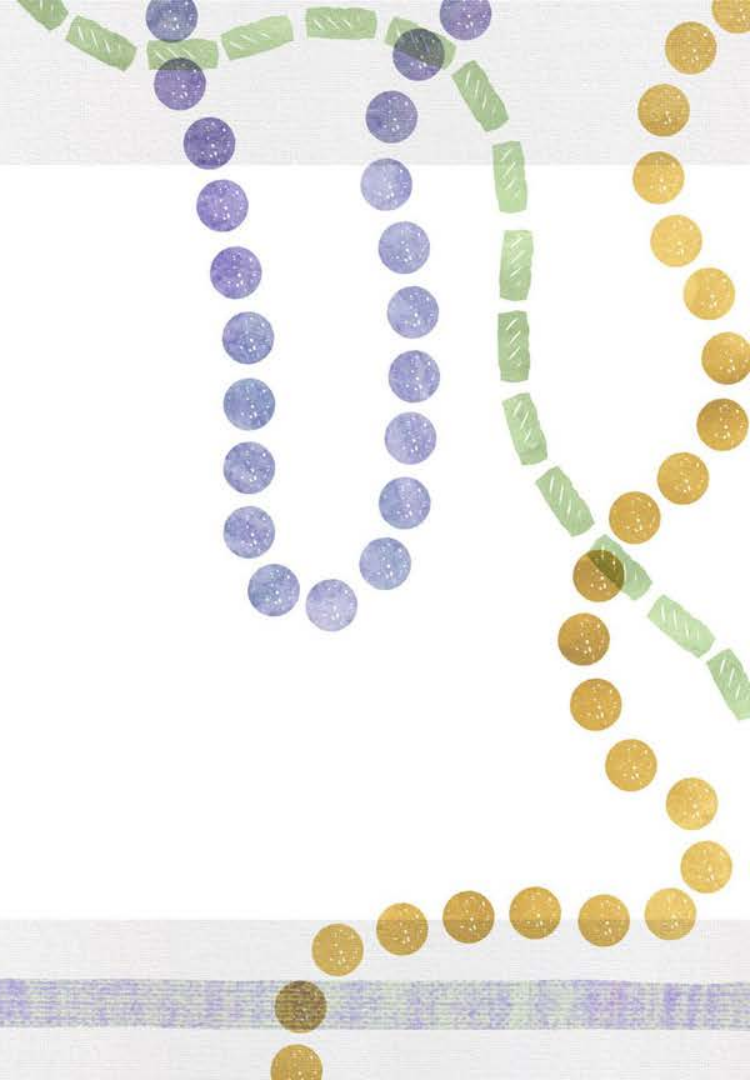
- Increasing involvement of nonpublic schools in LDOE resources
 - Information sharing
 - Annual Teacher Leader Conference
 - Involvement in resources provided by the LDOE
- Increased dedicated LDOE staff members
 - Welcome Yshauna Sanders!



Communication



- Email Protocol - Choose ONE - 24-72 hours
 - nonpublicschools@la.gov
 - LEADS unlock/reset/access
 - FTP problems and access
 - General
 - Changes in administration
 - School Choice Program
 - studentscholarships@la.gov
 - transfer forms
 - Louisiana Scholarship Program
 - testing
- Direct Contact Information
 - New Office #: 225-342-0549



Communication

From the LDOE:

Reoccurring communication:

- Nonpublic weekly newsletter: outlines upcoming actions, information, deadlines, and other relevant LDOE meetings/opportunities
- Monthly nonpublic schools calls: focused updates, discussion items, information sharing

As needed:

- Email from studentscholarships@la.gov or individual Portfolio Opportunity team member to targeted school contact

Communication

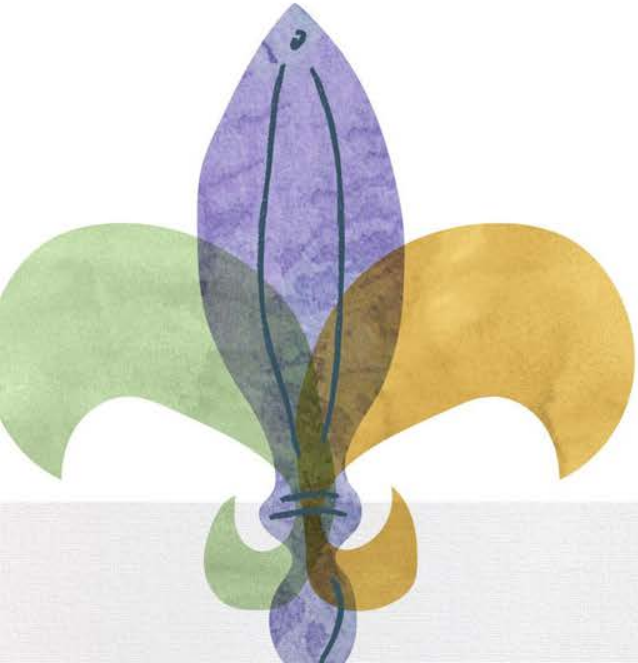
To the LDOE:

Updated contact list

- Goal is to expand the effectiveness of our communication: more targeted and accurate communication
- Using existing LDOE contact collection process (Jotform) to standardize data collection

- Families to email studentscholarships@la.gov for any concerns or questions
- Schools to email studentscholarships@la.gov for forms or regular submissions; individual Portfolio Opportunity team member for all other inquiries

School Choice Program Updates



2021-22 Student Placements

- Awards have been made to 402 students
- Due to limited funding, approximately 70 students did not receive awards and will be placed on the waiting list
- Please notify nonpublicschools@la.gov as soon as you know if a family is not registering or attending so we can fill the seat.

Transfer Process



2021-22 Student Transfers

- Summer student transfer requests were due earlier this month. All requests have been reviewed.
 - If you have not received notification already, you will by the end of the week
- It is the school's responsibility to notify parents of the approval or denial of the request
- School year transfer cycle:
 - The cycle will open August 1st for transfers for the 2021-22 school year and will be accepted on a rolling basis until Q3.
 - The protocol, for transferring a student would come from the receiving school. The school must complete [the transfer form](#) in its entirety. The parent should, first accept the award at the awarded school if they are newly awarded.



Questions

Helpful Links

- [LDOE Nonpublic Library](#)
- [LDOE School Choice Library](#)
- [Federal Poverty Guidelines](#)
- [Louisiana Scholarship Program](#)
- [Statewide Scholarship Application](#)



Thank You For Joining Today's Call.

Information regarding Nonpublic and Scholarship action items can be found in the [LDOE Weekly Nonpublic Newsletter](#).

Please reach out to the following contacts with questions:

FOR QUESTIONS ABOUT	EMAIL
Louisiana Scholarship Program	studentscholarships@la.gov
School Choice Program for Students with Exceptionalities	nonpublicschools@la.gov