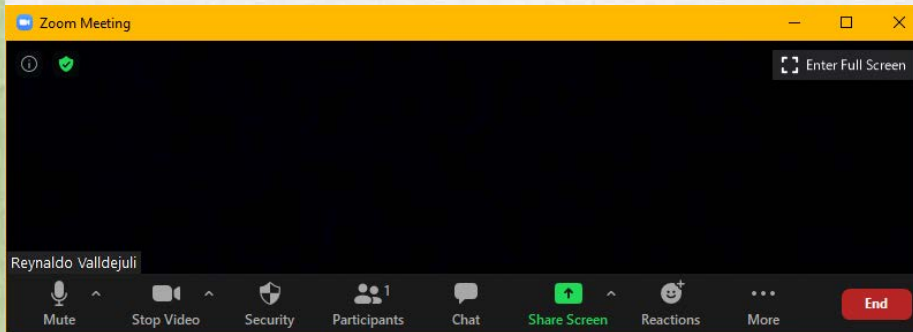


Zoom Meeting Preparation

- Please make sure your phone or computer is muted to minimize background noise.
 - To do this, hover over the bottom left-hand side of your screen and click “Mute.”
- Please make sure you have turned off your camera to save bandwidth and prevent any connectivity issues.
 - To do this, hover over the bottom left-hand side of your screen and click “Stop Video.”
- Please submit questions during the presentation in the “Chat” function located on the bottom of your screen.



NOTICE: In accordance with the Americans with Disabilities Act, if you need special assistance at this meeting please contact Idoecommunications@la.gov.



Nonpublic Monthly Call

September 23, 2021

Agenda



1. Hurricane IDA updates
2. 2021-22 Policy updates
3. 2021-22 Accountability
4. Tuition and fees
5. Reporting calendar
6. Point of Contact
7. Logins
8. Communication
9. Annual NPS reporting

Hurricane IDA LSP Updates

Displaced Students

- Do not exit any students that have been displaced until you have been able to confirm if any students have left their system. We will verify any duplicate enrollments within the quarter 2 enrollment verification phase (12/1-12/3 for LSP and 11/3 - 11/5 for SCP).
- If a student has been displaced due to Hurricane Ida, and they will be returning to your school prior to the first date of the Quarter 2 enrollment verification date of **12/1 for LSP and 11/3 for SCP**, please keep them on your roster unless they have been a confirmed drop.
- If the student does not intend to return to your school by the first date of the Quarter 2 verification date:
 - Please contact the family to see if they would like to request a transfer to another participating scholarship school. Follow the student transfer process outlined below.
 - If the family does not wish to transfer the student and will not be returning to your school prior to the Quarter 2 date, you may drop the student following the procedure below.
- If the family is experiencing a displacement that will likely continue past the Quarter 2 enrollment verification window, please contact your Portfolio Opportunities point of contact with the details of the situation and they can make a determination of if the student is able to maintain their scholarship for the remainder of the year.

Hurricane IDA LSP Updates

Student Transfer Process

- Transfer [Forms](#) must be completed and emailed to studentscholarships@la.gov. Please allow 5 business days for confirmation of processing before contacting studentscholarships@la.gov with questions. Schools will be notified of approval or denial of requests once they have been processed. Schools will be required to notify the parents of the outcome of the request. Transfers are only allowed to schools that meet accountability standards and who have Department approved available scholarship seats.

Student Drop Process

- When requesting to drop a student, please submit one of the following documents in order for the request to be approved.
 - Documentation in writing from the parent that their student no longer wishes to participate in the scholarship program OR
 - Attendance documentation indicating five consecutive days of absence from the beginning of the school year. Quarantine would NOT count as an absence OR
 - A request for student records from another school for the scholarship student OR
 - Notification from the parent (can be an email or text)

Legislative Policy Updates

House Bill 280 passed, now Act 196, makes several updates to Bulletin 133:

1) Program administration:

- a) The LDOE shall conduct site visits to observe the learning environment at schools that fail to meet minimum standards for academic performance
- b) The cap on 20% of enrollment being scholarship students has been removed

2) School eligibility:

- a) Schools must be approved by BESE (no longer provisionally or probationally approved) to participate
- b) Schools must be accredited or provisionally accredited by: Southern Association of Colleges and Schools accreditation organizations, the Cognia accreditation organizations, the National Association of Independent Schools accreditation organizations, the Louisiana Montessori Association, and the diocese or archdiocese in which the school is located.



Legislative Policy Updates

3. Accountability:

- a. A participating school that fails for three consecutive years to meet minimum standards for academic performance shall be ineligible to participate in the program
- b. This begins with the 2021-22 school year

An updated Scholarship Participation Guide will be distributed in October outlining these changes.

Accountability for 2021 and Sanctions

- The LDOE plans to request an accountability waiver for the 2021 assessments from the 2021-22 school year.
- If granted, the LDOE will request a waiver to BESE for accountability as it relates to enrollment sanctions for the 2022-23 school year.
- **Organizational and financial sanctions will still be issued, in accordance with the Scholarship Participation Guide.**



LSP Tuition and Fees Update

- Tuition and Fees Certification Worksheets will be distributed next week to all participating schools to confirm tuition and fees.
- Please sign and return the worksheets via email within the determined timeframe.
- This is an important part of the auditing review at the end of the year.



Reporting Calendar

2021-2022

August 2021

8/16-8/20	Send LSP schools roster verification to complete
-----------	--

8/1-9/21	award students from the waitlist
----------	----------------------------------

September 2021

9/1-9/3 *9/8-9/12*	Complete Q1 enrollment (SCS and SEE)
--------------------	--------------------------------------

9/8 *will open on this date annually*	NPS annual data submission- portal opens (SCS, SEE, and NPS)
---------------------------------------	---

9/20	Q1 payments (Monday or Thursday only-Typically Monday)
------	--

9/27	Portal Reopens for Schools who have not submitted Q1 enrollment (SCS and SEE)
------	--

9/30	Schools Submit NOI for LSP and SCS
------	------------------------------------

9/30	STO Q1 Enrollment Due (TDC)
------	-----------------------------

October 2021

10/1	BESE approval submissions for the 2022-2023 school year open
------	--

10/12	BESE approval submissions for the 2022-2023 school year due
-------	---

10/12	Brumfield v. Dodd approval documents due
-------	--

10/12 *will close on this date annually*	NPS Approval due-portal closes
--	--------------------------------

To be announced	School Webinar for upcoming year- information about application and form updates
-----------------	--

November 2021

11/1	LSP Schools return signed Tuition and Fee certification sheets
------	--

11/3 - 11/5	Q2 enrollment * SCS only
-------------	---------------------------------

11/22	Q2 payments (Monday or Thursday only-Typically Monday) * SCS only
-------	--

To be announced	OneApp application opens
-----------------	--------------------------

December 2021

12/1	Statewide LSP application opens
------	---------------------------------

12/1 - 12/3	Q2 enrollment * SEE only
-------------	---------------------------------

12/20	Q2 payments (Monday or Thursday only-Typically Monday) * SEE only
-------	--

12/31	Deadline for STO's to submit annual report
-------	--

12/31	STO's report Q2 enrollment (TDC)
-------	----------------------------------

January 2022

1/1	Deadline for STO's to submit financial report (for STO's that have June 30th fiscal year end)
1/15	Schools complete SCP NOI
1/28	Application cycle ends for LSP
date set by BESE	BESE board meeting to approve nonpublic schools
Based off of BESE date	Post approved nonpublic list to website

February 2022

2/2 - 2/4	Complete Q3 enrollment (SCS and SEE)
2/7	Post SCP application and SCP FAQ
2/21	Q3 payments (Monday or Thursday only-Typically Monday)
2/28	STO's submit Q3 enrollment (TDC)

March 2022

3/1	Open supplementary BESE approval round
3/18	SCP applications due

April 2022

4/4-4/8	Send LSP schools roster verification form and make manual awards as needed
4/11-4/30	Notify families of LSP awards

May 2022

5/4 - 5/6	Complete Q4 enrollment (SCS and SEE)
5/20	Last day for newly awarded students to register at LSP school
5/23	Q4 payments (Monday or Thursday only-Typically Monday) **Pending Final Audit Data
5/23	Send LSP schools tuition and fee jotform
5/31	STO's complete Q4 enrolment (TDC)

June 2022

6/6	Send LSP schools new student roster
6/8	Deadline for LSP schools to return new student rosters, decline awards for students who did not register by deadline
6/15	window opens for transfers (window closes from July 18th- August 1st)
date set by BESE	BESE board meeting to approve nonpublic schools which applied during supplementary round

July 2022

7/18	Transfer window closes (will resume August 1st)
7/20	create tuition and fee certification sheets based on actual and approved tuition amounts for LSP schools

August 2022

8/1	Transfer window reopens
-----	-------------------------



Point of Contact

Emails

Detra Gaulden

LSP- Diocese Schools

SCS - will receive an email from your Point of Contact

Yshauna Sanders

LSP- Independent Schools

SCS - will receive an email from your Point of Contact

When sending an email there is no need to send to personal email accounts. Please send all emails to www.studentscholarships@la.gov with your contact persons name in the subject line (EX: Attn-D. Gaulden or Attn-Y. Sanders)



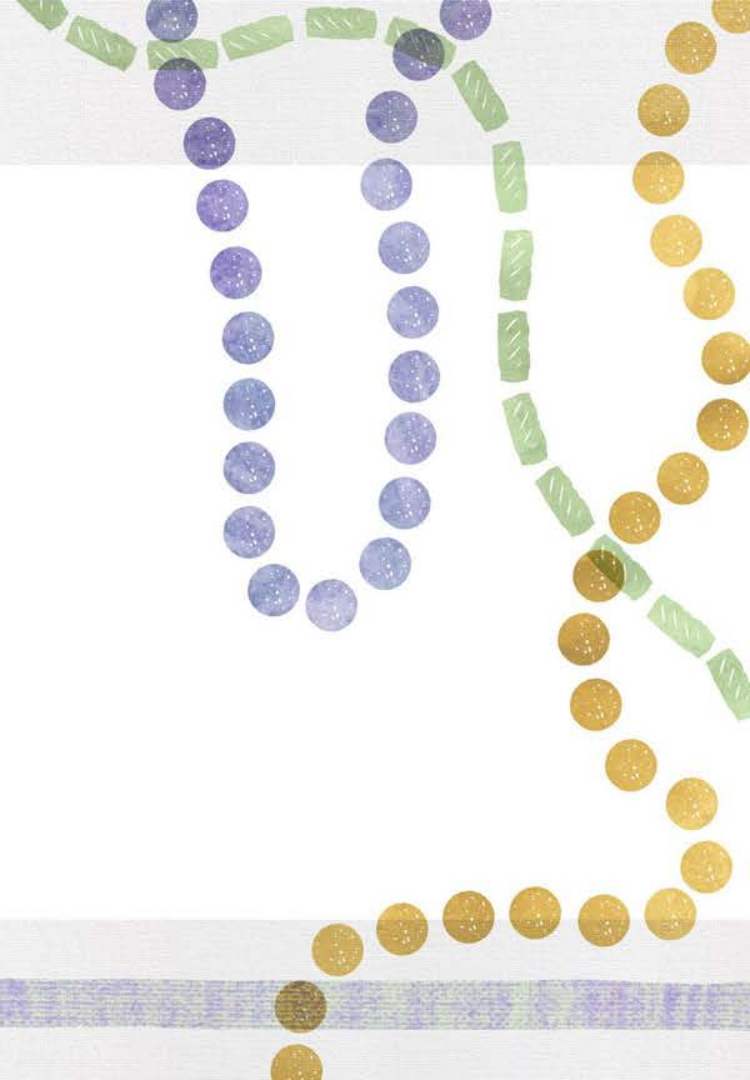
Logins

LEADS

- LEADs can be accessed here: <https://leads3.doe.louisiana.gov/ptl/>
- Passwords expire every 60 days and must be reset here: <https://password.doe.louisiana.gov/>
- To gain access to SEE in LEADS click [here](#) to complete the request
- To gain access to NPS in LEADS Nonpublic School Data Collection click [here](#)



- FTP
 - Username(school code@nonpublic)
 - Passcode: previously determined by you



Important Documents

- [Louisiana Scholarship Program Participation Guide](#)- outlines important requirements for participating schools as well as timelines and action items
- [Louisiana Scholarship Program Application Guide](#) - outlines student eligibility requirements as well as information about the schools offering new seats for 2021-2022
- [Nonpublic School Resources](#)- Useful tools for Nonpublic Schools
- [Louisiana Scholarship Program FAQ](#)- answers frequently asked questions including eligibility requirements and timelines for the Louisiana Scholarship Program (helpful for parents)



Communication

Communication

From the LDOE:

Reoccurring communication:

- Nonpublic weekly newsletter: outlines upcoming actions, information, deadlines, and other relevant LDOE meetings/opportunities
- Monthly nonpublic schools calls: focused updates, discussion items, information sharing

As needed:

- Email from studentscholarships@la.gov or individual Portfolio Opportunity team member to targeted school contact

Communication

To the LDOE:

Updated contact list

- Goal is to expand the effectiveness of our communication: more targeted and accurate communication
- Using existing LDOE contact collection process (Jotform) to standardize data collection

- Families to email studentscholarships@la.gov for any concerns or questions
- Schools to email studentscholarships@la.gov for forms or regular submissions; individual Portfolio Opportunity team member for all other inquiries

New Portfolio Structure for LSP

In an effort to improve communication with our participating nonpublic schools, the LDOE is moving to a portfolio structure.

Please note that each school/diocese will have one main point of contact and should reach out to that person, unless otherwise directed.

You will receive an email from your point of contact by the end of the week.

Issues	Portfolio Point of Contact
For: -Form submissions -General Email and Questions	Studentscholarships@la.gov
For: -Specific student inquiries -Additional information about policies and practices	Detra Gaulden or Yshauna Sanders *You will receive an email from your point of contact by the end of the week.

Annual NPS Reporting

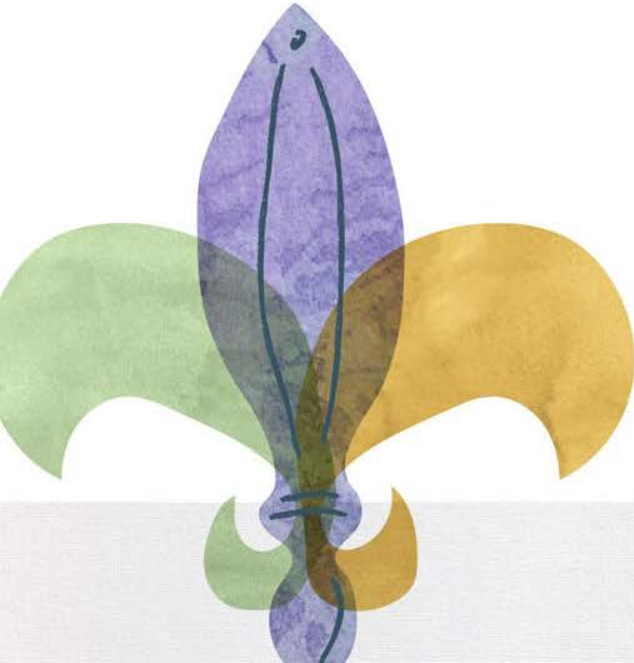
- The portal is now open for submissions
- The portal will close on **October 12th**
- Submissions are needed from the following:
 - SCS
 - SEE
 - NPS



Questions

Use the link below to submit your questions and someone will follow-up with you

<https://forms.gle/k62nvBi2gMKFRs3o8>



Helpful Links

- [LDOE Nonpublic Library](#)
- [LDOE School Choice Library](#)
- [Federal Poverty Guidelines](#)
- [Louisiana Scholarship Program](#)
- [Statewide Scholarship Application](#)



Thank You For Joining Today's Call.

Information regarding Nonpublic and Scholarship action items can be found in the [LDOE Weekly Nonpublic Newsletter](#).

Please reach out to the following contacts with questions:

FOR QUESTIONS ABOUT	EMAIL
Louisiana Scholarship Program	studentscholarships@la.gov
School Choice Program for Students with Exceptionalities	nonpublicschools@la.gov