



Supervisor Collaboration Agenda: Lake Charles Wednesday, November 14, 2018

The Supervisor Collaboration events will provide school system supervisors with information about the Department's priorities and access to high-quality tools and resources focused on supporting schools in 2018-2019 and planning for 2019-2020.

Location:

Calcasieu Parish Assessment Building
1618 Mill Street
Lake Charles, LA 70601

Parking:

Please park in the parking lots near the Assessment Building. Do not park in the Alternative School site parking lot next to the Curriculum Building. No parking pass is required.

Agenda:

8:00- 8:30 Sign-in
8:30- 9:00 Opening: School System Planning 2019-2020 and Super App Launch
9:00- 9:30 2017-2018 Accountability Results Release
9:45-11:00 Rotation 1: School System Planning Resources
(**universal content, groups begin to rotate**)
11:10-12:10 Rotation 2: Choice Session
12:10- 1:10 **LUNCH**
1:10- 2:10 Rotation 3: Choice Session
2:20- 3:20 Closing: Completing a Super App, Timeline, and Guidance
(**universal content, groups rotate back to Rotation 1 site**)

Preparation

All participants should **bring a fully charged laptop computer** with them to the event and [download session materials in advance](#).

Food and Hotels

Food will *not* be provided at the event. Click here for a list of [Lake Charles Hotel and Food Options](#).

Contact Us

Please contact your Network support team or DistrictSupport@la.gov with questions about this event.



Sessions

Participants will have the opportunity to choose **two** sessions that fit their needs and interests, beginning with Rotation 2. Attendees from each school system should coordinate with one another to ensure they get all the necessary information. Attendees will *not* register for specific sessions in advance. All sessions are filled on a first come, first served basis. All information in the table below is subject to change.

Session Topics	Session Title	Session Description	Audience/Room
OPENING			
School Improvement	School System Planning 2019-2020 and Super App Launch	All participants will join this session to learn about the improved school system planning process for 2019-2020 and the 'Super App', the new application in which school systems will submit improvement plans.	All: Assessment Processing/ Training Center
Accountability	2017-2018 Accountability Results Release	The Department will provide a briefing on 2017-2018 school and center performance results, released at www.LouisianaSchools.com on November 8.	All: Assessment Processing/ Training Center

NOTES:

Session Topics	Session Title	Session Description	Audience/Room
ROTATION 1			
School Improvement	School System Planning Resources	<p>All participants will join this session to increase understanding of the new school system planning process by reviewing and analyzing a key Super App planning tool, the School System Planning Framework.</p> <p>Assessment Bldg. Training Center Allen Calcasieu Lafayette All others not listed.</p> <p>Library Acadia Avoyelles Caldwell Cameron City of Monroe Grant Lincoln Ouachita Rapides SSD University View</p>	<p>Elementary Training Room 1 Ascension Caddo Beauregard Catahoula Vernon</p> <p>Elementary Training Room 2 Bossier CSUSA Iberville Jeff Davis JS Clark Sabine St. Mary</p>
ROTATION 2			
Academic Content	Supporting Students Who Struggle in ELA	Join this session to dig deeper into the framework, tools, and specific approaches to support students who struggle in ELA.	CTE Conference Room
Academic Content	Supporting Students Who Struggle in Math	Join this session to dig deeper into the framework, tools, and specific approaches to support students who struggle in math. Participants will analyze the findings from the 2017-2018 Intensive Algebra I pilot and learn how to apply the findings from that pilot to other grade levels.	Elementary Training Room 1

Session Topics	Session Title	Session Description	Audience/Room
ROTATION 2 CONT'D			
Federal Programs	Preparing for Super App	This training will provide technical assistance to those who will be responsible for submitting the LEA's Super App in eGMS.	Assessment Processing/Training Center
Student Opportunities	Behavioral Intervention Redesign: A New Model for Student Support and Success	In this session, participants will learn about the toolbox of resources to support schools identified as Urgent Intervention for discipline. Participants will receive an overview of how the new resources support evidence based behavioral intervention, as well as details on how to select and implement interventions based upon the schools' specific student population and needs.	Training Room 107
Student Opportunities	HS Pathways and Jump Start 2.0	In this session supervisors will review the most recent TOPS University and Jump Start Statewide Pathway requirements and understand how the Jump Start 2.0 process can improve industry alignment, rigor, and equitable access of IBCs.	Elementary Conference 2
Talent	Building Your School System's Leadership Pipeline	In this session supervisors will begin the strategic planning necessary to build leadership pipelines in their districts. Using workforce data participants will identify areas of needs in their current leadership pipelines. Participants will then have an opportunity to build their understanding of current statewide initiatives including Principal Fellowship, Content Leaders, and Mentor Teacher designed to support leadership pipelines and draft a plan for how they will leverage these supports.	HS Conference Room
Talent	Workforce Talent in the Super App	In this session, school systems will use workforce data to develop plans in Super App, prioritizing workforce talent strategies for their persistently struggling schools. NOTE: Participants should bring a charged laptop to the session and be prepared to log into the secure portal to access your educator workforce data.	Library

Note: All of the session information in this table is subject to change.

Session Topics	Session Title	Session Description	Audience/Room
ROTATION 3			
Academic Content	Supporting Students Who Struggle in ELA	Join this session to dig deeper into the framework, tools, and specific approaches to support students who struggle in ELA.	Assessment Processing/Training Center
Academic Content	Supporting Students Who Struggle in Math	Join this session to dig deeper into the framework, tools, and specific approaches to support students who struggle in math. Participants will analyze the findings from the 2017-2018 Intensive Algebra I pilot and learn how to apply the findings from that pilot to other grade levels.	Library
Federal Programs	Preparing for Super App	This training will provide technical assistance to those who will be responsible for submitting the LEA's Super App in eGMS.	CTE Conference Room
Student Opportunities	Behavioral Intervention Redesign: A New Model for Student Support and Success	In this session, participants will learn about the toolbox of resources to support schools identified as Urgent Intervention for discipline. Participants will receive an overview of how the new resources support evidence based behavioral intervention, as well as details on how to select and implement interventions based upon the schools' specific student population and needs.	Elementary Conference Room 2
Student Opportunities	John Hopkins Cohort	In this session, participants will review the objectives and key milestones related to the Johns Hopkins High School Redesign Cohort. Thirty high schools--alternative and traditional--have engaged in a collaborative, including members of LDOE and Johns Hopkins University, that focused on four key levers of school redesign and accompanying strategies. Members of the cohort were tasked with reimagining both school structure and services to maximize positive student outcomes, and facilitate high schools preparing students for post-secondary education and careers.	HS Conference Room
Student Opportunities	HS Pathways and Jump Start 2.0	In this session supervisors will review the most recent TOPS University and Jump Start Statewide Pathway requirements and understand how the Jump Start 2.0 process can improve industry alignment, rigor, and equitable access of IBCs.	Middle School Meeting Room

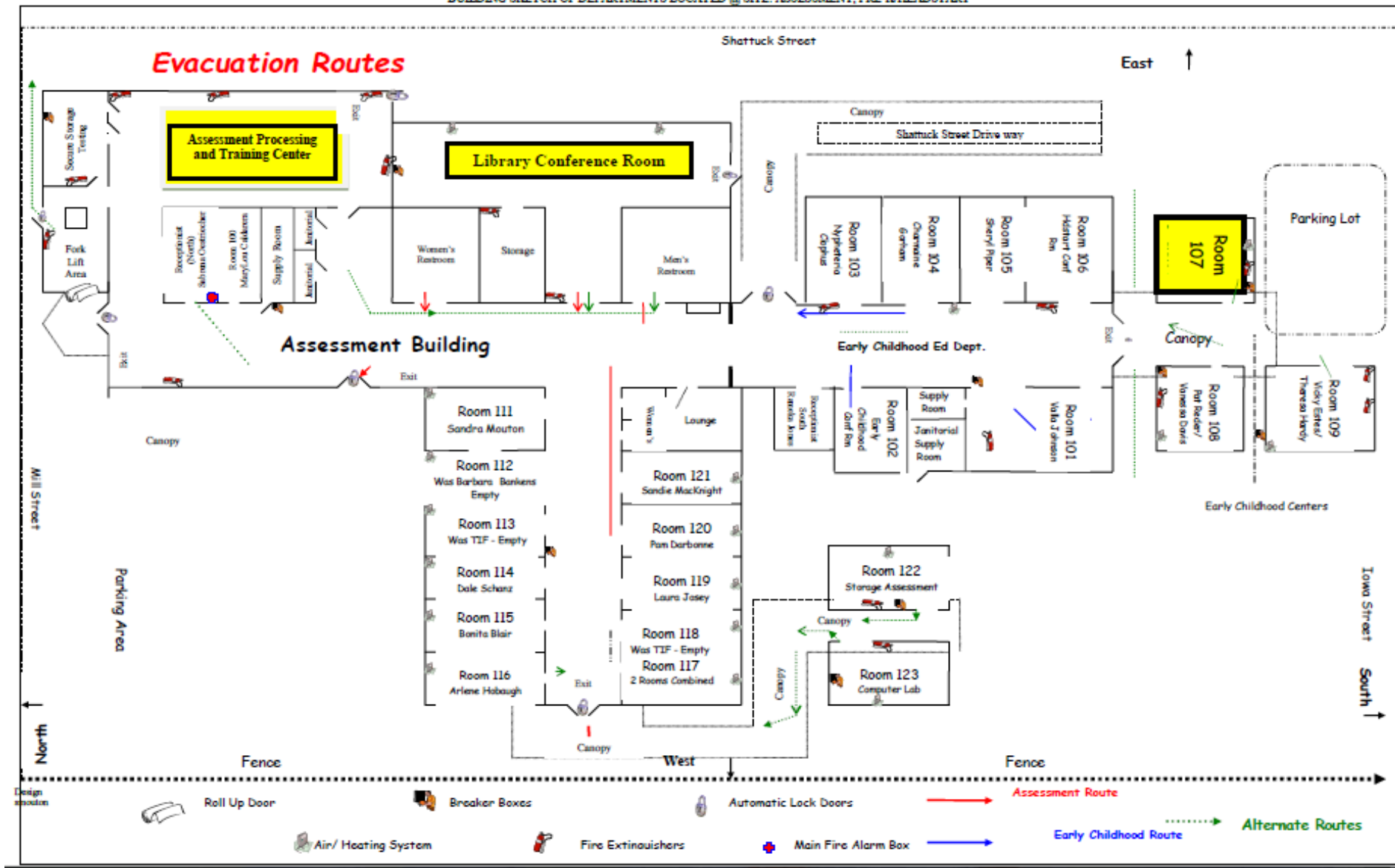
Note: All of the session information in this table is subject to change.

Session Topics	Session Title	Session Description	Audience/Room
Talent	Building Your School System's Leadership Pipeline	In this session supervisors will begin the strategic planning necessary to build leadership pipelines in their districts. Using workforce data participants will identify areas of needs in their current leadership pipelines. Participants will then have an opportunity to build their understanding of current statewide initiatives including Principal Fellowship, Content Leaders, and Mentor Teacher designed to support leadership pipelines and draft a plan for how they will leverage these supports.	Training Room 107
Talent	Workforce Talent in the Super App	In this session, school systems will use workforce data to develop plans in Super App, prioritizing workforce talent strategies for their persistently struggling schools. NOTE: Participants should bring a charged laptop to the session and be prepared to log into the secure portal to access your educator workforce data.	Elementary Training Room 1
<p>NOTES:</p>			

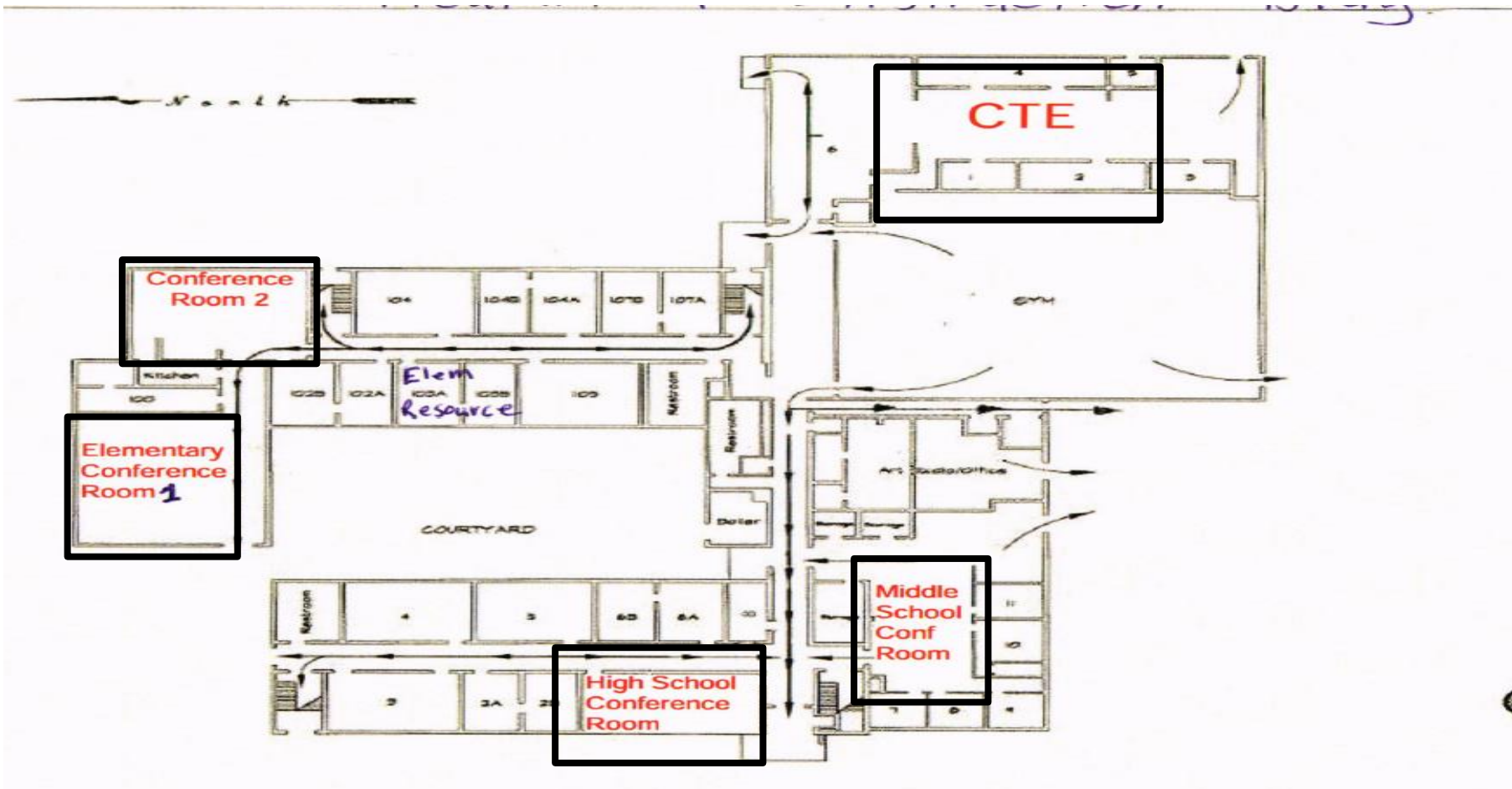
Session Topics	Session Title	Session Description		Audience/Room
CLOSING				
School Improvement	Completing a Super App: Timeline and Guidance	<p>All participants will join this session to learn about the actions required of districts to prepare their Super App. The planning process begins in November and concludes on February 1 when Super Apps are due. Specific tools and guidance about completing the Super App planning process will be provided at this session.</p>		<p><u>Assessment Bldg. Training Center</u> Allen Calcasieu Lafayette All others not listed.</p> <p><u>Library</u> Acadia Avoyelles Caldwell Cameron City of Monroe Grant Lincoln Ouachita Rapides SSD University View</p> <p><u>Elementary Training Room 1</u> Ascension Caddo Beauregard Catahoula Vernon</p> <p><u>Elementary Training Room 2</u> Bossier CSUSA Iberville Jeff Davis JS Clark Sabine St. Mary</p>

Curriculum and Instruction Building

ASSESSMENT BUILDING – 1618 MILL STREET
 BUILDING SKETCH OF DEPARTMENTS LOCATED @ SITE: ASSESSMENT, PRE-K/HEADSTART



Note: All of the session information in this table is subject to change.



Facility First Floor

Note: All of the session information in this table is subject to change.