



Early Childhood Provider Updates

August 4, 2022

Agenda

- Welcome
- COVID-19 Updates for Providers
- Child Care Assistance Program (CCAP) Updates
- Licensing Updates
- Teaching and Learning Updates
- Upcoming Events

Welcome!



COVID-19 Updates for Providers



COVID-19 Resources



- LDOE COVID-19 [landing page](#) and [library](#)
- LDOE *BELIEVE!* [landing page](#) and [library](#)
- COVID-19 [FAQ](#) for early childhood
- [Office of Public Health Guidelines for Child Care](#)
- Questions regarding COVID-19, contact LDOECOVID19Support@la.gov





Child Care Assistance Program (CCAP) Updates

Child Care Assistance Program Updates

Inquiry Response Delays

Thank you for your patience in our delayed response to provider requests for assistance. We value all providers and are working diligently to address concerns as timely as possible. Response delays are due to staff shortages, an increase in CCAP applications, and an increase in provider queries.

Please allow additional time for our response. Continue to place concerns in the [Provider Ticket System](#). There will be no adverse action on the family's case as a result of our delay.

Please have families submit all requested documents. CCAP staff will contact families as soon as possible. Again, thanks for partnering with the Child Care Assistance Program.

Child Care Assistance Program Updates

24-Month Certification Period

In an effort to provide continuity of care for children in the CCAP program and to address the large number of new CCAP applications, LDOE will extend CCAP eligibility to 24 months in total.

Pandemic application cases for essential workers will remain at the original 12 month period due to the specific source of funding for these cases. Cases for children already receiving 24 months of service because of their age will not be extended.

Therefore, beginning with July 2022, cases will be extended by 12 months, not to exceed 24 months in total. At the 24 month mark, families will be notified via email that it is time for their redetermination to maintain child care with CCAP, if eligible. Providers are asked to help in notifying CCAP families of their redetermination.

Should there be any questions, please contact the Provider Help Desk at ldccap@la.gov or by phone at 225-250-7635 or 225-252-9543.

Child Care Assistance Program Updates

Family Copayments

Beginning August 1, 2022, family copayments have been reinstated.

In response to COVID-19, family copayments were waived. **Beginning August 1, 2022, copayments have been reinstated.**

As a reminder, copayments listed on the "CCAP 12 - Provider Notice of Payment" correspondence are the parent's portion of the state daily rate which is deducted prior to issuance of regular weekly provider payments.

Example: The state's daily rate for a child, birth to 11 months, is \$68.00. The parent's copayment of the daily rate is \$2.00. The state will pay \$66.00 per day resulting in a weekly payment to the provider of \$330.00.

Licensing Updates



Licensing Updates

Auto-injectable Epinephrine Requirements

Early Learning Center staff must be trained on anaphylaxis and epinephrine auto-injectors.

Effective August 1, 2022, the policy for early learning centers states:

- “Each early learning center shall” Adopt a policy authorizing a trained early learning center employee to administer auto-injectable epinephrine to a child who is believed to be having an anaphylactic reaction whether or not such child has a prescription for epinephrine
- Distribute the policy to all parents or other legal guardians
- Have at least one employee trained
- May maintain a supply of an auto-injectable epinephrine at the center in a secure and easily accessible location but inaccessible to children

Note: If medication administration training has been completed, your site has met the training requirement.

Licensing Update

Auto-injectable Epinephrine Requirements

Providers may contact Code Ana for epinephrine education courses.

Directors can sign up with Code Ana for the following:

- One FREE epinephrine certification course
- Discount for additional certifications through September 30, 2022
- Epinephrine policy guidance

Questions for Code Ana? E-mail Sarah Jane Lowery at sarahjane@codeana.org.

Licensing Updates

Emergency Preparedness

With the recent school shooting at Robb Elementary School in Uvalde, Texas, the Department encourages you to revisit and practice your lockdown procedures. The Department also recommends that you ask your local [Parish Office of Homeland Security and Emergency Preparedness](#) to review your emergency preparedness plan. In addition, [Child Care Aware](#) has good resources and training for a variety of crisis and disaster situations. The [Institute for Childhood Preparedness](#) has resources on active shooter preparedness as well.

There will be two sessions at the Early Childhood Conference provided by The Institute for Childhood Preparedness. One session will be on Situational Awareness and the other on De-escalation Techniques. The LDOE will also provide several opportunities this fall for in-person Active Shooter Preparedness trainings which will be held across the state.

More information will be forthcoming.

Licensing Updates

Emergency Preparedness

In the event of a potential disaster, take the following steps to prepare:

- Stay up-to-date with the status of any storm or other potential natural disaster and its impact on your area.
- Ensure that LDOE has your current cell phone number and email address.
- Review and update evacuation and safety plans.
- Practice evacuation and reunification plans.
- Let families know how you will communicate if you are unable to reopen following a disaster.
- Review the Frequently Asked Questions below and be ready if a disaster declaration is made for your parish:
 - [Child Care Assistance Program \(CCAP\) – Before, During, and After a Disaster](#)
 - [Reinstatement of a Child Care Center License Following a Disaster](#)
- Pay close attention to the messages from your local officials.
- Obtain your parish's [Emergency Preparedness Contact](#) phone number.
- Review the useful links below:
 - <http://www.getagameplan.org/>
 - <http://www.emergency.louisiana.gov/>
- Be Safe.

Licensing Updates

Reminder: Motor Vehicle Passenger Checks

The negative consequences of extreme heat are so significant that Louisiana has a [law](#) prohibiting leaving children unattended in a vehicle. A first offense for leaving a child under the age of six unattended or unsupervised in a car will net a fine of up to \$500 or imprisonment up to six months or both. Each subsequent offense will can result in felony imprisonment for no less than one year and a fine of no less than \$1,000.

As required in [Bulletin 137](#) §2017, Motor Vehicle Passenger Checks, it is imperative that vehicles are adequately inspected for children before staff exit the vehicle, especially with outside temperatures. Children can die in a hot vehicle in a matter of minutes.

Licensing Updates

Reminder: Motor Vehicle Passenger Checks

A visual passenger check of a vehicle is required to ensure that no child is left in the vehicle.

Each vehicle shall have a vehicle passenger check and a face-to-name count conducted at each of the following times: prior to leaving center for destination; upon arrival at and prior to departure from each destination; and upon return to center.

A staff person shall

- Physically walk through the vehicle and inspect all seat surfaces, under all seats, and in all enclosed spaces and recesses of the interior of the vehicle.
- Record the time of the visual passenger check and sign the log, indicating that no child was left in the vehicle.

EdLink Updates



EdLink Updates

The Department is excited to announce that EdLink Licensing will be live soon.

The Department is gradually adding providers as each center's renewal date approaches. This will continue with September and October renewals. Those with renewals in September and October will be contacted by the Division of Licensing.

As a reminder, the TOTS machines or IVR must continue to be used to track attendance until we have converted over to EdLink for the Child Care Assistance Program. We anticipate that that transition will occur in early fall.



Teaching and Learning Updates

Teaching & Learning Updates

Act 414: Mandatory Kindergarten Attendance

Pursuant to Louisiana R.S. 17:151.3(C)(1), beginning in the 2022-2023 academic year children must attend a full-day, full-year kindergarten program.

Qualifying kindergarten programs include:

- Programs that are full-day, for a full school year
- Programs provided by public schools, non-public schools, or an approved home-study program

A parent may opt to defer enrollment of a child in kindergarten for one year if either of the following applies:

- The child is four years of age on the first day of the school year
- The child is enrolled in a pre-Kindergarten program

Please contact EducationPolicy@la.gov with questions.

Teaching & Learning Updates

Act 414: Academic Readiness Screenings

Pursuant to Louisiana R.S. 17:151.3(C)(1), a child must have attended a full-day, full-year kindergarten program and pass an entry assessment in order to enter first grade in 2023-2024.

The Department has begun sharing information with school systems who will enroll students for first grade, including additional details about qualifying kindergarten programs and qualifying academic readiness screenings:

- A qualifying academic readiness screening includes an assessment identified and administered by the local school board prior to students' enrollment in first grade.

Please contact EducationPolicy@la.gov with questions.

Teaching and Learning Updates

Performance Profile Data Certification

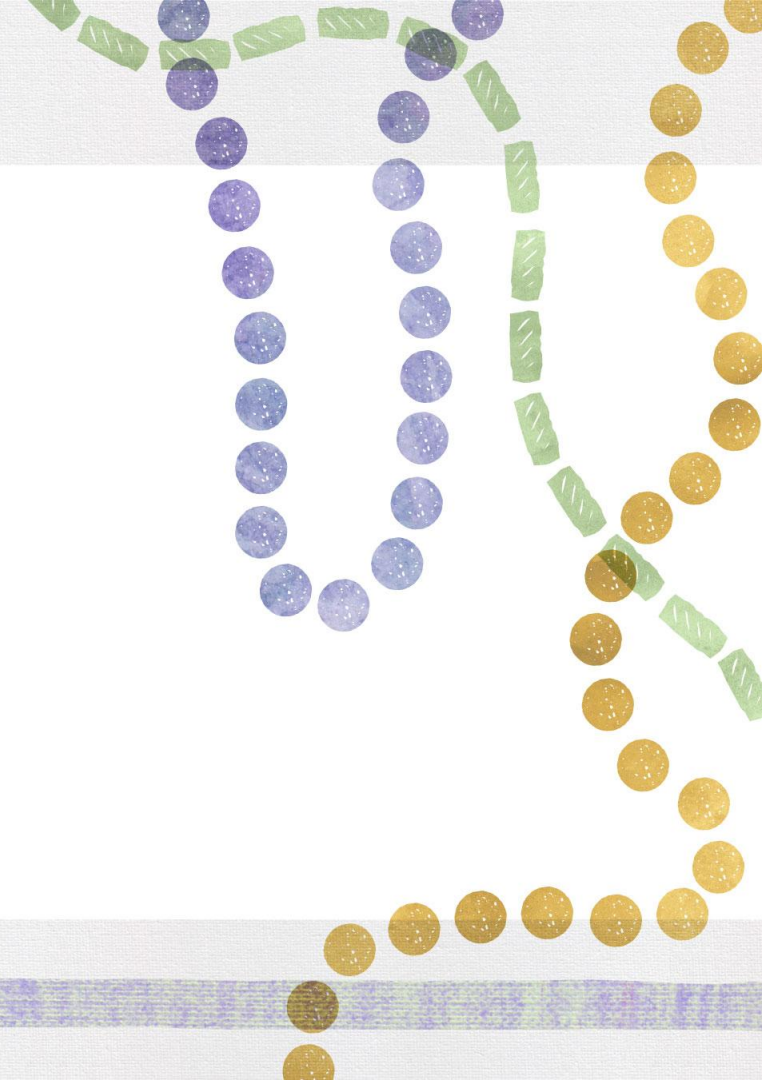
Data Certification is a critical process that allows each site to ensure that self-reported informational metrics are accurately captured and reflected in their Performance Profile.

- Data Certification captures various informational metrics as reported in the CLASS® Portal, rolled up at the network, site, and classroom-level.
- Community network lead agencies work with programs to verify information.
- All informational metrics should reflect what was true on October 1, 2021, unless otherwise specified.
- If a classroom was open October 1, informational metrics should still be reported even if the information changed or the classroom closed before the end of the year.
- All data, for all sites and classrooms, must be certified by community network lead agencies in the Louisiana Data Review (LDR) system and will be reported in the 2022-2023 Performance Profiles.

Programs should provide any needed corrections to their community network lead agency. The LDR system will close August 15, 2022.

Contact Alicia Franklin at alicia.franklin@la.gov for assistance.

Early Childhood Teacher and Leader of the Year





Annie Richardson

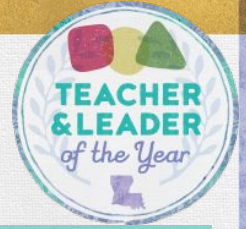
CANEVIEW K-8 HEADSTART
WEST BATON ROUGE PARISH



Rochelle Wilcox

WILCOX ACADEMY
ORLEANS PARISH

Early Childhood Teacher and Leader of the Year 2022-2023



The Louisiana Department of Education is on the search for the next Teacher and Leader of the Year candidates! YOU play a pivotal role in identifying these excellent candidates.

Nominations for the Early Childhood Teacher and Leader of the Year are open!

- Nominate as many teachers and leaders as you think are eligible candidates
- Candidates must work in either a Type III Center, Family Child Care site, Head Start Center, or Early Head Start Center
- Nominations close on Friday, September 30 at 5 p.m.
- Be prepared to support your nominee(s) throughout the application process

Please save the [Early Childhood Teacher and Leader of the Year Nomination Form](#).

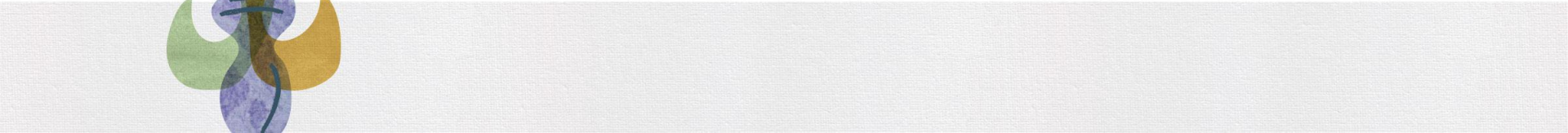
If you have any questions about the application process, please contact devon.camarota@la.gov.



Early Childhood BE ENGAGED® Birth to 5 Framework



*Guest Speaker
Amanda Colon,
Family Support and Coordinated Enrollment Manager*



Early Childhood BE ENGAGED®

Birth to 5 Framework

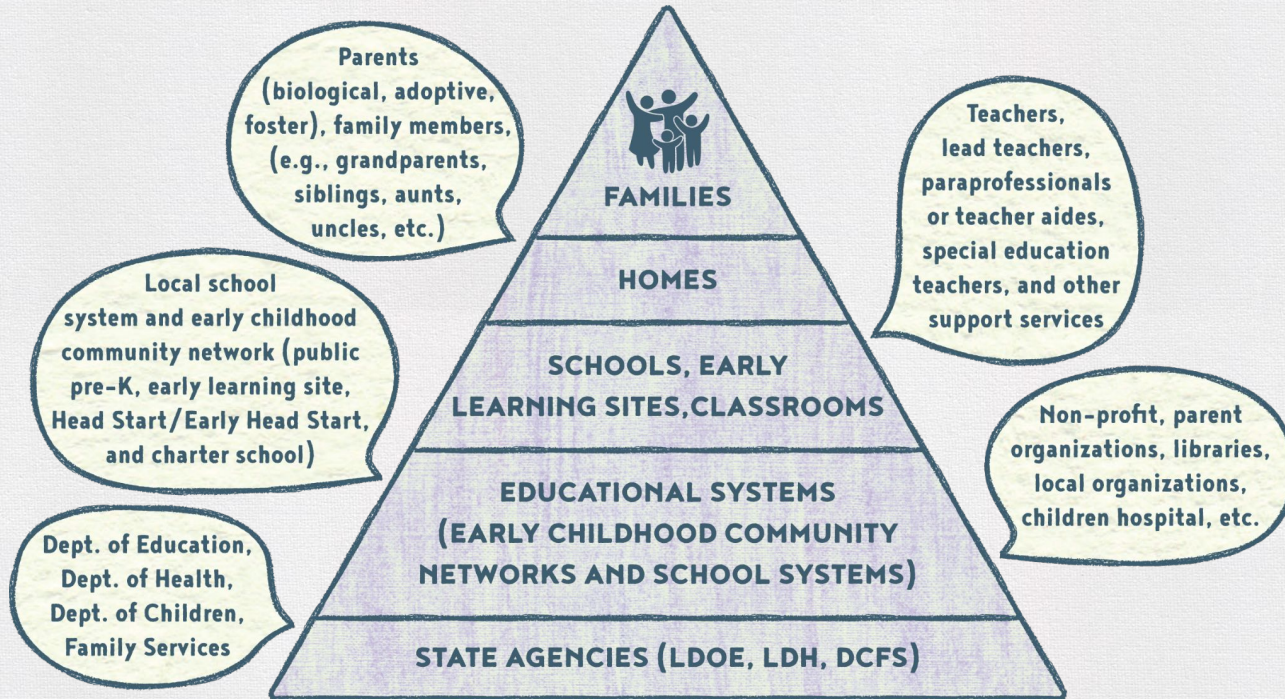
The Department released the “Early Childhood Be Engaged Birth - 5 Framework Guidance” to support early care and education programs to build relationships with families using research-based engagement strategies.

The [Early Childhood Be Engaged Birth - 5 Framework](#) provides the early childhood field with a set of common goals for family engagement practices and strategies to assist with statewide implementation.

- The seven Family Engagement Goals promote positive child outcomes for school readiness and success in school and life. The goals align to Louisiana’s definition of family engagement to support empowering relationships and shared responsibility for the personal success of children.
- The Framework provides eight Strategies that are universally designed so that each could be paired with any of the Family Engagement Goals based on the community’s needs, capacity, and resources.

Family Engagement

Collaboration, Interdependence, and Support



Outcomes for Children



All early learning programs aspire to create a positive learning environment where children are:

- safe;
- healthy and well;
- learning and developing;
- engaged in positive relationships with family; members, caregivers, and other children;
- ready for school; and
- successful in school and life

What Does Family Engagement Look Like?

Providing ongoing, consistent engagement opportunities is necessary to help build a sense of dependability and trust.



Partner with families to plan and host engagement events to share strategies and support learning at home.



Provide ongoing, consistent support to families to continue to use learning programs and strategies at home.



Higher levels of engaged families supporting learning at home and improved child outcomes.

Goals to Support Child Outcomes

FAMILY ENGAGEMENT GOALS



Family
Well-being



Positive
Parent-Child
Relationships



Families
as Lifelong
Educators



Families
as Learners



Family
Engagement
in Transitions



Family
Connections
to Peers and
Community



Families as
Advocates and
Leaders



CHILD OUTCOMES

Early Childhood Be Engaged Birth to 5 Framework

Seven Goals

EC Goal 1: Family Well-being	Families are provided with connections to health and mental health services, and other family support services.
EC Goal 2: Positive Parent-Child Relationships	Parents and families develop warm relationships that nurture their child's health, development, and learning. Building positive relationships will entail establishing trust and mutual respect by getting to know families.
EC Goal 3: Families as Learners	Parents and families observe, guide, promote, and participate in the everyday learning of their children at home, at school, and in their communities. Approaching interactions with families as equal partners by sharing decision-making, learning from differences, and adopting new practices results in strengths-based partnerships.
EC Goal 4: Families as Learners	Parents and families learn about their child's personality, development, and learning style. They also advance their own learning interests through education, training, and other experiences that support their parenting, careers, and life goals.

Early Childhood Be Engaged Birth to 5 Framework

Seven Goals

EC Goal 5: Family Engagement in Transitions	Parents and families encourage and advocate for their child's learning and development as they transition to new learning environments.
EC Goal 6: Family Connections to Peers and Community	Parents and families form connections with peers, mentors, and other community members in formal or informal social networks. These networks are supportive and educational. They honor the inclusivity of families' home language and culture and enhance families' social wellbeing and community life.
EC Goal 7: Families as Advocates and Leaders	Parents and families advocate for their children and play active roles in early childhood programs. They participate in decision-making, program/policy development, and organizing activities in communities and states to improve children's safety, health, development, and learning experiences.

Contact Info and Additional Resources

Feel free to contact me with any
questions at
amanda.colon@la.gov



Upcoming Events



Upcoming Webinar

The Department will be hosting monthly webinars for early childhood providers. These webinars will include important updates and reminders for all provider types.

Providers can access the next provider webinar using the information below:

- **Webinar Date/Time:** Thursday, September 1 at 1 p.m.
- **Webinar Link:** <https://ldoe.zoom.us/j/93597745872>
- **Phone Number:** 1-312-626-6799
- **Meeting ID:** 935 9774 5872

Teaching and Learning Updates

GOLD® Back-to-School Webinar

The Department will be hosting a GOLD® Back-to-School webinar for site leaders. Participants can access the GOLD® informational webinar using the information below.

Webinar Topic:	GOLD® Update Webinar for Site Administrators
Webinar Date/Time:	Wednesday, August 10 at 1 p.m.
Webinar Link:	https://ldoe.zoom.us/j/96684403327
Meeting ID:	966 8440 3327
Passcode:	757598

Please contact ECAssessment@la.gov with questions or concerns.

Please read the Department's updated [TS GOLD® Guidance](#) and [TS GOLD® FAQ](#) documents for helpful information.

Upcoming Events

New Director Office Hours

The Department hosts New Director Office Hours to provide new administrators and directors with a deeper understanding of LDOE requirements for Type III centers.

The next office hours will focus on “Engaging Parents, Families & Communities.”

Providers can access the next office hours webinar using the information below:

- **Webinar Date/Time:** Friday, August 26 at 12 p.m.
- **Webinar Link:** <https://ldoe.zoom.us/j/99075363953>
- **Passcode:** 126700
- **Phone Number:** 1-346-248-7799
- **Meeting ID:** 990 7536 3953

Contact Info

Child Care Licensing

- Call 225-342-9905
- Email ldelicensing@la.gov or email licensing consultants directly

Child Care Assistance Program

- Call 225-250-7635 or 225-252-9543
- Email ldeccap@la.gov or enter a [ticket](#) at the Provider Help Desk
- TOTS Assistance: Jackie.Droddy2@la.gov

Child Care Provider Certification

- Email providercertification@la.gov

Child Care Criminal Background Checks

- Call 225-342-2716 or 225-342-5311 or email LDEchildcareCBC@la.gov

General Early Childhood Support

- Email earlychildhood@la.gov

