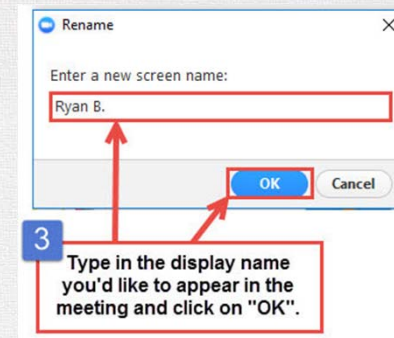
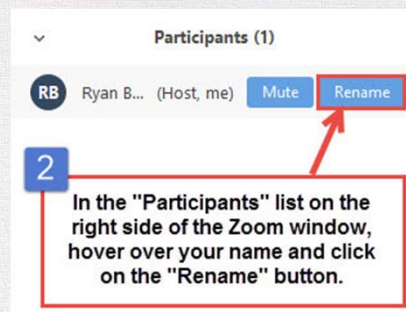
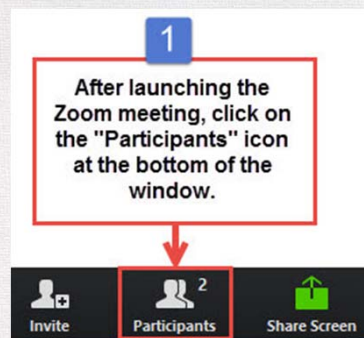


## NEW Zoom Name Change

### Network and Name

1. Click on the "Participants" button at the top of the Zoom window.
2. Hover the mouse over your name in the "Participants" on the right of the Zoom window. Click on "Rename."
3. Enter your **network name and name** (ex.: **Calcasieu Michelle Joubert**) so it will appear in the Zoom meeting and click on "OK."



# Early Childhood Lead Agency Office Hours

December 6, 2022

## Agenda

- Early Childhood Updates
- Accountability
- Young Children with Disabilities
- Director Updates
- Upcoming Events







# Early Childhood Updates



# Early Childhood Allocations

## Spending Down Roll-Over and PDG Funds

*This is a reminder that **all** PDG funds need to be drawn down by December 31, 2022, as well as CRRSA roll-over from the 2021-2022 fiscal year. Anything **not** drawn down will **not** roll over.*

### Initiatives Impacted by PDG Funds:

- B-3 Seats
- Ready Start Networks
- EC Guides
- Family Child Care Pilot (roll-over)

### Initiatives impacted by CRRSA Roll-Over:

- B-3 Seats
- ECE Fund State Match
- Ready Start Networks

Submit  
reimbursement  
requests ASAP, so  
that nothing needs  
to be done during  
holiday breaks.

Resource: [Allowable Uses of Funds for 2022-2023 Allocations](#)



# Accountability





## Audit Timeline

**January 2**

Child Count Audit &  
Certification Portal  
Opens

**January 2 -  
January 18**

CNLAs work with  
sites to complete  
and finalize the  
audit process

**January 18**

Child Count Audit  
& Certification  
Portal Closes

**January 2 -  
January 31**

LDOE review  
submissions,  
communicate  
changes via the  
responses tab, and  
approves data

**Reminder:** The LDOE will utilize the “Responses” tab via the Child Count Audit and Certification portal to communicate with CNLAs. Users can respond to a comment from the LDOE under “New Response”, add attachments, or simply “Acknowledge Response(s)” once the issue has been resolved.

## 2021-2022 Performance Profiles

- 2021-2022 Performance Profiles can be found in the FTP, under “Performance Profile” in the “2021-2022” folder.
- Informational metrics were collected from the EC Portal and verified by CNLAs during Data Certification.
- Community Network Lead Agencies are encouraged to share performance ratings to Type III centers in advance of Star Rating publication in January 2023.
- Performance Profiles will be released via [School and Center Finder](#) later this month.

Please contact [earlychildhood@la.gov](mailto:earlychildhood@la.gov) with any questions or concerns.



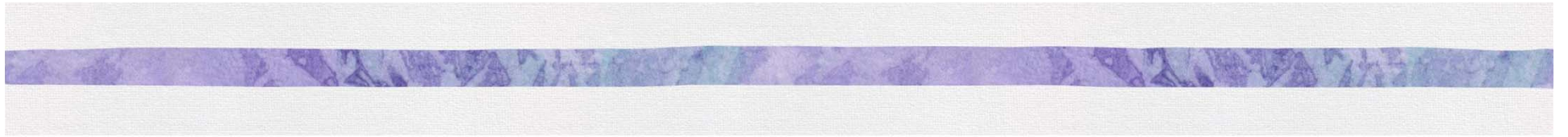
# Fall 2022 Observation Completion

*Community Network Lead Agencies should plan to have all CLASS® observations reported by December 15, 2022, the deadline for the Fall Observation Period.*

- Community Network Lead Agencies are responsible for observing all classrooms open on October 1, 2022, including FCCs with Academic Approval.
- Network administrators can receive updates on observation completion via the “Reports” section of the [EC Portal](#) “System Level Reports” including information on observations that are completed, planned, and missing.

Please contact [sonia.fields-gutierrez@la.gov](mailto:sonia.fields-gutierrez@la.gov) with any questions.





## Upcoming Events



## 2023 Winter Collaboratives

This year Winter Collaboratives will focus on cross-agency collaboration.

In order to ensure that all agencies serving the same communities are in attendance at the same sessions, the Department has assigned CNLAs to one of two locations based on geographic location and partnering CCR&R agency.



Location	When and Where
Baton Rouge, Claiborne Building 1201 N. Third Street, Baton Rouge, LA 70802	January 24, 9:00am- 12:00pm
Rapides, Rapides Parish School Board Media Center Rapides Parish School Board: 619 6th St, Alexandria, LA 71301	January 26, 9:00am- 12:00pm



## 2023 Winter Collaborative Baton Rouge Participants - January 24

Agenda for Children	VOA 2, 3, 4	VOA 5, 6, 7
Assumption Orleans Jefferson Lafourche Plaquemines St. Tammany St. John St. James St. Charles Terrebonne St. Bernard Washington	Ascension East Baton Rouge East Feliciana Iberville Livingston St. Helena Tangipahoa West Baton Rouge West Feliciana	Acadia Allen Calcasieu Cameron Iberia Jefferson Davis St. Landry St. Martin St. Mary Vermilion
	On Track by 5	PCECC
	Lafayette	Pointe Coupee

## 2023 Winter Collaborative Rapides Participants - January 26

NSU	Children's Coalition	VOA 5, 6, 7
Bossier Bienville Caddo Catahoula Claiborne Concordia Desoto Grant Lasalle Jackson Red River Sabine Natchitoches Winn Webster	Caldwell East Carroll Franklin Lincoln Madison Morehouse Ouachita Richland Tensas Union West Carroll	Avoyelles Beauregard Evangeline Rapides Vernon



## GOLD® Update Webinars

*The Department will host GOLD® update webinars for site leaders and network leaders. Participants can access the GOLD® informational webinar using the information below.*

**Webinar Topic:** GOLD® Update Webinar for Network Administrators

**Webinar Date/Time:** Wednesday, January 18 at 1 p.m.

**Webinar Link:** <https://ldoe.zoom.us>

**Meeting ID:** 974 0485 0210

**Passcode:** 980775

Please read the Department's updated [TS GOLD® Guidance](#) and [TS GOLD® FAQ](#) documents for helpful information.

Please contact [ecassessment@la.gov](mailto:ecassessment@la.gov) with questions or concerns.

# Young Children With Disabilities Community of Practice Webinar

*The Department will host YCWD webinars for OSEP Administrators and early childhood administrators each month.*

Participants can access the YCWD Community of Practice webinar using the information below.

**Webinar Topic:** Louisiana's Educational Rights of Children with Disabilities

**Webinar Date/Time:** Wednesday, December 14 at 2:00 p.m.

**Webinar Link:** <https://zoom.us/j/6920610085?>

**Meeting ID:** 692 061 0085

**Passcode:** gyiy3F

Please contact [caitlyn.robinson@la.gov](mailto:caitlyn.robinson@la.gov) for any questions or concerns.



## 2023-2024 Super App and Believe! Key Dates

Application	Action	Timeline
Planning Materials	LDOE School System Planning Guide & Workbook released Believe! Planning Template & Guidance / Super App released	October 20
Super App	Super App <b>DUE</b>	January 27
Believe!	Believe! application for early childhood lead agencies <b>DUE</b>	January 27 <i>*Correction</i>
Super App & Believe!	LDOE reviews Super App and Believe! submissions and provides feedback on plans and budgets, as necessary	February - March
	Super App and Believe! competitive allocations approved (April BESE)	April
	Super App and Believe! grant period begins	July 1

## 2023-2024 Super App and Believe! Resources

Resource	Purpose
<a href="#">Believe! Early Childhood Planning Template</a>	Community Network Lead Agencies plan and budget resources to meet the needs of program partners and children, contact the EC team members with questions: Category 1 – <a href="mailto:devon.camarota@la.gov">devon.camarota@la.gov</a> Category 2 – <a href="mailto:janet.griggs@la.gov">janet.griggs@la.gov</a> Category 3 – <a href="mailto:brandy.morin@la.gov">brandy.morin@la.gov</a> Category 4 – <a href="mailto:amanda.colon@la.gov">amanda.colon@la.gov</a>
Blueprint <a href="#">Guidance</a> , <a href="#">Workbook</a> , and <a href="#">Suggested Template</a>	Support the development and reevaluation of the community network blueprint, contact <a href="mailto:brandi.crowell@la.gov">brandi.crowell@la.gov</a> with questions.
<a href="#">Coordinated Funding Request</a>	Streamlines the CNLA request for B-3, LA 4, and NSECD seats by funding source, contact <a href="mailto:kishia.grayson@la.gov">kishia.grayson@la.gov</a> with questions.
<a href="#">Overview of Early Childhood Funding Sources</a>	List funding sources specific to early childhood and eligibility criteria
<a href="#">2023-2024 School System Planning Guide</a>	School systems plan and budget resources to meet the needs of all students



## 2023-2024 Super App and Believe! Resources and Vendor Guides

- The [Partnerships for Success Guide](#) identifies a list of partners that can provide professional development to build the capacity of educators to deliver specialized supports and organizations that can fulfill the direct service needs to support students with disabilities. Organizations denoted with the Early Childhood icon provide targeted professional development opportunities for early childhood educators in delivering specialized supports to children with disabilities.
- [Academic Content Professional Development Vendor Guide](#) identifies vendors who provide initial and ongoing training for Tier 1 curricula. It identifies vendors who specialize in helping design a cohesive implementation process focused on high-quality curriculum, professional development, and assessment.
- The [Supporting Early Learning & Literacy PD Guide](#) provides networks with a list of partners that can deliver professional development to develop the capacity of educators to effectively identify and support the early learning and literacy needs of children.
- [Strategies for Success Guidebook: A Guidebook for Supporting Students with Disabilities](#)



## Events and Deadlines

**December 14:** YCWD: Community of Practice [Webinar](#)

**December 15:** Report Fall CLASS® Observation in the [EC Portal](#)

**December 20:** Office Hours Canceled

**December 27:** Office Hours Canceled

**January 18:** GOLD Updates [Webinar](#)

**January 24:** Baton Rouge Winter Collaboration

**January 26:** Rapides Winter Collaboration

**January 27:** Super App and Believe! [Application](#)

To find previous Office Hours presentations go to [Louisianabelives.com](http://Louisianabelives.com), visit the [Lead Agency Library](#) and click a download box called "Early Childhood Lead Agency Webinars."

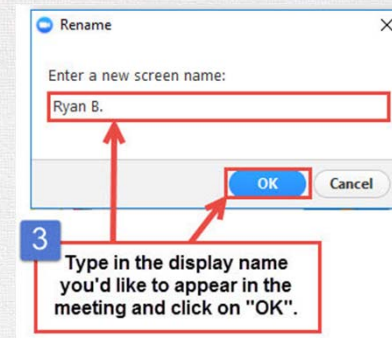
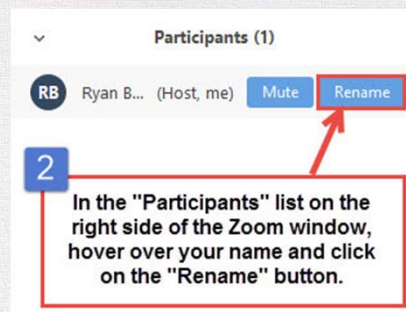
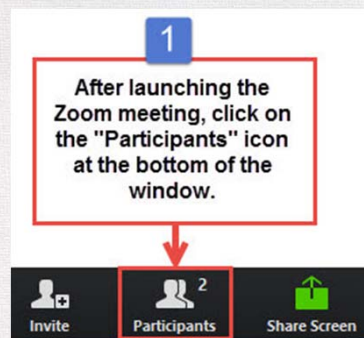




## NEW Zoom Name Change

### Network and Name

1. Click on the "Participants" button at the top of the Zoom window.
2. Hover the mouse over your name in the "Participants" on the right of the Zoom window. Click on "Rename."
3. Enter your **network name and name** (ex.: **Calcasieu Michelle Joubert**) so it will appear in the Zoom meeting and click on "OK."



# Early Childhood Lead Agency Office Hours

December 13, 2022

## Agenda

- Early Childhood Updates
- Accountability
- Young Children with Disabilities
- Director Updates
- Upcoming Events







# Early Childhood Updates

A stylized fleur-de-lis graphic is positioned on the left side of the slide. It features three petals: a purple petal at the top, a green petal on the left, and a gold petal on the right. The petals are layered, with the purple petal in front of the others. The central stem is dark blue with two small horizontal lines near the base. The entire graphic is set against a light gray background band at the bottom of the slide.

# Early Childhood Allocations

## Spending Down Roll-Over and PDG Funds

*This is a reminder that **all** PDG funds need to be drawn down by December 31, 2022, as well as CRRSA roll-over from the 2021-2022 fiscal year. Anything **not** drawn down will **not** roll over.*

### Initiatives Impacted by PDG Funds:

- B-3 Seats
- Ready Start Networks
- EC Guides
- Family Child Care Pilot (roll-over)

### Initiatives impacted by CRRSA Roll-Over:

- B-3 Seats
- ECE Fund State Match
- Ready Start Networks

Submit reimbursement requests ASAP, so that nothing needs to be done during holiday breaks. This is new PDG money and Roll-over PDG money.

Resource: [Allowable Uses of Funds for 2022-2023 Allocations](#)



## 12/31/22 Spend Down FAQ

1. Are you referring to the PDG Funds that have rolled over from last fiscal year or new from this year?

*We are referring to all PDG funding, both rollover from 2021-2022 and newly awarded funds from July 1, 2022.*

2. When is the last day to submit the reimbursement for the December enrollment payment?

*LEAs can submit reimbursement requests up until 12/31/2022. Ideally, the LDOE would like for these to be submitted ASAP so they can be approved/rejected in a timely manner prior to 12/31/2022 and so that you can have no delays in your Quarter 2 PER that will open after 12/31/2022.*

3. Will there be B-3 funding for 2023-24?

*In October, the Department released the 2022-2023 Coordinated Funding Request, which stated there are currently very limited monies available for B-3 Seats in the 2023-24 academic year; please enter the number of seats you would like to request, and the Department will use this request to make decisions with the available funds. **Please remember that B-3 Seats and PDG funds are two separate things. B-3 Seats pilot is an initiative, PDG is a federal funding source that supports many activities, including B-3 Seats.***



## 12/31/22 Spend Down FAQ

**4. Is there PDG funding for the Believe! Grant (Category 1 and Category 3) that needs to be spent by 12/30/22?**

*There is no PDG funding involved in the Believe! Grant at this time. The Believe! funds are not affected by the 12/31/2022 deadline.*

**5. What will I see in eGMS after the 12/31/2022 deadline for any PDG activity?**

*LEAs will still see the PDG-impacted activity (Ready Start Networks, EC Guides, B-3 Seats, and Family Child Care Pilot) with the funding so that they can complete the 12/31/2022 PER, which becomes available on 12/31/2022. The LDOE asks for those to be submitted within 15 days of that opening date. PERs must be submitted before additional reimbursement requests in the subsequent quarter (ex: LEA must submit 12/31/22 PER in order to submit reimbursements for the activity in January 2023).*

*Once the PER is submitted and approved by the LDOE, the new funding total will appear, and for anything funded with PDG, that balance will change to \$0. This is the same process that LEAs have experienced with other funding sources that “expired” at the end of the fiscal or calendar year. Additional guidance will be provided on completing the PER in early January, and individualized support can be requested by reaching out to [devon.camarota@la.gov](mailto:devon.camarota@la.gov) regarding the PDG grant and rollover.*



## 12/31/22 Spend Down FAQ

### 6. How was this deadline communicated to impacted Ready Start Networks?

*The requirement for the PDG spending deadline was communicated in the following ways:*

- *All B-3 Kick-off webinars, beginning March 23 through May*
- *B-3 Seats Planning Document*
- *B-3 Seats Office Hours*
- *Lead Agency Office Hours on August 30, September 6, and September 20*
- *Email from LDOE employees on September 1 and November 22*
- *Lead Agency Office Hours on December 6*



# Accountability





## Audit Timeline

**January 2**

Child Count Audit &  
Certification Portal  
Opens

**January 2 -  
January 18**

CNLAs work with  
sites to complete  
and finalize the  
audit process

**January 18**

Child Count Audit  
& Certification  
Portal Closes

**January 2 -  
January 31**

LDOE review  
submissions,  
communicate  
changes via the  
responses tab, and  
approves data

**Reminder:** The LDOE will utilize the “Responses” tab via the Child Count Audit and Certification portal to communicate with CNLAs. Users can respond to a comment from the LDOE under “New Response”, add attachments, or simply “Acknowledge Response(s)” once the issue has been resolved.

## 2021-2022 Performance Profiles

- Community Network Lead Agencies are encouraged to share the [Performance Profile FAQ](#) document with all providers.
- Performance Profile PDFs will be released via [School and Center Finder](#) later this month.

Please contact [earlychildhood@la.gov](mailto:earlychildhood@la.gov) with any questions or concerns.

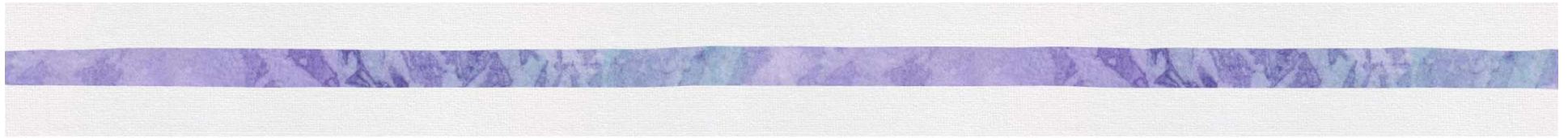


# Fall 2022 Observation Completion

*Community Network Lead Agencies should plan to have all CLASS® observations reported by December 15, 2022, the deadline for the Fall Observation Period.*

- Community Network Lead Agencies are responsible for observing all classrooms and FCC Sites with Academic Approval on October 1, 2022.
- Network administrators can receive updates on observation completion via the “Reports” section of the [EC Portal](#) “System Level Reports” including information on observations that are completed, planned, and missing.
- Community Network Lead Agencies should plan to conduct Spring 2023 observations per Bulletin 140.

Please contact [earlychildhood@la.gov](mailto:earlychildhood@la.gov) with any questions.



## Upcoming Events





## 2023 Winter Collaboratives

This year Winter Collaboratives will focus on cross-agency collaboration.

In order to ensure that all agencies serving the same communities are in attendance at the same sessions, the Department has assigned CNLAs to one of two locations based on geographic location and partnering CCR&R agency.



Location	When and Where
Baton Rouge, Claiborne Building 1201 N. Third Street, Baton Rouge, LA 70802	January 24, 9:00am- 12:00pm
Rapides, Rapides Parish School Board Media Center Rapides Parish School Board: 619 6th St, Alexandria, LA 71301	January 26, 9:00am- 12:00pm

## 2023 Winter Collaborative Baton Rouge Participants - January 24

Agenda for Children	VOA 2, 3, 4	VOA 5, 6, 7
Assumption Orleans Jefferson Lafourche Plaquemines St. Tammany St. John St. James St. Charles Terrebonne St. Bernard Washington	Ascension East Baton Rouge East Feliciana Iberville Livingston St. Helena Tangipahoa West Baton Rouge West Feliciana	Acadia Allen Calcasieu Cameron Iberia Jefferson Davis St. Landry St. Martin St. Mary Vermilion
	On Track by 5	PCECC
	Lafayette	Pointe Coupee



## 2023 Winter Collaborative Rapides Participants - January 26

NSU	Children's Coalition	VOA 5, 6, 7
Bossier Bienville Caddo Catahoula Claiborne Concordia Desoto Grant Lasalle Jackson Red River Sabine Natchitoches Winn Webster	Caldwell East Carroll Franklin Lincoln Madison Morehouse Ouachita Richland Tensas Union West Carroll	Avoyelles Beauregard Evangeline Rapides Vernon

# 2023 Winter Collaborative

In order to prepare for the Winter Collaboratives, please complete the following [survey](#) to RSVP. This link was also emailed on December 9 before 6 p.m.

1

Anyone on your team who is involved in collaborative efforts that impact providers and children, such as:

CNLA	CCR & R
<ul style="list-style-type: none"><li>● Community Network Lead Agency contact</li><li>● Education Manager</li><li>● Support staff for Family Child Care</li><li>● Specific grant or program manager (i.e. B-3 Seats)</li></ul>	<ul style="list-style-type: none"><li>● Director</li><li>● Coaching manager</li><li>● FCC coach</li></ul> <p><i>*Please assign different people to represent the CNLA and CCR&amp;R if the entity represents both the CNLA and CCR&amp;R</i></p>



## Slide 16

---

- 1 @devon.camarota@la.gov just flagging this because I think I remember you working on this slide  
Sonia Fields-Gutierrez, 12/12/2022
- 1 Thank you! Just updated  
Devon Camarota, 12/12/2022

# GOLD® Update Webinars

*The Department will host GOLD® update webinars for site leaders and network leaders. Participants can access the GOLD® informational webinar using the information below.*

**Webinar Topic:** GOLD® Update Webinar for Network Administrators

**Webinar Date/Time:** Wednesday, January 18 at 1 p.m.

**Webinar Link:** <https://ldoe.zoom.us>

**Meeting ID:** 974 0485 0210

**Passcode:** 980775

Please read the Department's updated [TS GOLD® Guidance](#) and [TS GOLD® FAQ](#) documents for helpful information.

Please contact [ecassessment@la.gov](mailto:ecassessment@la.gov) with questions or concerns.



# Young Children With Disabilities Community of Practice Webinar

*The Department will host YCWD webinars for OSEP Administrators and early childhood administrators each month.*

Participants can access the YCWD Community of Practice webinar using the information below.

**Webinar Topic:** Louisiana's Educational Rights of Children with Disabilities

**Webinar Date/Time:** Wednesday, December 14 at 2:00 p.m.

**Webinar Link:** <https://zoom.us/j/6920610085?>

**Meeting ID:** 692 061 0085

**Passcode:** gyiy3F

Please contact [caitlyn.robinson@la.gov](mailto:caitlyn.robinson@la.gov) for any questions or concerns.

## 2023-2024 Super App and Believe! Key Dates

Application	Action	Timeline
Planning Materials	LDOE School System Planning Guide & Workbook released Believe! Planning Template & Guidance / Super App released	October 20
Super App	Super App <b>DUE</b>	January 27
Believe!	Believe! application for early childhood lead agencies <b>DUE</b>	January 27 <i>*Correction</i>
Super App & Believe!	LDOE reviews Super App and Believe! submissions and provides feedback on plans and budgets, as necessary	February - March
	Super App and Believe! competitive allocations approved (April BESE)	April
	Super App and Believe! grant period begins	July 1



## 2023-2024 Super App and Believe! Resources

Resource	Purpose
<a href="#">Believe! Early Childhood Planning Template</a>	Community Network Lead Agencies plan and budget resources to meet the needs of program partners and children, contact the EC team members with questions: Category 1 – <a href="mailto:devon.camarota@la.gov">devon.camarota@la.gov</a> Category 2 – <a href="mailto:janet.griggs@la.gov">janet.griggs@la.gov</a> Category 3 – <a href="mailto:brandy.morin@la.gov">brandy.morin@la.gov</a> Category 4 – <a href="mailto:amanda.colon@la.gov">amanda.colon@la.gov</a>
Blueprint <a href="#">Guidance</a> , <a href="#">Workbook</a> , and <a href="#">Suggested Template</a>	Support the development and reevaluation of the community network blueprint, contact <a href="mailto:brandi.crowell@la.gov">brandi.crowell@la.gov</a> with questions.
<a href="#">Coordinated Funding Request</a>	Streamlines the CNLA request for B-3, LA 4, and NSECD seats by funding source, contact <a href="mailto:kishia.grayson@la.gov">kishia.grayson@la.gov</a> with questions.
<a href="#">Overview of Early Childhood Funding Sources</a>	List funding sources specific to early childhood and eligibility criteria
<a href="#">2023-2024 School System Planning Guide</a>	School systems plan and budget resources to meet the needs of all students

## 2023-2024 Super App and Believe! Resources and Vendor Guides

- The [Partnerships for Success Guide](#) identifies a list of partners that can provide professional development to build the capacity of educators to deliver specialized supports and organizations that can fulfill the direct service needs to support students with disabilities. Organizations denoted with the Early Childhood icon provide targeted professional development opportunities for early childhood educators in delivering specialized supports to children with disabilities.
- [Academic Content Professional Development Vendor Guide](#) identifies vendors who provide initial and ongoing training for Tier 1 curricula. It identifies vendors who specialize in helping design a cohesive implementation process focused on high-quality curriculum, professional development, and assessment.
- The [Supporting Early Learning & Literacy PD Guide](#) provides networks with a list of partners that can deliver professional development to develop the capacity of educators to effectively identify and support the early learning and literacy needs of children.
- [Strategies for Success Guidebook: A Guidebook for Supporting Students with Disabilities](#)



## Events and Deadlines

**December 14:** YCWD: Community of Practice [Webinar](#)

**December 15:** Report Fall CLASS® Observation in the [EC Portal](#)

**December 20 & 27:** Office Hours Canceled

**December 31:** PDG funds spent and submit final reimbursement requests

**January 18:** GOLD Updates [Webinar](#)

**January 24:** Baton Rouge Winter Collaboration (canceled Office Hours)

**January 26:** Rapides Winter Collaboration

**January 27:** Super App and Believe! [Application](#)

To find previous Office Hours presentations go to [Louisianabelives.com](http://Louisianabelives.com), visit the [Lead Agency Library](#) and click a download box called "Early Childhood Lead Agency Webinars."



 **Believes**