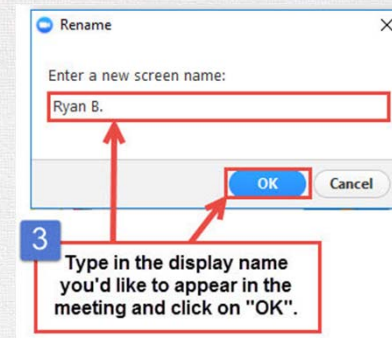
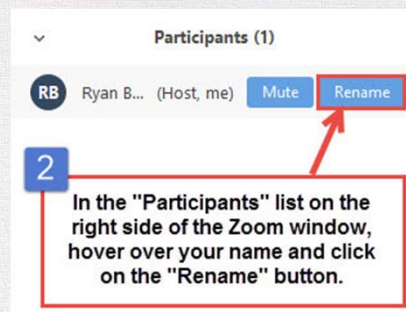
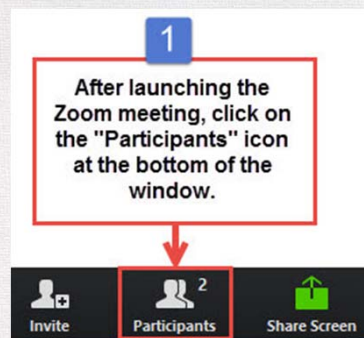


## NEW Zoom Name Change

### Network and Name

1. Click on the "Participants" button at the top of the Zoom window.
2. Hover the mouse over your name in the "Participants" on the right of the Zoom window. Click on "Rename."
3. Enter your **network name and name** (ex.: **Calcasieu Michelle Joubert**) so it will appear in the Zoom meeting and click on "OK."





# Early Childhood Lead Agency Office Hours

October 4, 2022

## Agenda



- Release of Coordinated Enrollment
- Completing the Coordinated Enrollment Plan Template
- Early Childhood Reminders
- Developmental Screening Initiative Update
- Accountability
- Upcoming Events



## **Coordinated Enrollment Overview**





# Coordinated Enrollment Components

*The Louisiana legislature enacted Act 3 to design community networks and defined coordinated enrollment which required all communities to implement each component.*

- 1. Coordinate Information: Families know of all available seats**
  - *Inform families about the availability of publicly-funded programs*
- 2. Coordinate Eligibility: Families easily know what programs they qualify for**
  - *Ensure families are referred to available publicly-funded programs*
- 3. Coordinate Applications: Families apply to all programs through one application**
  - *Collect family preferences regarding enrollment choices*
- 4. Match Based on Preference: Families enroll their child in the highest ranked preference available**
  - *Enroll children based on family preference so no one occupies more than one seat*

## Impact of Coordination of Enrollment

- Families and community members have a better understanding of quality care.
- Families can see what early childhood programs are available in their community.
- Parents have an easy way to understand their eligibility for programs and enroll their children.
- Families' stress is alleviated through streamlining the access and enrollment process.

LDOE Program Monitoring team ensures consistency

Legislative auditors require Coordinated Enrollment Plans and supporting documentation for Bulletin 140 program audits



# Coordinated Enrollment Model

## Coordinated Information Campaign

*Work together to inform families about early childhood programs in the community*

- Collaborate to ensure access to information year-round
- Conduct an on-the-ground information campaign
- Institute a “No Wrong Door” approach by sharing information in-person, online and paper as appropriate

## Coordinated Eligibility Determination

*Create one way for families to know what they qualify for and one year-round process to refer families to other available programs when they do not qualify or no seats are available*

- Understand program & funding eligibility requirements
- Determine eligibility using DirectMatch with a unified application and develop a community referral system

## Coordinated Applications

*Create a unified application used by all programs to collect family preferences*

- Guide families through options based on eligibility
- Designate choices on one application during open enrollment period
- Coordinate application and enrollment timelines across all programs year-round

## Matching Based on Preference

*Enroll at-risk children based upon where families prefer to send their children, as long as space is available*

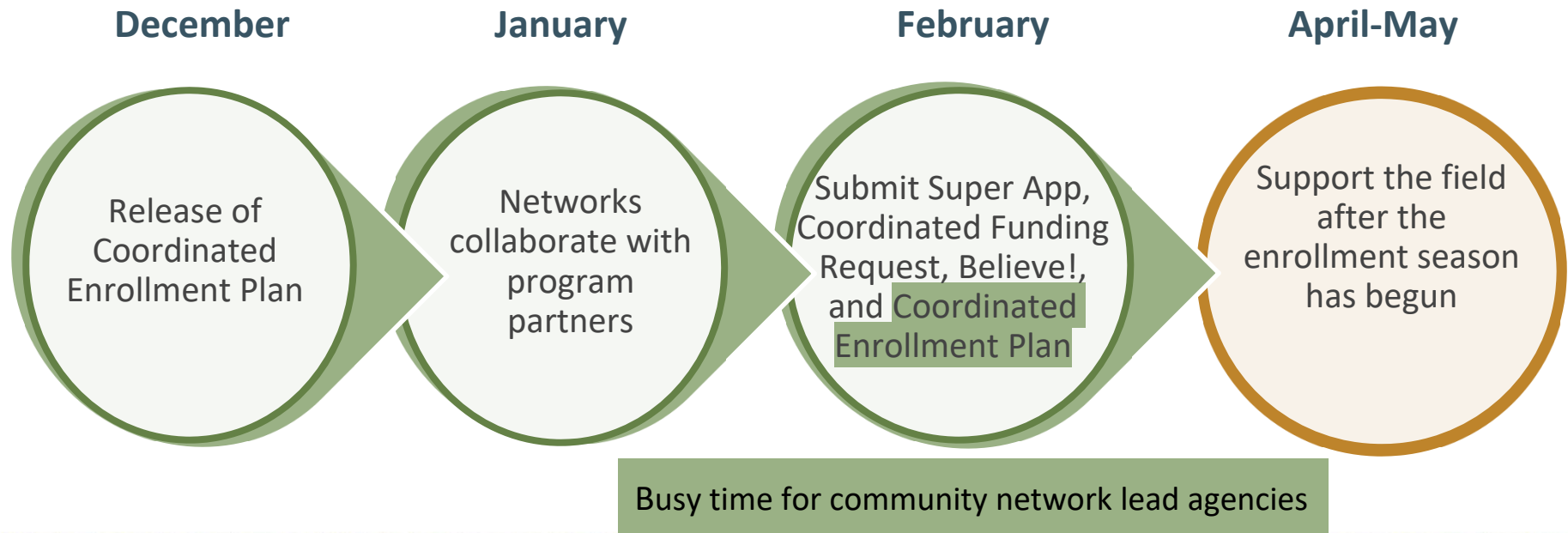
- Admit families according to their preference and the capacity of programs
- Provide enrollment options throughout the year
- Collaborate on management of a community waitlist

## Coordinated Family Support

Community network lead agencies support and empower families with young children. Provide families opportunities to learn about early childhood education, community resources, and child development to empower families to support their children’s learning and development.



## Previous CEP Timeline



## New CEP Timeline

**October 4, 2022**

Release  
Coordinated  
Enrollment Plan

**Oct. - Nov.**

Networks  
collaborate with  
program  
partner

**December 1, 2022**

Coordinated  
Enrollment  
Plans due via  
Jotform

**Feb - March**

Support the field  
before and at the  
beginning of the  
enrollment season

Provide more timely enrollment  
support activities, webinars,  
support docs and income guidelines



# Coordinated Enrollment Planning Sequence

## Blueprint

*Establishes mission, vision, and goals*



## Coordinated Funding Request

*Allocates resources according to local needs and family choice*



## Super App

*Applies for funding and communicates local priorities*



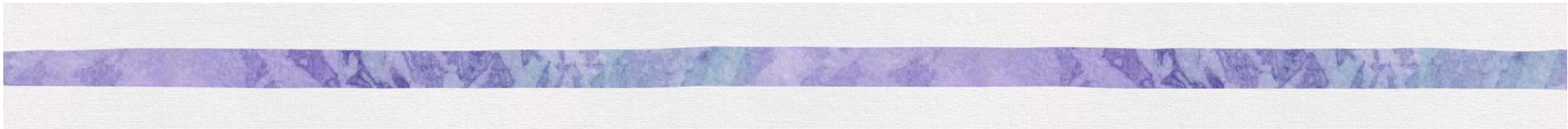
## Self-Assessment from Previous Coordinated Enrollment

*Evaluates and reflects for continuous improvement*



## Coordinated Enrollment Plan

*Coordinates and executes the early childhood enrollment process*



## **2023-2024 Coordinated Enrollment Plan**





# 2023-2024 Coordinated Enrollment Plan

## Engaging and Enrolling Families

*Community-wide coordination is an important step in implementing an enrollment process that is efficient and equitable to improve child outcomes in the community.*

When communities are coordinated	When communities are <u>not</u> coordinated
<ul style="list-style-type: none"><li>• Families can easily learn about available seats and determine programs they are eligible for</li><li>• Families can easily apply and there are not undue burdens placed on applicants</li><li>• Children are not enrolled in more than one spot, ensuring more children are able to access available seats</li></ul>	<ul style="list-style-type: none"><li>• Families do not have a primary contact to learn about early childhood programs</li><li>• Families may be placed on a community-wide waitlist for one spot while another spot goes unfilled</li><li>• It is difficult for community network lead agencies to measure true demand and plan to meet families' needs</li></ul>

# 2023-2024 Coordinated Enrollment Plan

## Sections of the Planning Template

Section 1: Maximize System Capacity

Section 2: Informational Campaign

Section 3: Coordinated Eligibility Determination

Section 4: Coordinated Application, Matching, and Registration

Section 5: Coordinated Family Support



# 2023-2024 Coordinated Enrollment Plan

## Section 1: Maximize System Capacity

**Purpose:** Maximizing the capacity of your community's early childhood system is essential to improving access to high quality early education opportunities families experiencing economic disadvantages.

**Actions:** Strengthen review processes of enrollment data to build a system to analyze and make enrollment decisions that maximize capacity.

Collaborate with program partners to understand the community's needs to ensure the most efficient approach in providing families access to high-quality early childhood care and education.

Use the unified application as a data collection tool that integrates funding sources, eligibility criteria, and site capacity to assist with decisions that maximize site/classroom capacity.

# 2023-2024 Coordinated Enrollment Plan

## Section 1: Maximize System Capacity

*Maximizing the capacity of your community's early childhood system is essential to improving access to high quality early education opportunities for economically disadvantaged families.*

When capacity is maximized:	When capacity is <u>not</u> maximized:
<ul style="list-style-type: none"><li>● All funding is used, and seats are entirely filled</li><li>● Hard fought dollars are used as efficiently as possible</li><li>● As many children as possible are in high-quality seats</li><li>● Families have convenient and affordable options that are also high quality</li><li>● More children are prepared to enter kindergarten ready to succeed</li></ul>	<ul style="list-style-type: none"><li>● Funding may not be used as efficiently as possible</li><li>● Families may be placed on multiple waitlists while seats may go unfilled</li><li>● Certain localities in your community may be left without options</li><li>● A surplus of seats for one age group and a lack of seats for another age group</li><li>● Fewer children have experiences in their early childhood that prepare them for success in school</li></ul>



# 2023-2024 Coordinated Enrollment Plan

## Section 2: Informational Campaign

**Purpose:** The informational campaign recruits families, promotes early childhood programs, and raises awareness of the value of early childhood development and learning, benefits for children.

**Actions:** Plan a robust public awareness campaign using strategies that promote provide families with opportunities to learn about

- the local early childhood community network lead agency and early learning options
- the impact of early language and early literacy experiences
- the use of quality ratings to assist when in making child care and pre-K choices
- the importance of learning about developmental milestones, monitoring, and screening opportunities.



# 2023-2024 Coordinated Enrollment Plan

## Section 3: Coordinated Eligibility Determination

**Purpose:** Organize and coordinate the eligibility determination process for families that provides consistency across program types using established eligibility criteria, align the timelines of the programs, create consistent templates and procedures, and identify priority populations.

**Actions:** Networks strengthen data collection procedures for eligibility data and review processes to make placement decisions that based on family choice and eligibility options.

Ensure networks help families learn about the various programs for which they are eligible and that meet their needs.



# 2023-2024 Coordinated Enrollment Plan

## Section 4: Coordinated Application, Matching, and Registration

**Purpose:** Networks coordinate applications, matching families to their preference, and registration, so families have a simple process to find publicly-funded programs that fits the needs of their children.

**Actions:** Streamline the application process for families in order to reduce burdens for families.

Leverage the unified application as a data collection tool to assist with matching families to their preferred site or making referrals (as needed).

Share and align data across providers and program types to streamline the enrollment data-sharing process, strengthen referrals, and the community-wide waitlist.



# 2023-2024 Coordinated Enrollment Plan

## Section 5: Family Support

**Purpose:** Networks support families with young children regardless of a child's enrollment status. Provide families experiences to increase school readiness, early childhood transitions, developmental screenings and supports, and navigate local community resources.

**Actions:** Create ongoing, consistent methods for building trust, engaging and connecting with families by developing conduits to share communicate and information. Families should know how to find information and resources for

- Early childhood care and education options
- Developmental milestones
- Developmental screenings
- Early Intervention
- Early childhood transitions





## **Completing the Coordinated Enrollment Plan**



## Coordinated Enrollment Word Template is for planning with program partners.

DEPARTMENT of  
**EDUCATION**  
Louisiana Believes

Early Childhood

### 2023-2024 COORDINATED ENROLLMENT PLAN TEMPLATE

Community network lead agencies (CNLA) are required to execute a coordinated enrollment process. CNLA will engage all program partners to develop and submit a coordinated enrollment plan to the Louisiana Department of Education that is signed by all program partners.

Read each question and provide a response for each item. Please note there are a variety of answer response formats, including open-response, tables, and select all that apply. Note: If any aspect of the Coordinated Enrollment model will not be in place for families applying and enrolling for 2023-2024, the community network lead agency will need to apply for a Coordinated Enrollment Waiver. If you have questions or need assistance, please contact Amanda Colon at [amanda.colon@la.gov](mailto:amanda.colon@la.gov)

Section 1: Maximize System Capacity  
Section 2: Coordinated Informational Campaign  
Section 3: Coordinated Eligibility Determination  
Section 4: Coordinated Application, Matching, and Registration  
Section 5: Coordinated Family Support

#### PROGRAM PARTNER REVIEW

Include signatures from each program partner demonstrating they have been engaged in the planning process and approve the plan.

#### SECTION 1: MAXIMIZE SYSTEM CAPACITY

Community network lead agencies (CNLA) utilize strategies that maximize available funding sources and increase access to publicly-funded early childhood programs each year. Please plan to use the community network lead agency's data kit to complete the following questions.

1. Complete the table below using enrollment data to inform family demand for publicly-funded early childhood seats in the community. NOTE CNLAs can use current year enrollment data, 2022-2023 Child Count if it has been audited, or the previous year's spring Child Count data.

	Example	Infants	Ones	Twos	Threes	Fours
Number of Applications Received	10					
Number of Families on the Waitlist	0					
Is there an Access Gap? Yes or No	No					



Copy and paste  
responses from  
the Word  
Template into  
Jotform

## Coordinated Enrollment Jotform link is for submitting responses.

DEPARTMENT of  
**EDUCATION**  
Louisiana Believes

Early Childhood

### 2023-2024 Early Childhood Coordinated Enrollment Plan Jotform Submission

Community networks are required to execute a coordinated enrollment process. Lead agencies will engage all program partners to develop and submit a coordinated enrollment plan to the Louisiana Department of Education that is signed by all program partners.

Read each question and provide a response for each item. Please note there are a variety of answer response formats including open-response, tables, and select all that apply.

Note: If any aspect of the Coordinated Enrollment model will not be in place for families applying and enrolling for 2022-2023, the network will need to apply for a Coordinated Enrollment Waiver. If you have questions or need assistance, please contact Amanda Colon at [amanda.colon@la.gov](mailto:amanda.colon@la.gov)

Section 1: Maximize System Capacity  
Section 2: Informational Campaign  
Section 3: Coordinated Eligibility Determination  
Section 4: Coordinated Application, Matching, and Registration  
Section 5: Coordinated Family Support

Enter your name: \*

First Name Last Name

Enter your email address or the best contact email address for the lead agency: \*



# Completing the Coordinated Enrollment Plan

## Section 1 Sample Question

### SECTION 1: MAXIMIZE SYSTEM CAPACITY

Community network lead agencies (CNLAs) utilize strategies that maximize available funding sources and increase access to publicly-funded early childhood programs each year. Please plan to use the community network lead agency's data kit to complete the following questions.

1. **Complete the table below using enrollment data to inform family demand for publicly-funded early childhood seats in the community.** NOTE CNLAs can use current year enrollment data, 2022-2023 Child Count if it has been audited, or the previous year's spring Child Count data.

	<i>Example</i>	<b>Infants</b>	<b>Ones</b>	<b>Twos</b>	<b>Threes</b>	<b>Fours</b>
Number of Applications Received	<i>10</i>					
Number of Families on the Waitlist	<i>0</i>					
Is there an Access Gap? Yes or No	<i>No</i>					

# Completing the Coordinated Enrollment Plan

## Section 2 Sample Question

### SECTION 2: COORDINATED INFORMATIONAL CAMPAIGN

*Networks implement a coordinated public awareness campaign that informs families about the early childhood care and education options and availability of publicly-funded programs, family engagement opportunities, support for learning at-home, and support for diverse learners.*

**8. Briefly describe the community network's informational campaign to promote and provide public awareness for the early childhood community network, child care options, the importance of and benefits of early childhood learning, and enrollment. Include the following:**

- Public awareness goals, media/methods, and timeline (TV ads, newspaper ads, digital ads, and print)
- Describe the content of campaign materials and ads
- Provide a brief description, event location, and list of program partners and community expected to be involved

**DOCUMENT UPLOAD SECTION** for informational materials planned for the 2022-2023 year to increase public awareness of the early childhood programs (e.g. enrollment brochures, parent guide, eligibility checklist, newspaper/TV/radio advertisements, social media messages, etc.). *NOTE: This section is a placeholder for what to expect on the Jotform.*



# 2023-2024 Coordinated Enrollment Plan

## Section 5: Family Support

30. The Department launched the Developmental Screening Initiative in 2021. Various data is necessary to monitor and evaluate the statewide impact of developmental screenings on child outcomes.

Number of children screened using a developmental screener.	
Number of children who were <i>at-risk</i> in one or more developmental domains.	
Out of the children determined <i>at-risk</i> , how many were referred for a formal evaluation?	
Out of the children determined <i>at-risk</i> , how many families denied a formal evaluation?	
Out of the children <i>referred for evaluation</i> , how many children were identified as needing additional services?	

# 2023-2024 Coordinated Enrollment Plan

## Section 5: Family Support



24. Please provide current contact information for the following family resources and contacts in the early childhood community network. *NOTE. This information is used to update the community network lead agency's profile information on the Network Resources map on [www.louisianabelieves.com](http://www.louisianabelieves.com)*

- 24a. Early Childhood Community Network website's link (URL address)
- 24b. Early Childhood Community Network Coordinated Enrollment application link (URL address)
- 24c. Early Steps Coordinator contact
- 24d. Child Find/Child Search contact
- 24e. Tulane or Mental Health Consultations (TIKES) contact





# Updates Louisiana Network Resource Finder

Digital access will be available by network to locate the following resources:

- Customized Learn the Signs. Act Early brochures and Milestone Checklists
- Lead Agency Contact Information
- CCR&R Regional Contacts
- Head Start Contact List
- EC Community Network Website
- EC Community Coordinated Enrollment Application





<p><b>Learn the Signs. Act Early. (LTSAE)</b> is a federally mandated program of the Centers for Disease Control and Prevention (CDC) that encourages parents of children ages birth to 5 years and providers who care for them to:</p> <ul style="list-style-type: none"> <li>• learn the signs of healthy development</li> <li>• monitor every child's early development; and</li> <li>• act early on possible developmental concerns: talk with doctors and ask for developmental screening.</li> </ul>	<a href="#">Richland Ready Start Network Learn the Signs. Act Early PDF</a>
<p><b>Early Childhood Community Network Lead Agencies</b> provide families information about early care and education options for families, Description here (plain language)</p>	<a href="#">Early Childhood Community Network Lead Agency Contact Information</a>
<p><b>Child Care Resource and Referral (CCR&amp;R)</b> agencies assist families with finding and evaluating child care, connect families to local resources, and provide training, coaching, and technical assistance to child care providers.</p>	<a href="#">CCR&amp;R Agency Regional Contacts</a>
<p><b>Head Start</b> is a Federal program that promotes the school readiness of children ages birth to five from low-income families through comprehensive preschool programming.</p>	<a href="#">Head Start Contact List</a>
<p><b>Early Childhood Community Network Website</b> can provide information on early childhood programs and program partners, eligibility requirements and additional enrollment information.</p>	<a href="#">Richland Ready Start Network (external link)</a>
<p><b>Coordinated Enrollment</b> is the application link to enroll children in early childhood programs (school based Pre-K and charter, child care, Head Start).</p>	<a href="#">Richland Ready Start Network Coordinated Enrollment Application (external link)</a>



**Learn the Signs. Act Early.**

Learn the signs of your child's development and act early if you ever have a concern.

To complete a milestone checklist, download CDC's **FREE Milestone Tracker** app or visit [cdc.gov/Milestones](http://cdc.gov/Milestones), and talk to your child's doctor at every well-child visit about the milestones your child has reached and what to expect next.

**YOU KNOW YOUR CHILD BEST.**

If your child is not meeting milestones or you are concerned about the way your child plays, learns, speaks, acts, or moves, talk with your child's doctor, share your concerns, and ask about developmental screening. Don't wait.

If you or the doctor is still concerned

1. Ask for a referral to a specialist and,
2. Call for a free evaluation to find out if your child can get services to help:

- If your child is under age 3: Call your state or territory's early intervention program. Learn more and find the phone number at [cdc.gov/FindEI](http://cdc.gov/FindEI).
- If your child is age 3 or older: Call any local public elementary school.

For more on how to help your child, visit [cdc.gov/Concerned](http://cdc.gov/Concerned).

**DON'T WAIT.**  
Acting early can make a real difference!

For more information about your child's development and what to do if you have a concern:

**Child Find (3+ years):**  
318-603-6873

**Early Steps (birth-3 years):**  
318-741-7483

to get help finding resources in your area.

Learn the Signs. Act Early.  
Centers for Disease Control and Prevention  
[www.cdc.gov/actearly](http://www.cdc.gov/actearly)  
1-800-458-5231

Developmental milestones adopted from: Center for Your Baby and Young Child: Birth to Age 5 (AAP, 2009) and Bright Futures: Guidelines for Health Supervision of Infants, Children, and Adolescents (AAP, 2009).

**Track Your Child's Developmental Milestones**

**CADDO SmartStart**

**Milestones Matter!**  
How your child plays, learns, speaks, acts, and moves offers important clues about his or her development.

DEPARTMENT of EDUCATION Louisiana Believes  
DEPARTMENT of HEALTH

Download CDC's Milestone Tracker App

**Learn the Signs. Act Early.**



# Program Partner Signatures

## PROGRAM PARTNER SIGNATURES

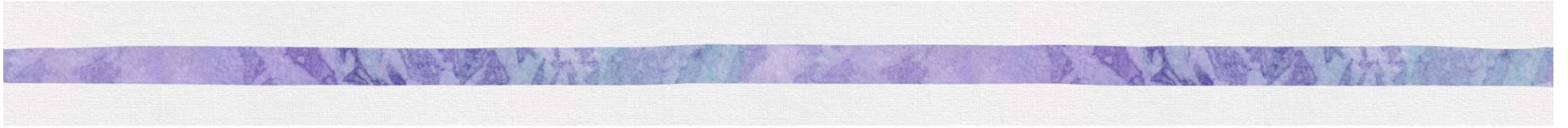
Include signatures from each program partner demonstrating they have been engaged in the planning process and approve the plan.

**DOCUMENT UPLOAD SECTION** Please provide program partner signatures to indicate their engagement in the planning process and approval of the 2023-2024 Coordinated Enrollment Plan. Other acceptable documentation are *digital signatures* and emails from program partners stating approval of plan.



**Program Partner Review:** Include signatures from each program partner demonstrating they have been engaged in the planning process and approve the plan. Add lines as necessary.

Program Type (e.g. Head Start, Early Head Start, child care, school, charter):	Site Name:	Signature:



## Timeline and Dates





# Coordinated Enrollment Planning

## Important Dates

Date	Events
October 4	LDOE releases Coordinated Enrollment Plan Template (PDF) version for planning and collaboration
October 11	Release Jotform link of the Coordinated Enrollment Plan during Office Hours
December 2	Submit Coordinated Enrollment Plan via Jotform by close of business

For questions contact [amanda.colon@la.gov](mailto:amanda.colon@la.gov)

# Early Childhood Updates







## Young Children with Disabilities

# Inclusion Initiative

## Conscious Discipline Training

*The LDOE is developing next steps to support networks in building capacity to assist educators in supporting inclusion for young students with disabilities.*

**The Department has purchased 10 trainings from Conscious Discipline.**

Conscious Discipline provides an array of behavior management strategies and classroom structures that teachers can use to turn everyday situations into learning opportunities.

### **Details:**

- 1-day, 6-hour in-person training from 8:30 a.m. - 3:30 p.m.
- 150 participants per training (several networks/LEAs together)
- The dates that we have been given include:
  - November 14, 15, 21, 22
  - December 5, 6, 12, 13, 14, 15

### **Audience:**

- Teachers who teach students with disabilities in their classrooms
- Special Education teachers
- Paraprofessionals who work with students with disabilities



# Inclusion Initiative

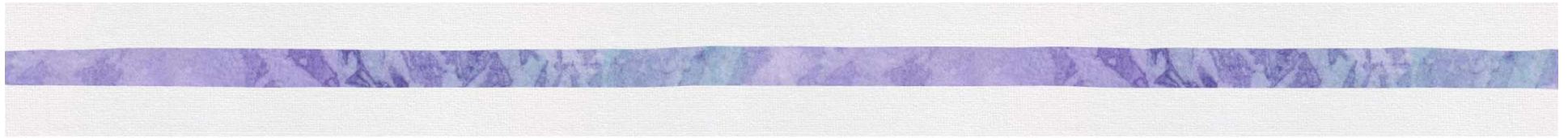
## Conscious Discipline Training

The Department is asking for sites around the state to volunteer to host this training. Conscious Discipline is asking that we select sites that are close enough to drive to from one day to the next. (e.g., training that takes place on November 14 must be drivable distance to the training that takes place on November 15.

### **Volunteer sites must provide:**

- Space for 150 participants
- Mobile wireless hands free microphone
- Screen or a white wall visually accessible to the entire audience
- LCD Projector Public address system with ability to hook laptop and LCD projector into sound system with necessary power cords
- Small Table to hold all AV equipment
- No podium Two (2) tables at least 4ft x 6ft on stage

If you are interested in hosting one of these trainings, please fill out the Google form [here](#). If you have any questions, please contact [Caitlyn.Robinson@la.gov](mailto:Caitlyn.Robinson@la.gov).



## Upcoming Events







## 2022 Fall Collaboratives

This year Fall Collaboratives will focus on cross-agency collaboration.

In order to ensure that all agencies serving the same communities are in attendance at the same sessions, the Department has assigned CNLAs to one of two locations based on geographic location and partnering CCR&R agency.

Location	When and Where
Baton Rouge, Claiborne Building	Tuesday, October 25, 9-12 p.m.
Rapides, Rapides Parish School Board Instructional	Thursday, October 27, 9-12 p.m.

## 2022 Fall Collaborative

### Baton Rouge Participants - October 25

Agenda for Children	VOA 2, 3, 4	VOA 5, 6, 7
Orleans Jefferson St. Bernard Plaquemines Washington St. Tammany St. John St. James St. Charles Lafourche Assumption Terrebonne	East Baton Rouge West Baton Rouge Iberville East Feliciana West Feliciana St. Helena Livingston Tangipahoa Ascension	Iberia St. Martin St. Mary Vermilion Acadia St. Landry Calcasieu Jefferson Davis Cameron
	On Track by 5	PCECC
	Lafayette	Pointe Coupee



## 2022 Fall Collaborative Rapides Participants - October 27

NSU	Children's Coalition	VOA 5, 6, 7
Caddo Bossier Webster Claiborne Bienville Jackson Red River Desoto Sabine Natchitoches Winn Grant Lasalle Catahoula Concordia	Ouachita Lincoln Union Morehouse West Carroll East Carroll Richland Madison Caldwell Franklin Tensas	Evangeline Beauregard Allen Vernon Rapides Avoyelles

# Upcoming Frog Street Assessment Webinars

Collecting Observational Assessment Data Using Frog Street Curriculum (Infant - PreK, 2013)

**Webinar Audience:** Early Childhood Administrators

**Webinar Date/Time:** Wednesday, October 12 at 1 p.m.

**Webinar Link:** <https://us06web.zoom.us/j/89794543114?from=addon>

**Meeting ID:** 897 9454 3114

**Webinar Audience:** Site Administrators

**Webinar Date/Time:** Wednesday, October 26 at 1 p.m.

**Webinar Link:** <https://us06web.zoom.us/j/89794543114?from=addon>

**Meeting ID:** 897 9454 3114



## Transitional Support for Community Network Lead Agencies (CNLA)

*The Department will host a deep dive webinar for CNLAs supporting Family Child Care Sites through Academic Approval.*

Participants can **register** for the webinar using the information below.

**Webinar Topic:** Transitional Support for CNLAs Supporting FCC Sites

**Webinar Date/Time:** Wednesday, October 11 at 2 p.m.

**Registration Link:**

<https://ldoe.zoom.us/meeting/register/tJApceyupjliGdDlDqLhE9KpLOpkugUvuS67>

Please contact [Felicia.Jackson3@la.gov](mailto:Felicia.Jackson3@la.gov) or book a meeting [here](#) with questions or concerns.

# Young Children With Disabilities Community of Practice Webinar

*The Department will host YCWD webinars for OSEP Administrators and early childhood administrators each month.*

Participants can access the YCWD Community of Practice webinar using the information below.

**Webinar Topic:** Using CLASS in an Early Childhood Setting in Inclusive Programs

**Webinar Date/Time:** Wednesday, October 26 at 2:00 p.m.

**Webinar Link:** <https://zoom.us/j/6920610085?>

**Meeting ID:** 692 061 0085

**Passcode:** gyiy3F

Please contact [Caitlyn.Robinson@la.gov](mailto:Caitlyn.Robinson@la.gov) for any questions or concerns.



## Events and Deadlines



**October 28:** New Director [Office Hours](#) (last one until Feb. 2023)

**October 31:** Child Count Template due in FTP

**October 25 and 27:** 2022 Fall Collaboratives

**October 26:** YCWD Community of Practice [Webinar](#) (OSEP Admin/SpEd Leaders)

**December 2:**

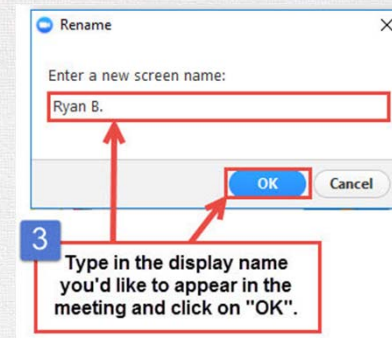
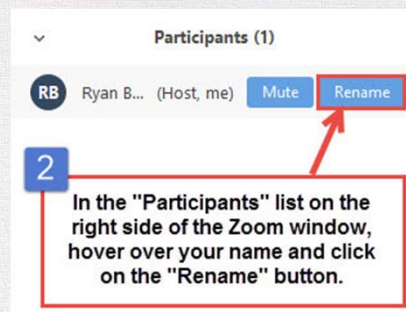
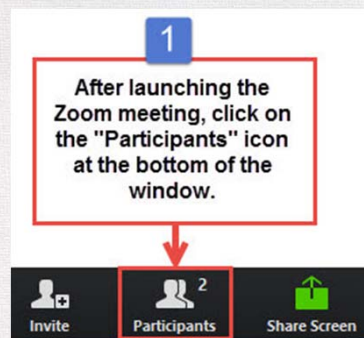
To find previous Office Hours presentations go to [Louisianabelives.com](https://Louisianabelives.com), visit the [Lead Agency Library](#) and click a download box called "Early Childhood Lead Agency Webinars."



## NEW Zoom Name Change

### Network and Name

1. Click on the "Participants" button at the top of the Zoom window.
2. Hover the mouse over your name in the "Participants" on the right of the Zoom window. Click on "Rename."
3. Enter your **network name** and **name** (ex.: **Calcasieu Michelle Joubert**) so it will appear in the Zoom meeting and click on "OK."





# Early Childhood Lead Agency Office Hours

October 11, 2022

## Agenda



- Early Childhood Reminders
- Developmental Screening Initiative Update
- Accountability
- Upcoming Events

# Early Childhood Updates





# Business Supports

*Business supports for Type III and CCAP-certified family child care providers are still available at no charge. Taking advantage of these 100% confidential services can have a high impact on Early Learning Center businesses.*

## One-on-One Business Consultation

Can help to strengthen HR practices by:

- clarifying employee expectations
- supporting staff recruitment and retention
- having clear and standard processes for equitable staffing outcomes
- support efficient licensing visits
- providing group trainings to teams of admins
- and much more!

Can help grow businesses through:

- building marketing tools
- understanding the market
- and much more!

## Tax Consultation

Can help improve bottom lines and sustainability of ELC business by:

- informing/educating providers on tax law
- using Quickbooks (or other means) to manage P&L
- inform providers on implications around accepting state and federal grants
- inform providers on allowable uses of state and federal grants
- using tax law to save money
- get ahead on filings
- and much more!

## CCMSi (Automation)

Can help by:

- having a standard process for billing families
- having a standard process for communicating with families
- having integration capability with edLink, for two-way communication with The LDOE
- having a standard process for reviewing and reporting enrollment data
- The LDOE funds 80% of first year
- and much more!

# How To Participate

*Type III and CCAP-certified family child care providers can easily participate in these services. Please use this [FAQ](#) document to help support the utilization of these services and to support the goal of building business acumen of providers.*

## One-on-One Business Consultation

Kari Statelman with First Children's Finance is ready to serve you, please use/share [this link](#) to sign up. All services are 100% confidential and FREE!

## Tax Consultation

Andrea Royston with JWRA, Inc is ready to answer any tax questions you may have in a secure and confidential manner. Please use/share [this link](#) to learn more or to sign up.

## CCMSi (Automation)

Ready to save time and money through the use of automation? Review The LDOE's [CCMSi Guidebook](#) and contact one of the listed Tier I vendors for questions, demos and to purchase CCMS. Then visit your local CCR&R to seek reimbursement.

*Please email [shallan.jones@la.gov](mailto:shallan.jones@la.gov) with any questions related to these supports.*





## Young Children with Disabilities

# Inclusion Initiative

## Conscious Discipline Training

*The LDOE is developing next steps to support networks in building capacity to assist educators in supporting inclusion for young students with disabilities.*

**The Department has purchased 10 trainings from Conscious Discipline.**

Conscious Discipline provides an array of behavior management strategies and classroom structures that teachers can use to turn everyday situations into learning opportunities.

**Details:**

- 1-day, 6-hour in-person training from 8:30 a.m. - 3:30 p.m.
- 150 participants per training (several networks/LEAs together)
- The dates that we have been given include:
  - November 14, 15, 21, 22
  - December 5, 6, 12, 13, 14, 15

**Audience:**

- Teachers who teach students with disabilities in their classrooms
- Special Education teachers
- Paraprofessionals who work with students with disabilities



# Inclusion Initiative

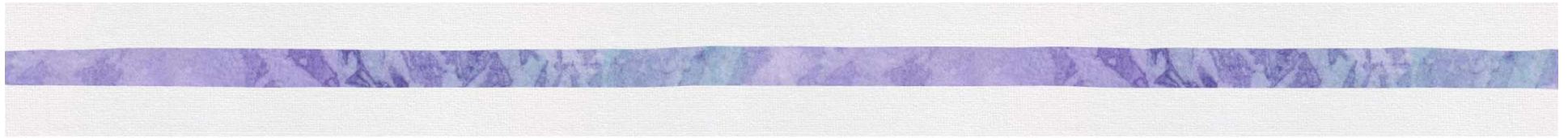
## Conscious Discipline Training

The Department is asking for sites around the state to volunteer to host this training. Conscious Discipline is asking that we select sites that are close enough to drive to from one day to the next. The training that takes place on November 14 must be drivable distance to the training that takes place on November 15.

### **Volunteer sites must provide:**

- Space for 150 participants
- Mobile wireless hands free microphone
- Screen or a white wall visually accessible to the entire audience
- LCD Projector with ability to hook laptop and LCD projector into sound system with necessary power cords
- Small table to hold all AV equipment
- Two tables at least 4ft x 6ft on stage-no podium please

If you are interested in hosting one of these trainings, please fill out the Google form [here](#). If you have any questions, please contact [Caitlyn.Robinson@la.gov](mailto:Caitlyn.Robinson@la.gov).



## Upcoming Events





## 2022 Fall Collaboratives

This year Fall Collaboratives will focus on cross-agency collaboration.

In order to ensure that all agencies serving the same communities are in attendance at the same sessions, the Department has assigned CNLAs to one of two locations based on geographic location and partnering CCR&R agency.

Location	When and Where
Baton Rouge, Claiborne Building	Tuesday, October 25, 9-12 p.m.
Rapides, Rapides Parish School Board Instructional	Thursday, October 27, 9-12 p.m.



## 2022 Fall Collaborative

### Baton Rouge Participants - October 25

Agenda for Children	VOA 2, 3, 4	VOA 5, 6, 7
Assumption Orleans Jefferson Lafourche Plaquemines St. Tammany St. John St. James St. Charles Terrebonne St. Bernard Washington	Ascension East Baton Rouge East Feliciana Iberville Livingston St. Helena Tangipahoa West Baton Rouge West Feliciana	Acadia <b>Allen</b> Calcasieu Cameron <b>Iberia</b> Jefferson Davis St. Landry St. Martin St. Mary Vermilion
	On Track by 5	PCECC
	Lafayette	Pointe Coupee



## 2022 Fall Collaborative

### Rapides Participants - October 27

NSU	Children's Coalition	VOA 5, 6, 7
Bossier Bienville Caddo Catahoula Claiborne Concordia Desoto Grant Lasalle Jackson Red River Sabine Natchitoches Winn Webster	Caldwell East Carroll Franklin Lincoln Madison Morehouse Ouachita Richland Tensas Union West Carroll	Avoyelles Beauregard Evangeline Rapides Vernon

## Upcoming Frog Street Assessment Webinars

*The Department will host two webinars for Collecting Observational Assessment Data Using Frog Street Curriculum (Infant - PreK, 2013), for site administrators and for EC administrators.*

**Webinar Audience:** Early Childhood Administrators

**Webinar Date/Time:** Wednesday, October 12 at 1 p.m.

**Webinar Link:** <https://us06web.zoom.us/j/89794543114?from=addon>

**Meeting ID:** 897 9454 3114

**Webinar Audience:** Site Administrators

**Webinar Date/Time:** Wednesday, October 26 at 1 p.m.

**Webinar Link:** <https://us06web.zoom.us/j/89794543114?from=addon>

**Meeting ID:** 897 9454 3114



# Young Children With Disabilities Community of Practice Webinar

*The Department will host YCWD webinars for OSEP Administrators and early childhood administrators each month.*

Participants can access the YCWD Community of Practice webinar using the information below.

**Webinar Topic:** Using CLASS in an Early Childhood Setting in Inclusive Programs

**Webinar Date/Time:** Wednesday, October 26 at 2:00 p.m.

**Webinar Link:** <https://zoom.us/j/6920610085?>

**Meeting ID:** 692 061 0085

**Passcode:** gyiy3F

Please contact [Caitlyn.Robinson@la.gov](mailto:Caitlyn.Robinson@la.gov) for any questions or concerns.

## Office Hours Topics

Date	Topic
October 18	Believe! Grant information
October 25	<i>Canceled</i> due to Collaboratives
November 1	Provide Super App guidance
November 8	<i>Canceled</i> due to Election Day
November 15	General topics
November 22	<i>Canceled</i> due Thanksgiving Holiday week



## Events and Deadlines

**October 11:** Transitional Support for CNLAs

**October 28:** New Director [Office Hours](#) (last one until Feb. 2023)

**October 31:** Child Count Template due in FTP

**October 25 and 27:** 2022 Fall Collaboratives

**October 26:** YCWD Community of Practice [Webinar](#)

**December 2:** Submission of Coordinated Enrollment Plan Jotform

To find previous Office Hours presentations go to [Louisianabelives.com](https://Louisianabelives.com), visit the [Lead Agency Library](#) and click a download box called "Early Childhood Lead Agency Webinars."

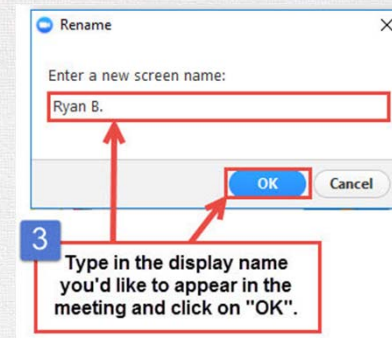
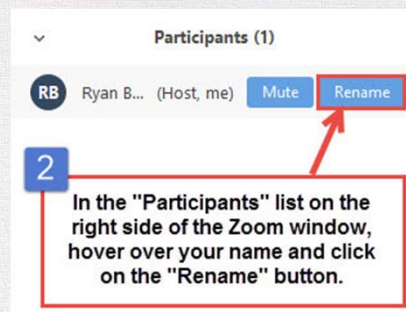
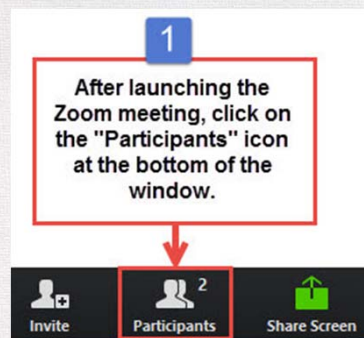




## NEW Zoom Name Change

### Network and Name

1. Click on the "Participants" button at the top of the Zoom window.
2. Hover the mouse over your name in the "Participants" on the right of the Zoom window. Click on "Rename."
3. Enter your **network name and name** (ex.: **Calcasieu Michelle Joubert**) so it will appear in the Zoom meeting and click on "OK."





# Early Childhood Lead Agency Office Hours

October 18, 2022

## Agenda



- Early Childhood Reminders
- Developmental Screening Initiative Update
- Accountability
- Upcoming Events

# Early Childhood Updates







## Young Children with Disabilities

# Inclusion Initiative

## Conscious Discipline Training

*The LDOE is developing next steps to support networks in building capacity to assist educators in supporting inclusion for young students with disabilities.*

**The Department has purchased 10 trainings from Conscious Discipline.**

Conscious Discipline provides an array of behavior management strategies and classroom structures that teachers can use to turn everyday situations into learning opportunities.

**Details:**

- 1-day, 6-hour in-person training from 8:30 a.m. - 3:30 p.m.
- 150 participants per training (several networks/LEAs together)
- The dates that we have been given include:
  - November 14, 15, 21, 22
  - December 5, 6, 12, 13, 14, 15

**Audience:**

- Teachers who teach students with disabilities in their classrooms
- Special Education teachers
- Paraprofessionals who work with students with disabilities



# Inclusion Initiative

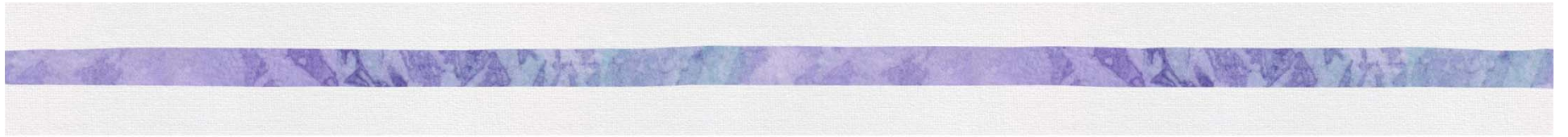
## Conscious Discipline Training

The Department is asking for sites around the state to volunteer to host this training. Conscious Discipline is asking that we select sites that are close enough to drive to from one day to the next. The training that takes place on November 14 must be drivable distance to the training that takes place on November 15.

### **Volunteer sites must provide:**

- Space for 150 participants
- Mobile wireless hands free microphone
- Screen or a white wall visually accessible to the entire audience
- LCD Projector Public address system with ability to hook laptop and LCD projector into sound system with necessary power cords
- Small Table to hold all AV equipment
- Two tables at least 4ft x 6ft on stage-no podium please

If you are interested in hosting one of these trainings, please fill out the Google form [here](#). If you have any questions, please contact [Caitlyn.Robinson@la.gov](mailto:Caitlyn.Robinson@la.gov).



## Upcoming Events





## 2022 Fall Collaboratives

This year Fall Collaboratives will focus on cross-agency collaboration.

In order to ensure that all agencies serving the same communities are in attendance at the same sessions, the Department has assigned CNLAs to one of two locations based on geographic location and partnering CCR&R agency.

Location	When and Where
Baton Rouge, Claiborne Building	Tuesday, October 25, 9-12 p.m.
Rapides, Rapides Parish School Board Instructional	Thursday, October 27, 9-12 p.m.



## 2022 Fall Collaborative

### Baton Rouge Participants - October 25

Agenda for Children	VOA 2, 3, 4	VOA 5, 6, 7
Orleans Jefferson St. Bernard Plaquemines Washington St. Tammany St. John St. James St. Charles Lafourche Assumption Terrebonne	East Baton Rouge West Baton Rouge Iberville East Feliciana West Feliciana St. Helena Livingston Tangipahoa Ascension	Iberia St. Martin St. Mary Vermilion Acadia St. Landry Calcasieu Jefferson Davis Cameron
	On Track by 5	PCECC
	Lafayette	Pointe Coupee



## 2022 Fall Collaborative Rapides Participants - October 27

NSU	Children's Coalition	VOA 5, 6, 7
Caddo Bossier Webster Claiborne Bienville Jackson Red River Desoto Sabine Natchitoches Winn Grant Lasalle Catahoula Concordia	Ouachita Lincoln Union Morehouse West Carroll East Carroll Richland Madison Caldwell Franklin Tensas	Evangeline Beauregard Allen Vernon Rapides Avoyelles

# Upcoming Frog Street Assessment Webinars

Collecting Observational Assessment Data Using Frog Street Curriculum (Infant - PreK, 2013)

**Webinar Audience:** Early Childhood Administrators

**Webinar Date/Time:** Wednesday, October 12 at 1 p.m.

**Webinar Link:** <https://us06web.zoom.us/j/89794543114?from=addon>

**Meeting ID:** 897 9454 3114

**Webinar Audience:** Site Administrators

**Webinar Date/Time:** Wednesday, October 26 at 1 p.m.

**Webinar Link:** <https://us06web.zoom.us/j/89794543114?from=addon>

**Meeting ID:** 897 9454 3114



# Transitional Support for Community Network Lead Agencies (CNLA)

*The Department will host a deep dive webinar for CNLAs supporting Family Child Care Sites through Academic Approval.*

Participants can **register** for the webinar using the information below.

**Webinar Topic:** Transitional Support for CNLAs Supporting FCC Sites

**Webinar Date/Time:** Wednesday, October 11 at 2 p.m.

**Registration Link:**

<https://ldoe.zoom.us/meeting/register/tJApceyupjliGdDlDqLhE9KpLOpkugUvuS67>

Please contact [Felicia.Jackson3@la.gov](mailto:Felicia.Jackson3@la.gov) or book a meeting [here](#) with questions or concerns.

# Young Children With Disabilities Community of Practice Webinar

*The Department will host YCWD webinars for OSEP Administrators and early childhood administrators each month.*

Participants can access the YCWD Community of Practice webinar using the information below.

**Webinar Topic:** Using CLASS in an Early Childhood Setting in Inclusive Programs

**Webinar Date/Time:** Wednesday, October 26 at 2:00 p.m.

**Webinar Link:** <https://zoom.us/j/6920610085?>

**Meeting ID:** 692 061 0085

**Passcode:** gyiy3F

Please contact [Caitlyn.Robinson@la.gov](mailto:Caitlyn.Robinson@la.gov) for any questions or concerns.



## Coordinated Enrollment Planning Important Dates

Date	Events
October 4	LDOE releases Coordinated Enrollment Plan Template (PDF) version for planning and collaboration
October 11	Release Jotform link of the Coordinated Enrollment Plan during Office Hours
December 2	Submit Coordinated Enrollment Plan via Jotform by close of business

For questions contact [amanda.colon@la.gov](mailto:amanda.colon@la.gov)

## Office Hours Topics

Date	Topic
October 11	Release Jotform link for submission of Coordinated Enrollment Plan (due on December 2)



## Events and Deadlines

**October 11:** Transitional Support for CNLAs

**October 28:** New Director [Office Hours](#) (last one until Feb. 2023)

**October 31:** Child Count Template due in FTP

**October 25 and 27:** 2022 Fall Collaboratives

**October 26:** YCWD Community of Practice [Webinar](#) (OSEP Admin/SpEd Leaders)

To find previous Office Hours presentations go to [Louisianabelives.com](https://Louisianabelives.com), visit the [Lead Agency Library](#) and click a download box called "Early Childhood Lead Agency Webinars."

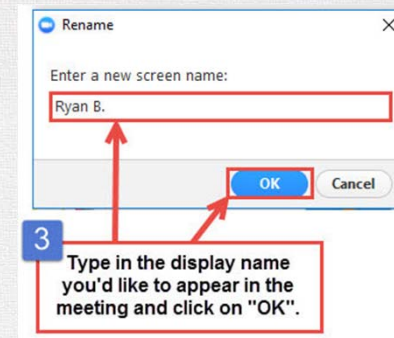
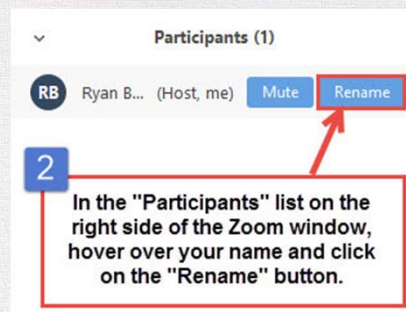
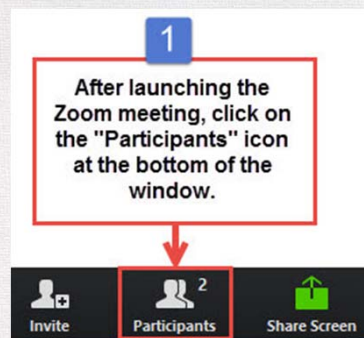




## NEW Zoom Name Change

### Network and Name

1. Click on the "Participants" button at the top of the Zoom window.
2. Hover the mouse over your name in the "Participants" on the right of the Zoom window. Click on "Rename."
3. Enter your **network name and name** (ex.: **Calcasieu Michelle Joubert**) so it will appear in the Zoom meeting and click on "OK."





# Early Childhood Lead Agency Office Hours

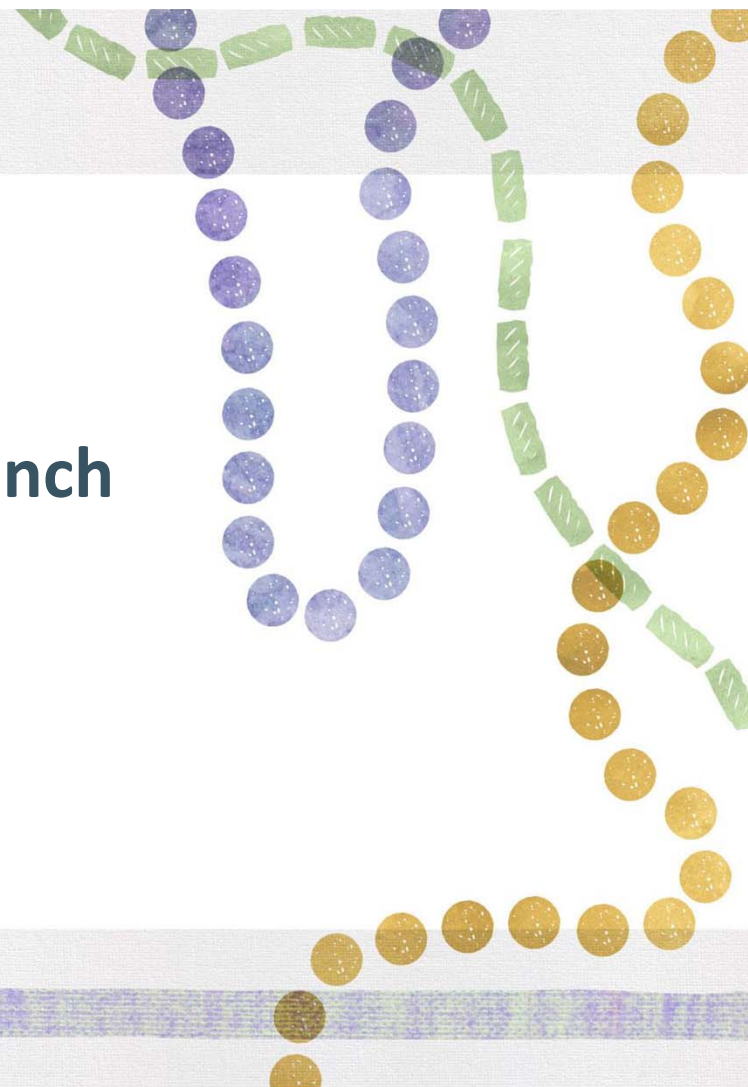
October 25, 2022

## Agenda

- *Believe!* Application
- Early Childhood Updates
- Director Updates
- Young Children with Disabilities
- Accountability
- Upcoming Events



**2023-2024 *Believe!* Application Launch**







## ***Believe!* Application**

*Through the Believe! Application for 2023-2024, lead agencies can apply for funding to support the four categories outlined in the Believe! Early Childhood Planning Guide.*

The *Believe!* Application is divided into four parts to ensure that Louisiana achieves the following:

1. **Strengthens the child care system** to meet the needs of all families and support the stabilization of the child care sector.
2. **Expands supply of and access to high-quality early childhood** options for families and to identify opportunities to sustain that expansion long-term.
3. **Prepares and supports teachers** to lead classrooms and provide high-quality interactions that meet the developmental needs of children every day.
4. **Empowers families** to access tools and resources to support their children's development.



## *Believe!* Framework Organization

- **Category:** The four early childhood planning categories include the most critical areas for a strong start: strengthening child care; expanding supply and access; classroom quality; and family engagement & support.
- **LDOE Priority:** Each category is aligned to an LDOE priority found in [Believe to Achieve](#).
- **Activity:** Each category is further subdivided into prioritized activities for communities. While these activities are not required, they are recommended for communities and some may be supported through *Believe!* funding.
- **Funding Guidance:** Early childhood community networks are eligible to apply for funding to address all four priorities in one consolidated application, the [Early Childhood Believe! Application](#). School systems and early childhood community networks may also be able to support these priority activities with additional funding provided through Super App or *Achieve!*



## Super App and *Believe!* Differences

Super App Submission	<i>Believe!</i> Application
<ul style="list-style-type: none"><li>● Submitted every year</li><li>● Opportunity to apply for:<ul style="list-style-type: none"><li>○ LA 4 and NSECD Seats</li><li>○ B-3 Seats</li><li>○ CLSD funding for curriculum and professional development</li></ul></li></ul>	<ul style="list-style-type: none"><li>● Application for 2023-2024, the <b>final</b> stimulus application</li><li>● Only available for community network lead agencies</li><li>● Opportunity to apply for limited funding to support:<ul style="list-style-type: none"><li>○ Child Care Stabilization</li><li>○ Access Expansion</li><li>○ Quality Supports</li><li>○ Family Engagement</li></ul></li></ul>

# Early Childhood *Believe!* Application Funding Logic

*The Appendix of the Believe! Planning Template indicates the amount of funding each network can apply for in each category.*

Category 1: Child Care Stabilization	Category 2: Access Expansion	Category 3: High-Quality Classrooms	Category 4: Empowering Families
Funding amount determined based on the number of classrooms in Type III centers in each network	Funding amount available at the same level for all interested networks, no matter the size	Funding amount determined based on the number of classrooms in Type III centers in each network	Funding amount determined based on the number of birth through three-year-olds who are economically disadvantaged and reside in the network
<i>Approximately \$986 per Type III center classroom</i>	<i>\$35,000</i>	<i>An estimation of about \$500 per classroom not served in last year's Believe! Grant, plus an additional \$3,000 per CNLA to cover additional costs.</i>	<i>Varies based on B-3 population of network</i>



# Believe! Application

## Changes to Funding Information

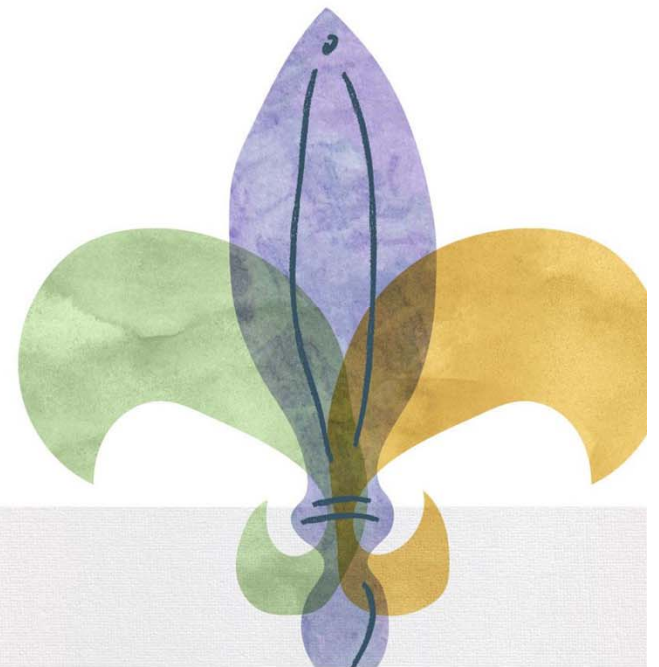


In the **Application Planning Template**, there is an appendix that includes the maximum amount of funding that can be requested per category for each lead agency.

When making funding requests for each category, keep in mind that lead agencies **can** take indirect costs on this funding when awarded.

Category 1	Category 2	Category 3	Category 4
Funding supports child care sites only (not be used for school-based pre-K, Head Start, or Early Head Start sites).	Funding supports Type III child care sites only (not be used for school-based pre-K, Head Start, or Early Head Start sites).	Funding may now be used to support pre-K classrooms for the 2023-2024 school year	Funding supports community-wide family engagement strategies, regardless of the child's enrollment status
Funding expires December 2023 (prioritize)	Funding expires June 30, 2024	Funding expires December 2023 (prioritize)	Funding expires June 30, 2024

# Early Childhood Updates





# Federal Student Debt Relief Application Now Available

*Student loan borrowers across the country are now able to apply for federal student debt relief online. Please share this information with your staff, the families in your center, and friends.*

The [application](#) is now available online.

This federal student debt relief provides eligible borrowers with full or partial discharge of loans up to \$20,000 to Federal Pell Grant recipients and up to \$10,000 to non-Pell Grant recipients.

Qualifying individuals are people who:

- made less than \$125,000 in 2021 or 2020
- made less than \$250,000 in 2021 or 2020

Apply today (but no later than Dec. 31, 2023). Your loan servicer will notify you when your relief has been processed.



# Coordinated Funding Request 2023-2024 School Year

*Each year, Community Network Lead Agencies are tasked with requesting funds for the upcoming fiscal year to expand access through publicly-funded seats, such as NSECD, LA4, and B-3 Seats.*

Each year, Community Network Lead Agencies must assess the community need for seats, availability of seats among providers, and make bold and ambitious requests for seats to be placed in high-quality providers.

- Communicate with providers and assess their capacity
- Analyze the administrative capacity of your CNLA in implementing these seats, if the request were to be met
- Conduct family and community outreach to ensure there is a demand for seats, especially by age group

*This will be in conjunction with Super App, which will be discussed in Nov. 1 Office Hours. If you have any questions about the Coordinated Funding Request, please reach out to [earlychildhood@la.gov](mailto:earlychildhood@la.gov).*



## Director Updates



# Business Supports

*Business supports for Type III and CCAP-certified family child care providers are still available at no charge. Taking advantage of these 100% confidential services can have a high impact on Early Learning Center businesses.*

## One-on-One Business Consultation

Can help to strengthen HR practices by:

- clarifying employee expectations
- supporting staff recruitment and retention
- having clear and standard processes for equitable staffing outcomes
- support efficient licensing visits
- providing group trainings to teams of admins
- and much more!

Can help grow businesses through:

- building marketing tools
- understanding the market
- and much more!

## Tax Consultation

Can help improve bottom lines and sustainability of ELC business by:

- informing/educating providers on tax law
- using Quickbooks (or other means) to manage P&L
- inform providers on implications around accepting state and federal grants
- inform providers on allowable uses of state and federal grants
- using tax law to save money
- get ahead on filings
- and much more!

## CCMSi (Automation)

Can help by:

- having a standard process for billing families
- having a standard process for communicating with families
- having integration capability with edLink, for two-way communication with The LDOE
- having a standard process for reviewing and reporting enrollment data
- The LDOE funds 80% of first year
- and much more!



# How To Participate

*Type III and CCAP-certified family child care providers can easily participate in these services. Our FAQ document (to be emailed) will also help to support the utilization of these services to support the goal of building business acumen of providers.*

## One-on-One Business Consultation

Kari Statelman with First Children's Finance is ready to serve you, please use/share [this link](#) to sign up. All services are 100% confidential and FREE!

## Tax Consultation

Andrea Royston with JWRA, Inc is ready to answer any tax questions you may have in a secure and confidential manner. Please use/share [this link](#) to learn more or to sign up.

## CCMSi (Automation)

Ready to save time and money through the use of automation? Review The LDOE's [CCMSi Guidebook](#) and contact one of the listed Tier I vendors for questions, demos and to purchase CCMS. Then visit your local CCR&R to seek reimbursement.

Contact [shallan.jones@la.gov](mailto:shallan.jones@la.gov) with any questions related to these supports.



## Young Children with Disabilities



# Inclusion Initiative

## Conscious Discipline Training

*The LDOE is developing next steps to support networks in building capacity to assist educators in supporting inclusion for young students with disabilities.*

**The Department has purchased 10 trainings from Conscious Discipline.**

Conscious Discipline provides an array of behavior management strategies and classroom structures that teachers can use to turn everyday situations into learning opportunities.

**Details:**

- 1-day, 6-hour in-person training from 8:30 a.m. - 3:30 p.m.
- 150 participants per training (several networks/LEAs together)
- Registration is required to attend. Eventbrite sign-up will be date-specific. Links will be shared during the Young Children with Disabilities Community Of Practice [Webinar](#) tomorrow at 2 p.m.

**Audience:**

- Teachers who teach students with disabilities in their classrooms
- Special Education teachers
- Paraprofessionals who work with students with disabilities



# Developmental Screening Initiative

## ASQ-3 Kits

The Department purchased 1,390 ASQ-3 kits and are being shipped this week from Brookes Publishing. Community network lead agencies can expect these **materials to arrive within next couple of weeks** at the addresses that were provided.

### ASQ Training of Trainers:

- Materials for the November and January trainings will be mailed out next week to arrive prior to the November training.
- To prepare for the the ASQ Training of Trainers training, please bring the ASQ-3 and ASQ-SE User's Guides which can be found in the Starter Kit.



Contact [Caitlyn.Robinson@la.gov](mailto:Caitlyn.Robinson@la.gov) with questions about ASQ training and materials





# Accountability



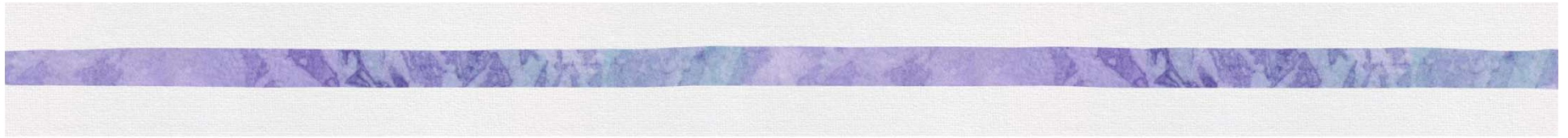
## Performance Profile Release

*The Department anticipates releasing 2021-2022 Performance Profiles by mid-November, including Performance Scores as well as Informational Metrics of Best Practices.*

- Preliminary results were released to community network lead agencies. These results can be distributed to sites and administrators, but *should not yet be released to the public*
- The 2021-2022 Performance Profiles will reflect the flexibilities approved by BESE
  - Classrooms that scored 4.50 or higher after third-party replacement in the fall could waive their spring observation
  - Performance Profiles will include observation results solely from 2021-2022
- As a reminder, finalized results will be released to the public in November

Contact [robert.jones4@la.gov](mailto:robert.jones4@la.gov) with any questions or concerns.





## Upcoming Events



## 2022 Fall Collaboratives Postponed

The LDOE is postponing Fall Collaboratives that were originally scheduled for this week on October 25 and October 27.

The Department anticipates moving collaboratives to early December with a focus on:

- Cross-agency collaboration
- Using data to plan for Spring 2023
- Continued support for FCC educators

Additional details about the rescheduled collabs will be shared during upcoming Office Hours webinars.

Contact [amanda.colon@la.gov](mailto:amanda.colon@la.gov) with questions.



# Early Childhood Child Care Parent Poll

The Department and the Louisiana Policy Institute for Children is partnering again to release the [Louisiana Child Care Parent Poll](#). The survey went **live on Wednesday, October 19 and closes November 2**. The purpose is to understand the child care needs of Louisiana families with children under the age of 5, e.g., child care arrangements, ease of finding child care, child care expenses, quality of care, and family work schedules.

The Department asks CNLAs to help promote the Child Care Parent Poll

- Use the [Parent Poll Media Toolkit](#) to post on the community network's social media account.
- Share with families the Parent Poll QR Code e.g., post the flyer near pick-up/drop-off, in hallways/classrooms, text-based messages and via emails.
- Ensure all program partners have access to the *Early Childhood Connect Newsletter Special Edition* to be released October 20, 2022.

 **Believes** Contact [amanda.colon@la.gov](mailto:amanda.colon@la.gov) with questions.



# GOLD® Update Webinars

*The Department will host GOLD® update webinars for site leaders and network leaders. Participants can access the GOLD® informational webinar using the information below.*

**Webinar Topic:** GOLD® Update Webinar for Network Administrators

**Webinar Date/Time:** Wednesday, November 16 at 1 p.m.

**Webinar Link:** <https://ldoe.zoom.us>

**Meeting ID:** 918 3028 5934

**Passcode:** 456055

Please read the Department's updated [TS GOLD® Guidance](#) and [TS GOLD® FAQ](#) documents for helpful information.

Please contact [ECAssessment@la.gov](mailto:ECAssessment@la.gov) with questions or concerns.



# Upcoming Frog Street Assessment Webinars

Collecting Observational Assessment Data Using Frog Street Curriculum (Infant - PreK, 2013)

**Webinar Audience:** Site Administrators

**Webinar Date/Time:** Wednesday, October 26 at 1 p.m.

**Webinar Link:** <https://us06web.zoom.us/j/89794543114?from=addon>

**Meeting ID:** 897 9454 3114

Email [ecassessment@la.gov](mailto:ecassessment@la.gov) with TS GOLD questions or concerns.

Please use the Department's updated [TS GOLD® Guidance](#) and [TS GOLD® FAQ](#) documents for helpful information.

# Young Children With Disabilities Community of Practice Webinar

*The Department will host YCWD webinars for OSEP Administrators and early childhood administrators each month.*

Participants can access the YCWD Community of Practice webinar using the information below.

**Webinar Topic:** Using CLASS in an Early Childhood Setting in Inclusive Programs

**Webinar Date/Time:** Wednesday, October 26 at 2:00 p.m.

**Webinar Link:** <https://zoom.us/j/6920610085?>

**Meeting ID:** 692 061 0085

**Passcode:** gyiy3F

Please contact [Caitlyn.Robinson@la.gov](mailto:Caitlyn.Robinson@la.gov) for any questions or concerns.



## Events and Deadlines

**October 19 - Nov. 2:** Promote the Parent Poll

**October 28:** New Director [Office Hours](#) (last one until Feb. 2023)

**October 31:** Child Count Template due in FTP

**October 25 and 27:** **Canceled** 2022 Fall Collaboratives

**October 26:** YCWD Community of Practice [Webinar](#)

**November 16:** GOLD Updates Webinar

**December 2:** Submission of Coordinated Enrollment Plan via [Jotform](#)

To find previous Office Hours presentations go to [Louisianabelives.com](https://Louisianabelives.com), visit the [Lead Agency Library](#) and click a download box called "Early Childhood Lead Agency Webinars."

