



WHAT IS THE LOUISIANA MODELS OF EXCELLENCE INITIATIVE?

The Louisiana Models of Excellence initiative was created in an effort to acknowledge, honor, and spotlight schools serving as exemplary models for implementing the Department's *Believe to Achieve* educational priorities that leads to the advancement of student success.

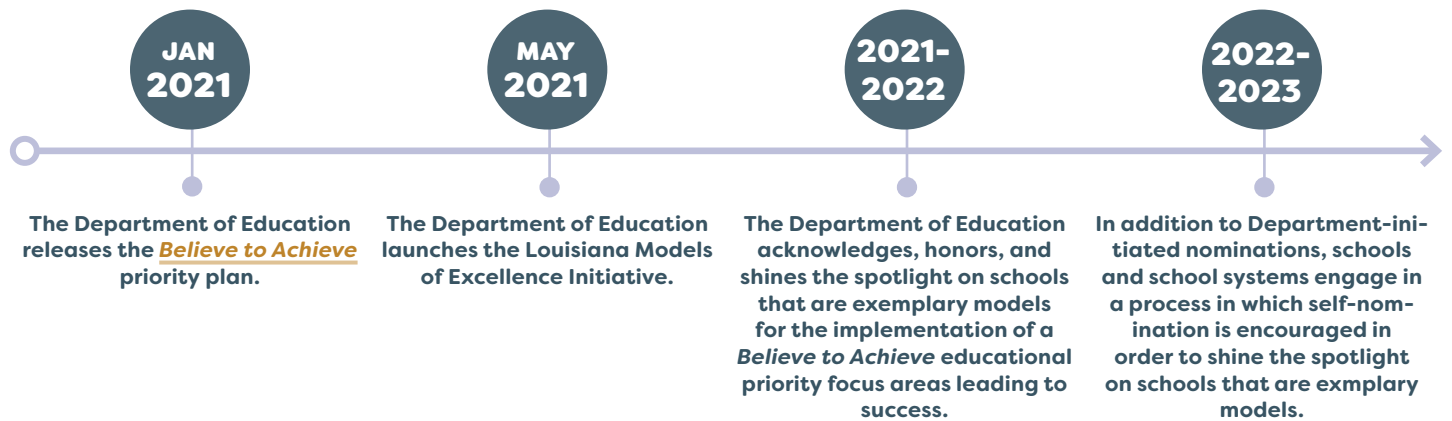
This initiative has three main goals.

- To celebrate excellence in Louisiana schools
- To share stories of success and provide models for others to see
- To create high-impact partnerships across school systems



THE FIVE LOUISIANA EDUCATIONAL PRIORITIES ARE:

- Ensure every student is on track to a professional career, college degree or service
- Remove barriers and create equitable, inclusive learning experiences for all children
- Provide the highest quality teaching and learning environment
- Develop and retain a diverse, highly-effective educator workforce
- Cultivate high-impact systems, structures and partnerships



WHAT DOES IT TAKE FOR A SCHOOL TO BE RECOGNIZED AS A MODEL OF EXCELLENCE?



For questions, contact modelsofexcellence@la.gov, or visit our [website](#).