

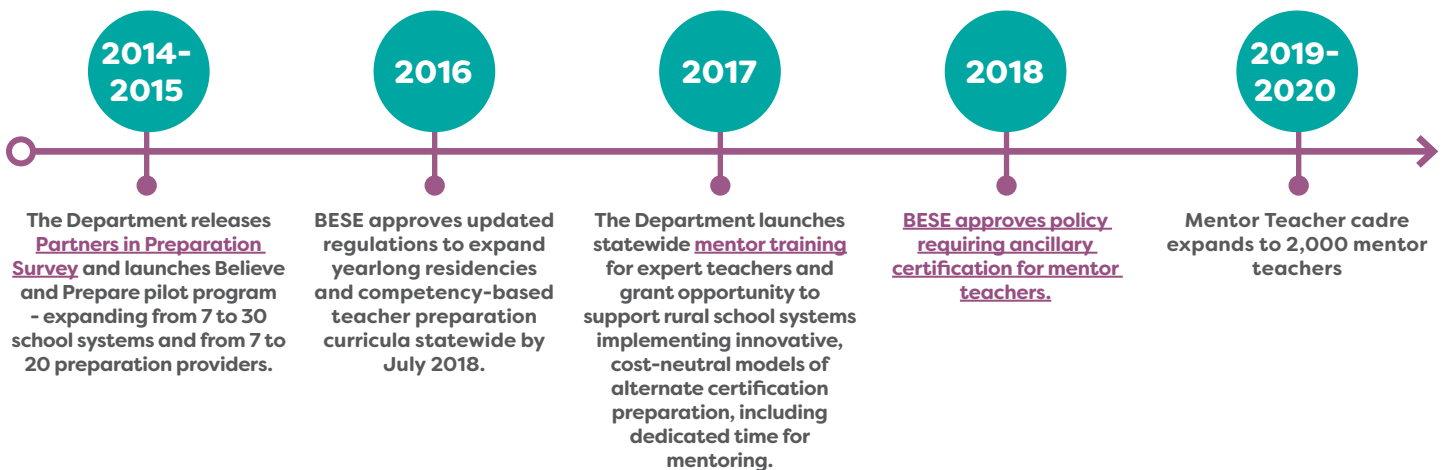
Believe & PREPARE

PREPARING LOUISIANA'S NEXT GENERATION EDUCATORS

WHAT IS BELIEVE AND PREPARE?

In line with leading nations' approaches to teacher preparation, the Department launched the **nationally recognized Believe and Prepare** pilot program in 2014. Believe and Prepare programs offer aspiring teachers a full year of practice under an expert mentor and a competency-based curriculum.

In October 2016, the Board of Elementary and Secondary Education (BESE), with support from the Board of Regents (BoR), adopted landmark regulations to **expand these practices** statewide. As of July 2018, all teacher preparation programs must include a yearlong residency alongside an expert mentor, and all preparation programs must include a **competency-based design**.



WHAT SUCCESS HAS BELIEVE AND PREPARE HAD IN LOUISIANA & NATIONALLY?

IN THE NEWS

"BESE Expands Full Year Classroom Residency for Teachers"

<https://www.louisianabelieves.com/newsroom/news-releases/2016/10/12/bese-expands-full-year-classroom-residency-for-teachers>

"Louisiana Establishes Credentials for Teacher Leadership Roles"

<http://www.louisianabelieves.com/newsroom/news-releases/2018/10/17/louisiana-establishes-credentials-for-teacher-leadership-roles>

"This State is Reimagining How to Mentor Teachers in Alternative-Certification Programs"

https://blogs.edweek.org/edweek/teacherbeat/2018/12/mentoring_alternatively_certified_teachers.html?r=1614585979

"Paving the Way for a New Generation"

<http://www.louisianabelieves.com/newsroom/tomorrow's-teacher-a-believe-and-prepare-educator-blog>

"Letters: Residencies for teachers good idea"

http://www.theadvocate.com/baton_rouge/opinion/letters/article_2b3e30a6-ad02-11e6-83b4-7b3c9f4ebc08.html?sr_source=lift_amplify

Since the inception of Believe and prepare over 1,200 aspiring teachers have benefited from participating in yearlong residencies. Since 2016 over 800 teachers have been trained to serve as mentor teachers. 93% of school systems have trained mentors.

WHO TO CONTACT?
BELIEVEANDPREPARE
@LA.GOV
OR VISIT OUR
WEBSITE*

WHAT'S NEXT FOR BELIEVE AND PREPARE?

Louisiana will continue to establish a cadre of at least 2,000 paid, trained mentor teachers. The Department will also focus on expanding access to yearlong residencies in rural school systems.