

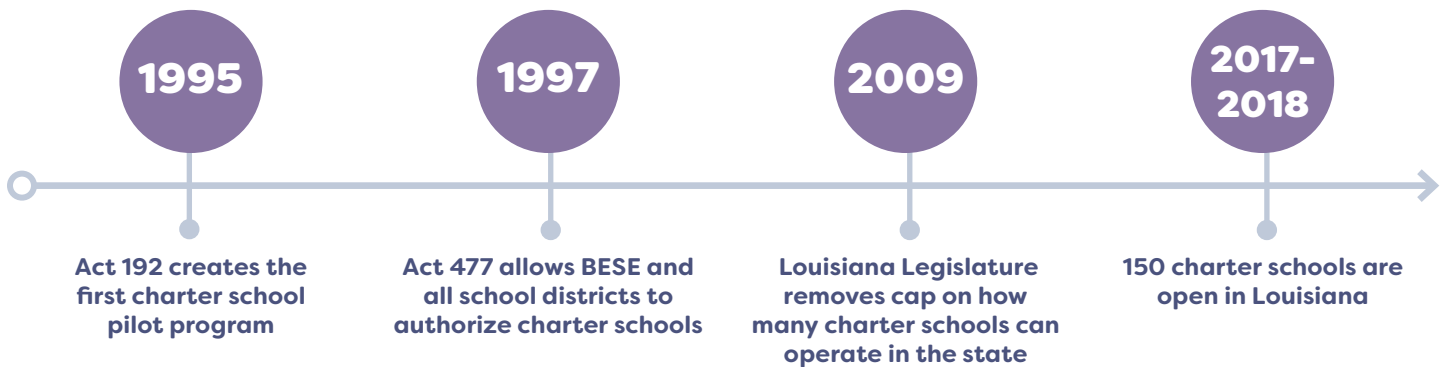
CHARTER SCHOOL AUTHORIZATION & ACCOUNTABILITY

WHAT IS CHARTER SCHOOL AUTHORIZATION AND ACCOUNTABILITY?

Louisiana charter schools are public schools that exercise increased levels of autonomy in exchange for increased levels of accountability. They are able to make decisions about curriculum, staffing, and budgets based on the specific students enrolled in their schools. In exchange for this increased autonomy, charter schools are held accountable to an increasing set of accountability expectations year-on-year in order to continue serving students in Louisiana.

The Louisiana Department of Education:

- administers a process for applicants to apply to open new charter schools;
- monitors the performance of charter schools over the term of their charter; and
- holds charter schools accountable when they fail to meet performance expectations.



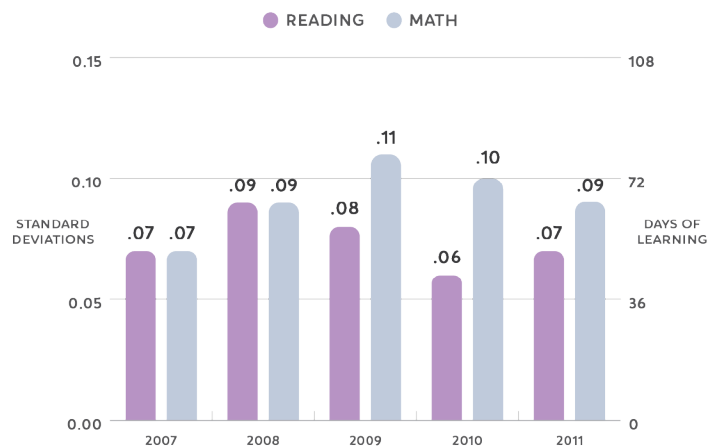
WHAT SUCCESS HAVE LOUISIANA CHARTER SCHOOLS HAD?

According to 2013 research from Stanford's Center for Research on Education Outcomes (CREDO), Louisiana's charter school students on average:

- receive 50 more days of learning in reading and 65 more days in math than students in traditional public schools;
- learn significantly more than their counterparts in reading and math regardless of the grade span served by the charter they attend; and
- benefit from additional days of learning as they continue their enrollment in a charter school.

The CREDO study also found that, on average, African-American students and students who are in poverty in charter schools have significantly better learning gains in reading and math compared to African-American students and students who are in poverty in traditional public schools.

READING AND MATH PERFORMANCE IN CHARTER SCHOOLS



Source: CREDO. *Charter School Performance in Louisiana (2013)*. <http://credo.stanford.edu>

WHAT'S NEXT FOR LOUISIANA CHARTER SCHOOLS?

During the fall and winter, BESE will ensure that charter schools in Louisiana continue to improve educational opportunities for students by approving new high-quality charter operators and holding current charter operators to high standards.

- In the fall, BESE considers the Superintendent's recommendations to open new charter schools based on a rigorous application process.
- In the winter, BESE considers the Superintendent's recommendations to extend or renew the contracts of charter schools that meet a strict academic bar.

WHO TO CONTACT?
CHARTERS@LA.GOV
 OR VISIT OUR
WEBSITE*