

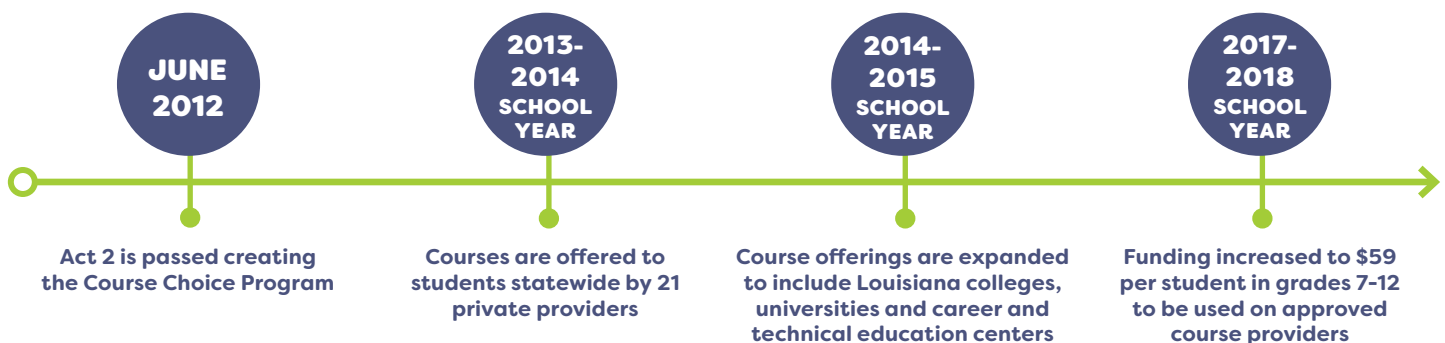


WHAT IS SUPPLEMENTAL COURSE ALLOCATION/COURSE CHOICE (SCA)?

The Supplemental Course Allocation/Course Choice (SCA) program was developed to:

- provide course opportunities not available at a student's school
- develop innovative career and technical education courses and internship opportunities
- motivate academically-focused students to graduate high school on time or early, and
- help students who are behind their class level to catch up and graduate on time.

SCA currently gives school systems and schools an allocation of \$59 per student in grades 7-12 to be spent on approved providers of academic courses. Courses include core subjects required for the TOPS University Diploma, career and technical education courses required for the Jump Start diploma, test preparation courses, and dual enrollment opportunities for students. Courses are delivered in online, face-to-face and hybrid formats.



WHAT SUCCESS HAS SCA HAD IN LOUISIANA & NATIONALLY?

Since the 2013-2014 school year, the Course Choice program has provided Louisiana students the opportunity to earn credit in over 110,000 high school and postsecondary courses. All of these courses are in subject areas for which students taking the course currently did not have access to in their home schools.

2013-2014 Provider Enrollments = 2,196
2014-2015 Provider Enrollments = 26,068
2015-2016 Provider Enrollments = 33,173
2016-2017 Provider Enrollments = 47,056
2017-2018 Provider Enrollments = 54,494

An increase of **52,298** since 2013-2014

WHAT'S NEXT FOR SCA?

New service providers will be reviewed and awarded entry into the program during the 2018-2019 school year in order to increase educational opportunities and options for Louisiana's students.

Moving forward, the focus for SCA will be on:

- increasing opportunities in Career and Technical Education for students statewide to assist with obtaining Jump Start credentials; and
- increasing high demand courses such as ACT preparation and dual enrollment opportunities.

WHO TO CONTACT?
SCA@LA.GOV
OR VISIT OUR WEBSITE*