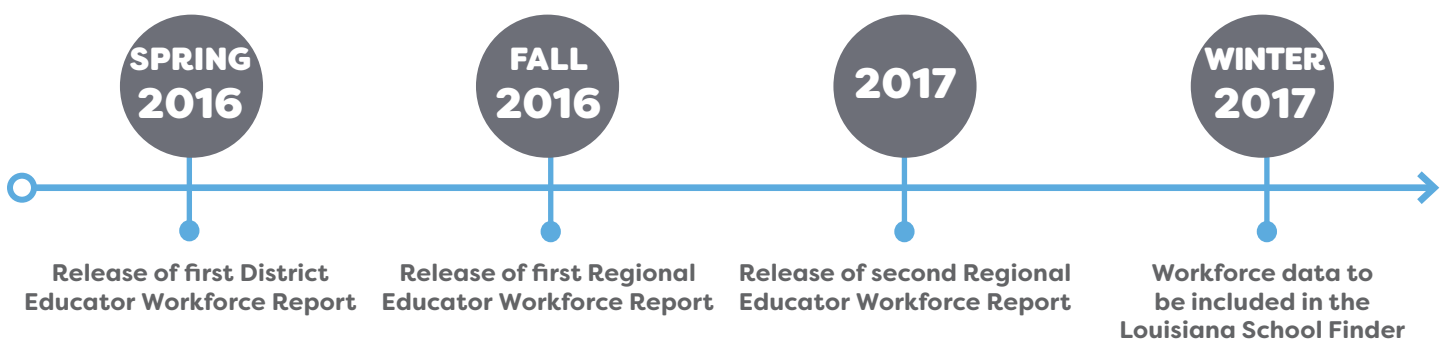


# EDUCATOR WORKFORCE REPORTS

## WHAT ARE EDUCATOR WORKFORCE REPORTS?

The district educator workforce report was developed to inform school system leaders' educator workforce decisions by providing a rich field of data. The report contains data relative to educator recruitment, promotion, compensation, and placement.

The regional educator workforce report aggregates much of the district-level data to inform partnerships between district leaders and preparation providers, who have been able to make informed decisions around preparing, supporting, and retaining strong teachers and leaders.



## WHAT SUCCESS HAS THE EDUCATOR WORKFORCE REPORTS HAD IN LOUISIANA & NATIONALLY?

### IN THE NEWS

*“Getting to Better Prep: A State Guide for Teacher Preparation Data Systems”*

[https://tntp.org/assets/documents/Getting\\_to\\_Better\\_Prep.pdf](https://tntp.org/assets/documents/Getting_to_Better_Prep.pdf)

As a result of the educator workforce reports, districts have used the data to guide workforce decisions related to educator compensation, placement, recruiting and hiring practices, as well as building partnerships with preparation providers to address their unique educator workforce needs.

Since the release of the first Regional Educator Workforce Report, district leaders have developed new partnerships or strengthened existing partnerships with preparation providers.

## WHAT'S NEXT FOR THE EDUCATOR WORKFORCE REPORTS?

The Department will continue to work with school system leaders and preparation providers to identify and address local workforce needs. The Department will also integrate workforce data into the district planning process and will move the workforce reports into an online platform that includes dynamic reporting.

