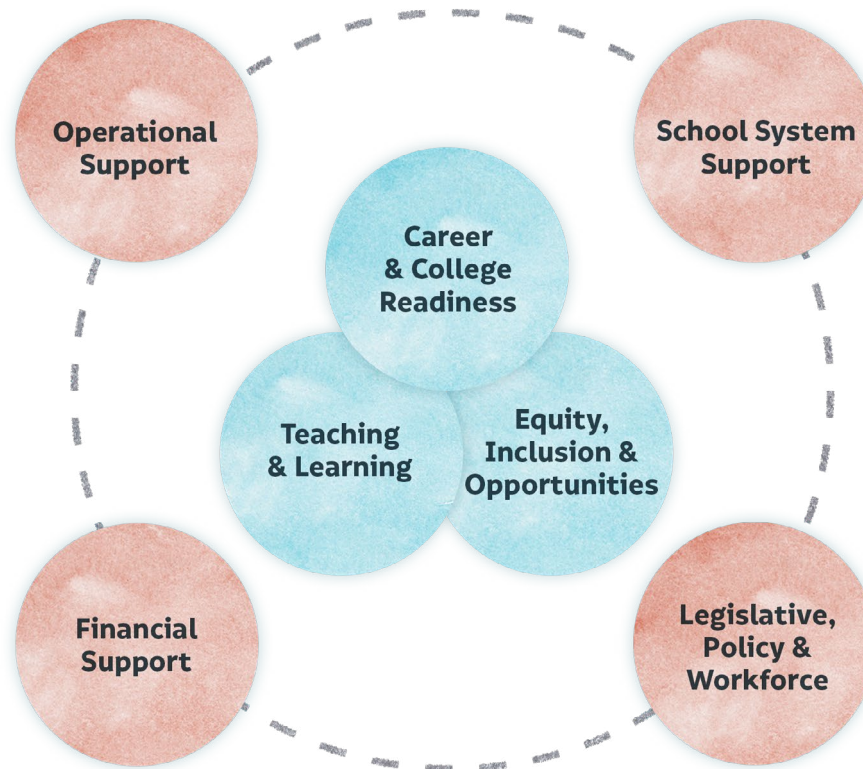


LDOE Support Structure



LDOE Executive Team



Superintendent

Dr. Cade Brumley

Louisiana
Department of Education



Chief of Staff

Dr. Quentina Timoll

Office of Operations

- Communications
- Internal Audits
- Human Resources
- Food & Nutrition
- Fiscal Operations
- Quality Assurance
- Federal Programs
- Grants Management
- Statewide Monitoring



Assistant Superintendent

Mr. Dana Peterson

Recovery School District



Superintendent

Mr. Ernest Garrett III

Special School District



Assistant
Superintendent

Dr. Jenna Chiasson

Office of Teaching
& Learning

- Early Childhood
 - Strategy
 - Operations
- Academic Content
- Educator Development
- Assessments, Accountability & Analytics



Assistant
Superintendent

Mr. Ken Bradford

Office of
Career & College
Readiness

- Foundational Years
- Quality Diplomas
- Postsecondary Readiness
- Pathway Initiatives & Readiness Supports



Assistant
Superintendent

Dr. Kelli Peterson

Office of
Equity, Inclusion
& Opportunities

- Portfolio Opportunities
- Diverse Learners
- Student Well-Being



Deputy
Superintendent

Mrs. Beth Scioneaux

Office of
School System
Financial Services

- School System Financial Support
- State and Federal Audit



Assistant
Superintendent

Dr. Keith Leger

Office of Legislative
Affairs, Policy &
Workforce Support

- BESE Policy
- Legislative Affairs
- Educator Workforce
 - Policy
 - Certification
- Healthy Communities



Assistant
Superintendent

Mr. Trey Folse

Office of School
System Relations

- Networks
- School Improvement
- Educator Excellence



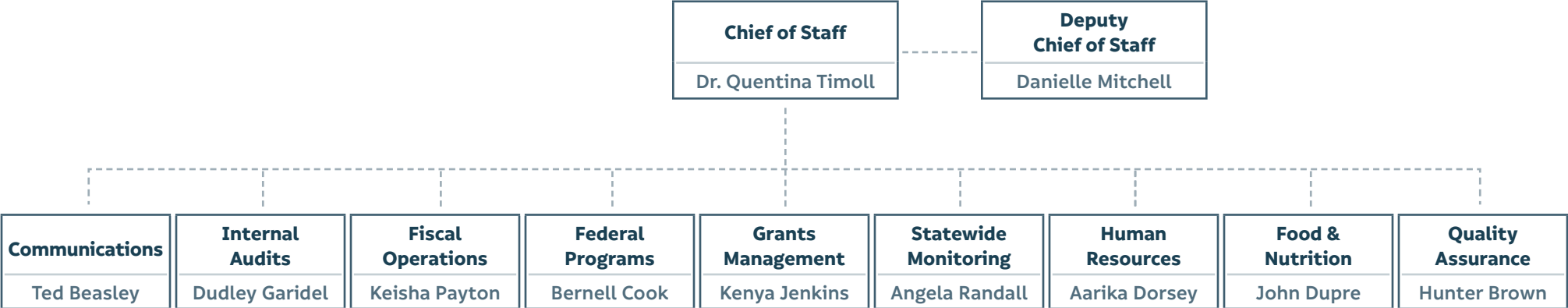
Executive Counsel

Mrs. Joan Hunt

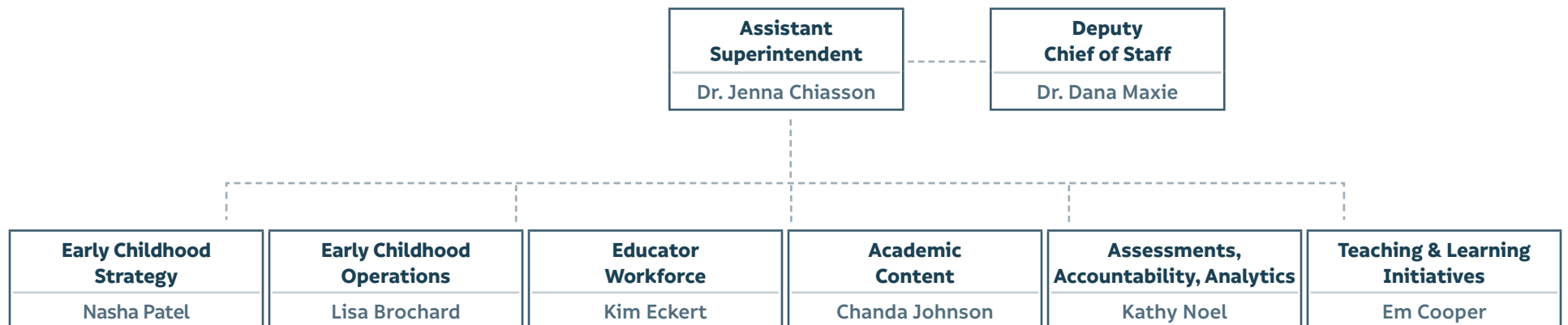
Legal

- Public Records Requests

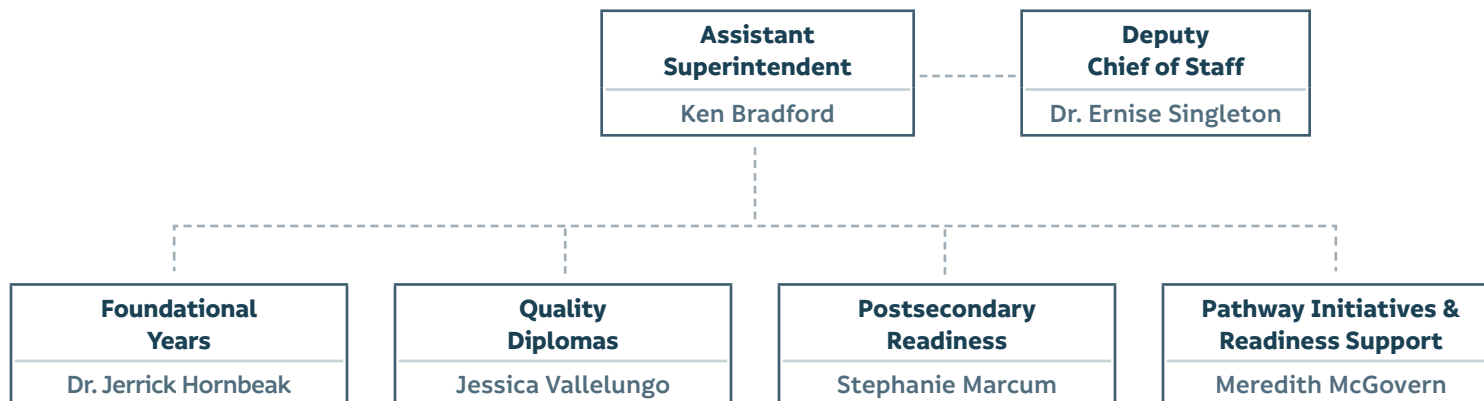
Office of Operations



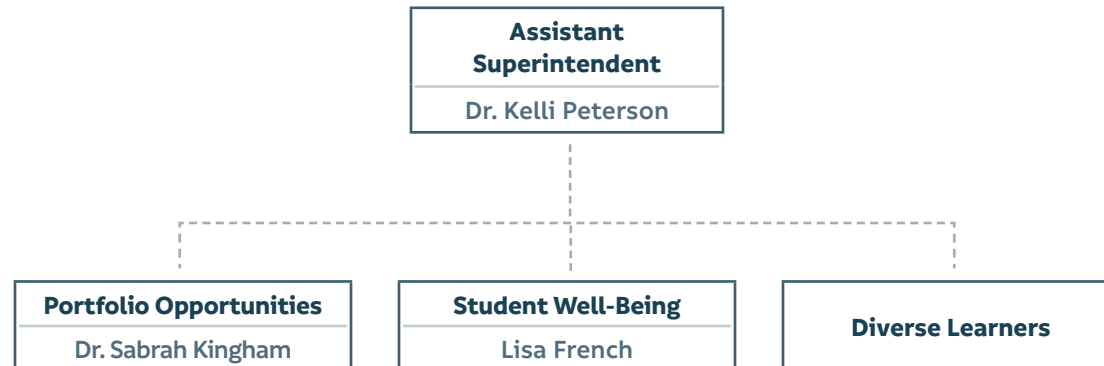
Office of Teaching & Learning



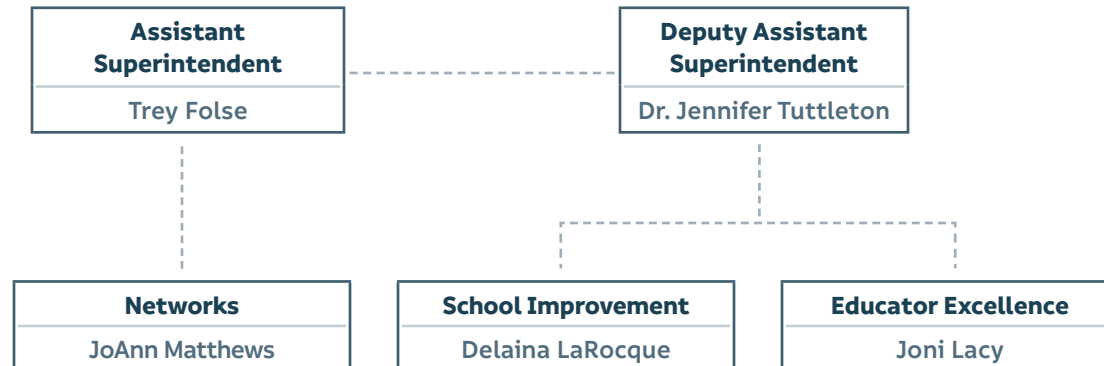
Office of Career & College Readiness



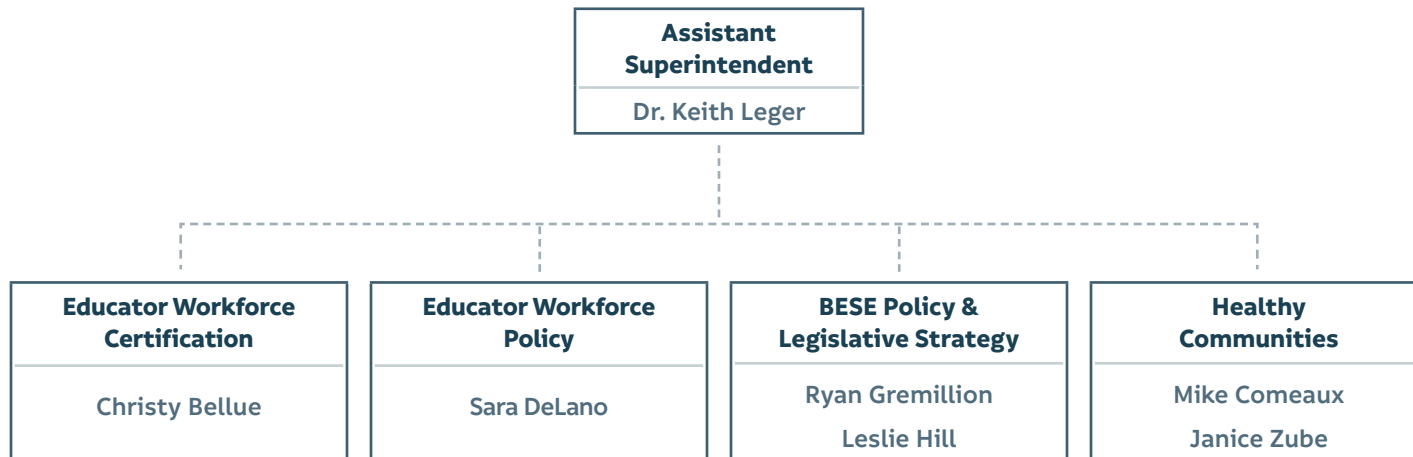
Office of Equity, Inclusion & Opportunities



Office of School System Relations



Office of Legislative Affairs, Policy & Workforce Support



Office of School System Financial Services

