



Supervisor Collaboration Agenda: Harvey Thursday, September 13, 2018

The Supervisor Collaboration events will provide supervisors across Louisiana with high-quality tools, resources and professional development to help them effectively lead in 2017-2018 and plan for 2018-2019.

Location:

Jefferson Parish School Board Building
501 Manhattan Blvd.
Harvey, LA 70056

Parking:

No specifics for this location. Parking is free

Agenda:

8:00 a.m. - 8:30 a.m.	Sign-in (Board Room)	9:10 a.m. - 10:00 a.m.	Session Rotation 1
8:30 a.m. - 9:00 a.m.	Collaboration Kick-off (Board Room)	10:10 a.m. - 11:00 a.m.	Session Rotation 2
		11:10 a.m. - 12:00 p.m.	Session Rotation 3

Preparation

All participants should **bring a fully charged laptop computer** with them to the event and [download session materials in advance](#).

Food and Hotels

Food will *not* be provided at the event. Click here for a list of [Harvey area hotel and food options](#).

Contact Us

Please contact your Network support team or DistrictSupport@la.gov with questions about this event.



Sessions

Participants will have the opportunity to choose **three** sessions that fit their needs and interests. Attendees from each LEA should coordinate with one another to ensure they get all the necessary information. All sessions are filled on a first come, first served basis.

Session Topics	Session Title	Session Description	Room
ROTATION 1			
Academic Content Assessment	LEAP 360: Updates and Resources	Participants will explore new LEAP 360 resources.	Room 1709
Accountability	Policy Updates for 2018-2019 and School Report Card Preview and Planning	This session will review what's new in school and school system accountability for the 2018-2019 school year, and will provide a preview of school report card changes coming this fall.	Board Room
Academic Content SPED	Students with Significant Disabilities: Eligibility and Instructional Supports	Participants will learn about proper eligibility of students taking the alternative assessment. This session will provide clarity on state guidelines, the required documentation in SER, and the instructional supports provided to ensure high quality instruction for these students. (NOTE: This session repeats at Rotation 3.)	Room 1701
Academic Content SPED	Implementation of TS GOLD for OSEP Assessment	To support your transition from AEPS to TS GOLD for the assessment of students with disabilities age 3-5, this session will focus on site administration of the TS GOLD OSEP site. Also, recommendations will be provided to help your teachers and service providers manage their assessment caseloads and to collaborate effectively to ensure timely and accurate assessment.	Room 1703
Assessment ELL	English Language Proficiency Screener: Overview of New Screening Instrument	Participants will be informed of new screening instrument for English Learners and learn about the administration protocol.	Room 2505
Early Childhood	Early Childhood Policy Updates for 2018-2019 and Performance Profile Preview and Planning	Early Childhood accountability and eligibility policy updates for 2018-2019 will be reviewed for lead agencies and plans for the release of 2017-2018 Performance Profiles will be discussed.	Room 2509

Note: All of the session information in this table is subject to change.

Session Topics	Session Title	Session Description	Room
Student Opportunities	Increasing Student Access to Financial Aid Planning	The session will review the financial aid policy, along with discussing strategies school systems/schools can use to accomplish their goals.	Room 2508
Talent	Quality Implementation of Mentor Teachers and Content Leaders	This session will provide guidance on how to maximize the impact of the Content Leader and Mentor Teacher roles in schools. “Laptop Required”	Room 1707
Analytics	SER Data Systems	Participants will review SER data system changes implemented for the 2018-19 school year and SER data submission requirements: managing student services, claiming jurisdiction, entering evaluations, submitting IEPs, and managing compliance with state and federal reporting using SER reports. (NOTE: This session overlaps from 9:10 – 10:30 and repeats in the afternoon from 2:30 – 4:00.)	Room 2510
ROTATION 2			
Academic Content	K-2 Pilot Tools	Participants will examine the 4 pilot tools and how they will be utilized to evaluate children’s classroom experience and mastery of standards. Then, explore how data and feedback from the pilots will help inform K-2 policy anticipated to be in effect statewide in 2019-2020.	Room 1707
Academic Content Assessment	LEAP 360: Assessment Inventory	LEAP 360 supports districts and schools in the effort to significantly reduce time on assessments. This session will provide assessment inventory resources to help districts evaluate the amount and quality of district and school assessments in order to reduce testing time.	Room 1701
Assessment Academic Content	New LEAP 2025 Science Assessments and Curricular Resources	Participants will learn how the new LEAP 2025 science assessments and resources support the instructional shifts inherent in the Louisiana Student Standards for Science.	Room 1709
Accountability	Using the Calculator to Estimate School Performance Scores	In this session, LDOE staff will lead participants through the process of entering data in the school performance score calculator from sample data certification rosters to estimate scores.	Board Room

Note: All of the session information in this table is subject to change.

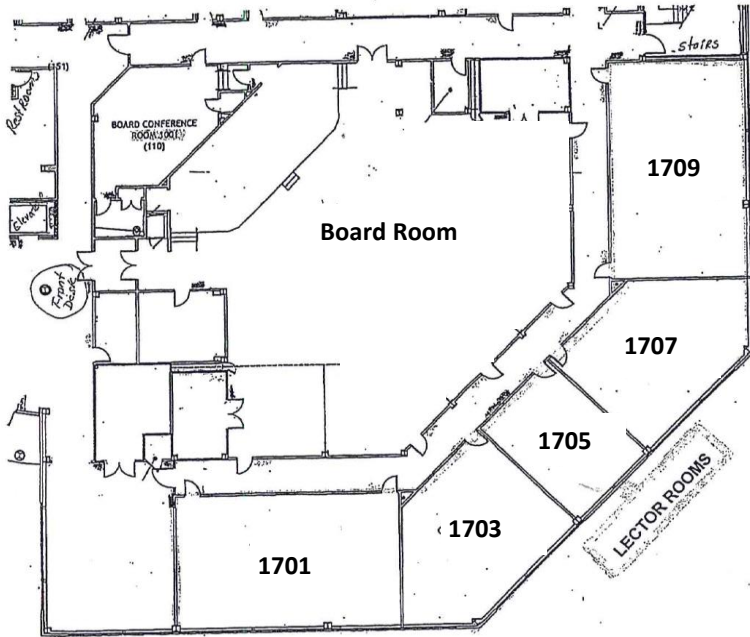
Session Topics	Session Title	Session Description	Room
Rotation 2 cont'd			
Early Childhood	Supporting Improvement for Low Performing Early Childhood Sites	The Department will review its strategic plan to engage and to support low-performing early childhood sites.	Room 2509
Accountability	Measuring Progress to English Language Proficiency	This session will provide an update on the new English Language Proficiency student progress accountability measure. LDOE staff will explain the policy recommendations that BESE will consider in October.	Room 2505
Student Opportunities	STEM Diploma Pathways	This session will provide an overview of two new diploma pathways available to high school students—Environmental Protection and Sustainability; and LSU Digital Design and Emergent Media—that incorporate the STEM disciplines. The LSU Digital Design and Emergent Media pathway seeks to address the constantly transforming field of digital media, while the Environmental Protection and Sustainability pathway will address the rapid erosion of the coastline and its threat to major LA industries such as oil and gas, and fishing. Both of these rigorous pathways provide Louisiana students with the knowledge and skills to compete for high demand jobs that support the future of the Louisiana economy.	Room 2508
Student Opportunities	The Intersection of Quality IGPs and The New Career Readiness Course	This session will focus on the new innovative, competency-based career development course that will expose all Louisiana students to career opportunities through inquiry and authentic work experiences, and inspire them to lay the foundation for their career and life success in high school. The LDOE plans to pilot the course in schools in the 2018-19 school year, with full state-wide adoption slated for the 2020-21 school year as the State phases out its existing course, Journey to Careers, which is an option to meet the credit requirement for the State's Career Diploma.	Room 1703
Analytics	eScholar Data Submissions	Participants will review Uniq-ID and DirectMatch data system changes implemented for the 2018-19 school year and data submission requirements. (NOTE: This session overlaps from 10:40 – 12:00 and repeats in the afternoon from 1: 10 – 2:30.)	Room 2510

Note: All of the session information in this table is subject to change.

Session Topics	Session Title	Session Description	Room
ROTATION 3			
Academic Content	Using the Curriculum Implementation Observation Tools	Participants in this session will explore the recently released ELA and Math Observation Tools to be used by the LDOE during the Early Phase of Redesign/SRCL grant implementation.	Board Room
Academic Content Assessment	First Year DTC and Accountability Contact Orientation	First year DTCs and Accountability Contacts will gain insight on statewide assessments, articulate the roles and responsibilities of the DTC, and review resources available for assessment and accountability administration.	Room 1703
Academic Content Social Studies	Social Studies Companion Documents	This session will provide an overview of the Social Studies Companion Documents, as well as guidance on how educators should use these documents to increase the effectiveness of Social Studies instruction. The Social Studies Companion Documents prioritize the content to be taught for each standard and are aligned with the LEAP 2025 assessment. This session is geared for those who supervise Social Studies in 3rd-8th grades and US History.	Room 1709
Accountability	Communicating Fall School Performance Scores to Families	This session provides school system leaders with talking points and a toolkit for communicating fall school performance scores to families and their communities.	Room 2505
Accountability	2017-2018 LEAP 2025 Results: Explore the Data	In this session, LDOE staff will share a deeper analysis into statewide LEAP 2025 data trends, including the new student progress measure. Participants will gain a greater understanding of statewide trends and learn new ways to dissect their own results.	Room 1701
Early Childhood	The Challenges Ahead for Louisiana's Early Childhood Care and Education Network	The Early Childhood Team will lead discussion about historic expectations for community networks and what the influences are for the future.	Room 2509
Academic Content SPED	Students with Significant Disabilities: Eligibility & Instructional Supports	Participants will learn about proper eligibility of students taking the alternative assessment. This session will provide clarity on state guidelines, the required documentation in SER, and the instructional supports provided to ensure high quality instruction for these students.	Room 2508

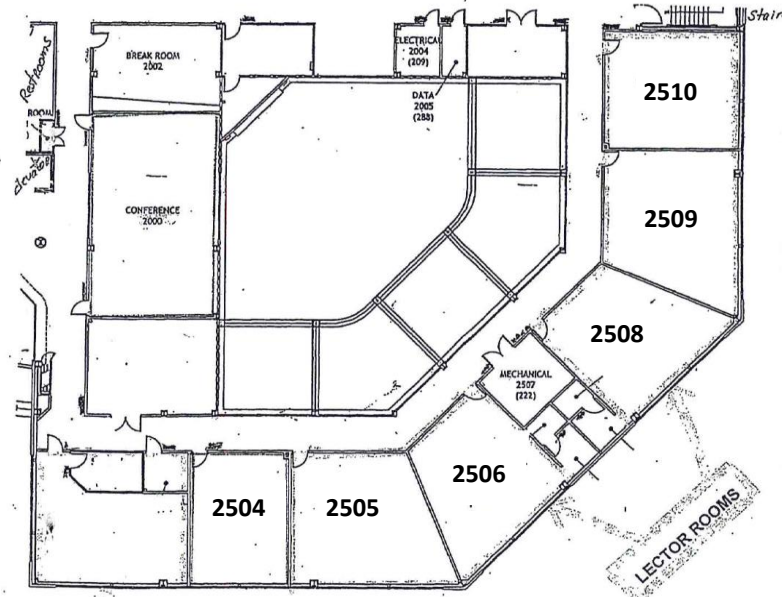
Note: All of the session information in this table is subject to change.

Session Topics	Session Title	Session Description	Room
Rotation 3 cont'd			
Academic Content SPED	Making Assistive Technology Heroes: Accessing Math Standards with AT	The session will demonstrate for participants how to incorporate assistive technology tools and equipment into Tier I Math curriculum to support the learning needs of students with significant disabilities.	Room 1707
SPECIAL NOTE			
Analytics	SPC and SIS Data Submissions	Participants will review SPC and SIS data system changes implemented for the 2018-19 school year and data submission requirements for SPC and SIS. (NOTE: This session is offered in the afternoon from 1:10 – 2:30.)	Room 2510



1st Floor

Jefferson Parish School Board Office



Child Search

2nd Floor

Note: All of the session information in this table is subject to change.