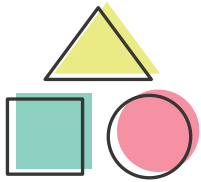


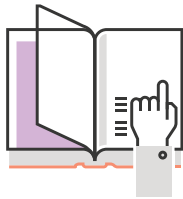
EDUCATOR RESOURCE GUIDE

The Louisiana Department of Education is excited to embark on another school year with educators across the state as we collectively continue to raise expectations for students and schools. Our students are smart and capable and deserve the opportunity to succeed at the highest level.

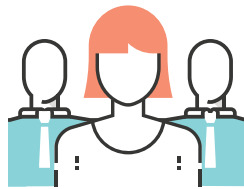
Through the Every Student Succeeds Act, Louisiana has a unique opportunity to create a birth to 12 education system that recognizes student progress and achievement, with a focus on the following priorities:



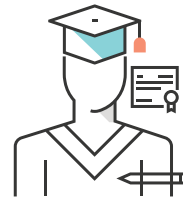
**UNIFIED EARLY
CHILDHOOD SYSTEM**



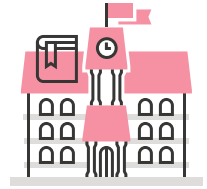
**ACADEMIC
ALIGNMENT OF
STANDARDS,
ASSESSMENTS, AND
PROFESSIONAL
DEVELOPMENT**



**EDUCATOR AND
LEADER PREPARATION**



**PATHWAYS
TO COLLEGE
OR A CAREER**



**SUPPORT FOR
STRUGGLING
SCHOOLS**

During the 2018-2019 school year, the Department will continue to provide educators with tools and resources to support these priorities, and the specific work below to strengthen students' attainment of college and career readiness skills.

1

Adopting and using high-quality curricula: Through a teacher-led, [curriculum review process](#), Louisiana teachers, including [Content Leaders](#) and [Mentor Teachers](#), have the tools they need to provide high-quality instructional coaching to all teachers and students across the state.

2

Support for struggling students: The Department is committed to supporting struggling students, and helping teachers teach diverse learners through the use of the [English learner](#) and [students with disabilities](#) guidebooks, early and accurate identification of students with special needs, and better support for students in alternative settings.

3

Supporting math and science instruction and assessments: In order to meet the needs of Louisiana's growing STEM industry, students will need to build stronger math and science skills through new [STEM pathways](#) and better aligned [math and science assessments](#) to measure their progress towards those skills.

► [TEACHER RESOURCES AND SUPPORT](#) ◀

► [PRINCIPAL RESOURCES AND SUPPORT](#) ◀

► [SCHOOL SYSTEM RESOURCES AND SUPPORT](#) ◀

TEACHER RESOURCES AND SUPPORT

MEETINGS AND EVENTS

- [2018-2019 School System Support Calendar](#)
- [Annual Teacher Leader Summit](#)
- [2018 Teacher Leader Collaborations](#)

COMMUNICATION STREAMS

- [Teacher Leader Newsletter](#)
- [Counselor Connection Newsletter](#)
- [Early Childhood Connection Newsletter](#)
- [Believe and Prepare Newsletter \(Mentors\)](#)

GENERAL RESOURCES: What are the key online resources I need to be successful this year?

- [Teacher Support Toolbox](#)
- [Counselor Support Toolbox](#)
- [Teacher Leaders Library](#)
- [Instructional Resources by Age or Grade](#)
- [Instructional Resources by Subject](#)
- [Mentor Teacher Training](#)
- [Content Leader Training](#)

PLANNING & INSTRUCTIONAL RESOURCES:

What should my students know and be able to do and how do I monitor their progress?

SPECIAL POPULATIONS	<ul style="list-style-type: none"> • Louisiana Connectors for Students with Significant Disabilities • Special Populations Library • Students with Disabilities Guidebook 	<ul style="list-style-type: none"> • LA Connectors for English Learners • English Learner Library • English Learner Guidebook • Diverse Learners Guide
EARLY CHILDHOOD	<ul style="list-style-type: none"> • Louisiana Birth to Five Early Learning and Development Standards 	<ul style="list-style-type: none"> • Linking Tier I Curriculum to GOLD • Connecting CLASS and Tier I Curriculum
ELA	<ul style="list-style-type: none"> • Louisiana Student Standards for ELA 	<ul style="list-style-type: none"> • ELA Guidebooks 2.0
MATH	<ul style="list-style-type: none"> • Louisiana Student Standards for Math 	<ul style="list-style-type: none"> • Louisiana Guides to Implementing Tier 1 Curriculum • Tier 1 Remediation Tools
SCIENCE	<ul style="list-style-type: none"> • Louisiana Student Standards for Science 	<ul style="list-style-type: none"> • Science Scope and Sequence Documents
SOCIAL STUDIES	<ul style="list-style-type: none"> • Social Studies Grade Level Expectations 	<ul style="list-style-type: none"> • Social Studies Scope and Sequence and Companion Documents
HIGH SCHOOL	<ul style="list-style-type: none"> • Jump Start Graduation Pathways • All Things Jump Start Portal 	<ul style="list-style-type: none"> • Special Education Guidance for High School Students
GOAL SETTING & ASSESSMENTS	<ul style="list-style-type: none"> • 2018-2019 Assessment Calendar • Assessment Guidance Library including Sample Items (18-19 Assessment Guides <i>coming in Aug</i>) • Teacher's Guide to LEAP 360 	<ul style="list-style-type: none"> • LEAP 360: Diagnostics, Interims, and EAGLE, K-2 Tasks • Goal-Setting Templates and Sample Goals • GOLD Guidance 2018-2019 (pre-K)

FAMILY ENGAGEMENT RESOURCES: How do I engage families in student learning?

- [Family Support Toolbox](#)
- [Parent Back-to-School Guides: For students in grades 3-12, English Learners, and students with disabilities \(PK-2 and translated versions *coming soon*\)](#)
- [Louisiana STEM Pathways](#)
- [Parent Guides to Louisiana State Tests and Results](#) available in Spanish, Vietnamese, and Arabic
- [Jump Start Brochure](#)

PRINCIPAL RESOURCES AND SUPPORT

MEETINGS AND EVENTS

- [2017-2018 School System Support Calendar](#)
- [Louisiana Principals Fellowship](#)
- [Principal Collaborations](#)

COMMUNICATION STREAMS

- [Weekly School System Newsletter](#)
- [Counselor Connection Newsletter](#)
- [Early Childhood Connection Newsletter](#)
- [Teacher Leader Newsletter](#)
- [Believe and Prepare Newsletter \(Mentors\)](#)

GENERAL RESOURCES: What are the key online resources I need to be successful this year?

- [Principal Support Toolbox](#)
- [Teacher Support Toolbox](#)
- [Counselor Support Toolbox](#)
- [English Learner Library](#)
- [Special Populations Library](#)
- [Compass Library](#)
- [All Things Jump Start Portal](#)

PLANNING & INSTRUCTIONAL RESOURCES:

What should my students know and be able to do and how do I monitor their progress?

GUIDEBOOKS

- [Principal Guidebook](#)
- [High School Guidebook \(update coming soon\)](#)
- [Students with Disabilities Guidebook](#)
- [English Learner Guidebook](#)
- [PreK-3 Guidebook for Sites and System Leaders](#)
- [TAP and NIET Best Practice Guidance](#)

INSTRUCTIONAL SUPPORT

- [PD Vendor Guide](#)
- [Supplemental Course Academy](#)
- [Course Choice Provider Scheduling Tool](#)

GOAL SETTING & ASSESSMENTS

- [2018-2019 Assessment Calendar](#)
- [Assessment Guidance Library including Sample Items \(18-19 Assessment Guides coming in Aug\)](#)
- [LEAP 360: Diagnostics, Interims, and EAGLE, K-2 Tasks](#)
- [A District's Guide to LEAP 360](#)
- [GOLD Guidance 2018-2019 \(pre-K\)](#)
- [Goal-Setting Templates and Recommended Targets](#)

WORKFORCE RESOURCES: How do I build capacity within my school to ensure student success?

- [Mentor Teacher Training](#)
- [Content Leader Training](#)
- [District Workforce Reports](#)
- [Regional Workforce Reports](#)
- [Teacher Effectiveness Data](#)

FAMILY ENGAGEMENT RESOURCES: How can my school engage families in student learning?

- [Family Support Toolbox](#)
- [Parent Back-to-School Guides: For students in grades 3-12, English Learners, and students with disabilities \(PK-2 and translated versions coming soon\)](#)
- [Louisiana STEM Pathways](#)
- [Orleans Parish District Level Funding Formula including MFP State and Local Allocations coming soon](#)
- [Parent Guides to Louisiana State Tests and Results available in Spanish, Vietnamese, and Arabic](#)
- [Jump Start Brochure](#)
- [Family Engagement Policies and Best Practices](#)
- [Internet Safety Flyer](#)

SCHOOL SYSTEM RESOURCES AND SUPPORT

MEETINGS AND EVENTS

- [2018-2019 School System Support Calendar](#)
- [Quarterly Supervisor and Principal Collaboration Events](#)
- [Louisiana Principals Fellowship](#)
- [Teacher Leader Collaborations and Annual Summit](#)

COMMUNICATION STREAMS

- [Weekly School System Newsletter](#)
- [Weekly Charter School Newsletter](#)
- [Weekly Nonpublic Newsletter](#)
- [Early Childhood Connection Newsletter](#)
- [Believe and Prepare Newsletter \(Mentors\)](#)
- [Monthly Superintendents Call](#)
- [Monthly School System Planning Call](#)
- [Assessment & Accountability Monthly Call](#)
- [Monthly Data Manager Webinar](#)
- [Monthly Special Education Leader Webinar](#)

GENERAL RESOURCES: What are the key online resources we need to be successful this year?

- [School System Support Toolbox](#)
- [Teacher Support Toolbox](#)
- [Principal Support Toolbox](#)
- [Counselor Support Toolbox](#)
- [Special Populations Library](#)
- [English Learner Library](#)
- [Early Childhood Resources](#)
- [All Things Jump Start Portal](#)
- [2018-2019 Network Map](#)
- [School Redesign Support](#)
- [2018-2019 System Enhancements](#)

PLANNING & INSTRUCTIONAL RESOURCES:

What should students know and be able to do and how do we monitor their progress?

GUIDEBOOKS

- [2018-2019 School System Planning Guide](#)
- [Principal Guidebook](#)
- [High School Guidebook \(update coming soon\)](#)
- [Students with Disabilities Guidebook](#)
- [English Learner Guidebook](#)
- [Data Sharing Guidance](#)
- [PreK-3 Guidebook for Sites and System Leaders](#)
- [Guide to Early Childhood Curriculum, Assessments, and Professional Development](#)
- [TAP and NIET Best Practice Guidance](#)

INSTRUCTIONAL SUPPORT

- [PD Vendor Guide](#)
- [Instructional Materials Reviews](#)
- [Supplemental Course Academy](#)
- [Course Choice Provider Scheduling Tool](#)
- [Guidance on Using CLASS for COMPASS](#)

GOAL SETTING & ASSESSMENTS

- [2018-2019 Assessment Calendar](#)
- [2018-2019 Month-by-Month Checklist](#)
- [Assessment Guidance Library including Sample Items \(18-19 Assessment Guides coming in Aug\)](#)
- [A District's Guide to LEAP 360](#)
- [LEAP 360: Diagnostics, Interims, and EAGLE, K-2 Tasks](#)
- [K-3 Literacy Assessment Guide](#)
- [Compass System 2017-2018](#)
- [Goal-Setting Templates and Recommended Targets](#)
- [GOLD Guidance 2018-2019 \(pre-K\)](#)

WORKFORCE RESOURCES: How do we build capacity within our schools to ensure student success?

- [Mentor Teacher Training](#)
- [Content Leader Training](#)
- [2018 Sample Residency Program MOU](#)
- [District Workforce Reports](#)
- [Regional Workforce Reports](#)
- [Teacher Effectiveness Data](#)

FAMILY ENGAGEMENT RESOURCES: How do we engage families in student learning?

- [Family Support Toolbox](#)
- [Parent Back-to-School Guides: For students in grades 3-12, English Learners, and students with disabilities \(PK-2 and translated versions coming soon\)](#)
- [Louisiana STEM Pathways](#)
- [Parent Guides to Louisiana State Tests and Results available in Spanish, Vietnamese, and Arabic](#)
- [Jump Start Brochure](#)
- [Family Engagement Policies and Best Practices](#)