



Preparation Provider Monthly Webinar

April 28, 2021

Agenda

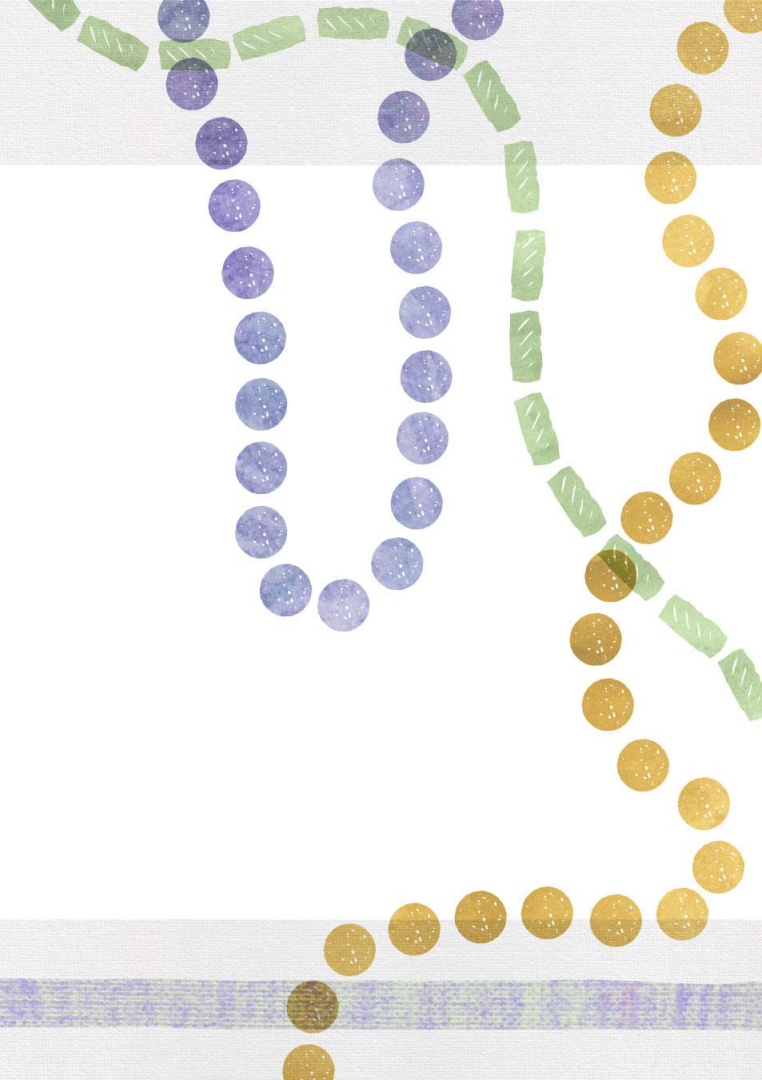
Accountability Updates

Teacher Leader Summit

Mentor Credential

Mentor/Content Leader Training Providers

Accountability Updates



Title II Reporting

The Title II Institution and Program Report Card (IPRC) certification window is now open and will close on April 30th. Please login to [Title II](#) to certify your report.

Please contact Melissa Anders (Melissa.Anders@laregents.edu) at the Board of Regents or Erich Schultz (Erich.Schultz@la.gov) at the LDOE if you have any questions or if you would like to schedule time to discuss.

Supports for Teacher Preparation Providers

The LDE proposed the following to support teacher preparation providers in **strengthening literacy training**:

Professional Development Funding

The LDE will provide funding for literacy faculty to attend best-in-class professional development grounded in research-based reading instruction. Teacher preparation providers that received a Level 2 (Needs Improvement) in the **Preparation Program Experience** domain that covers literacy training are urgently requested to attend. BESE will receive a report outlining which teacher preparation providers participated and key insights in spring 2022.

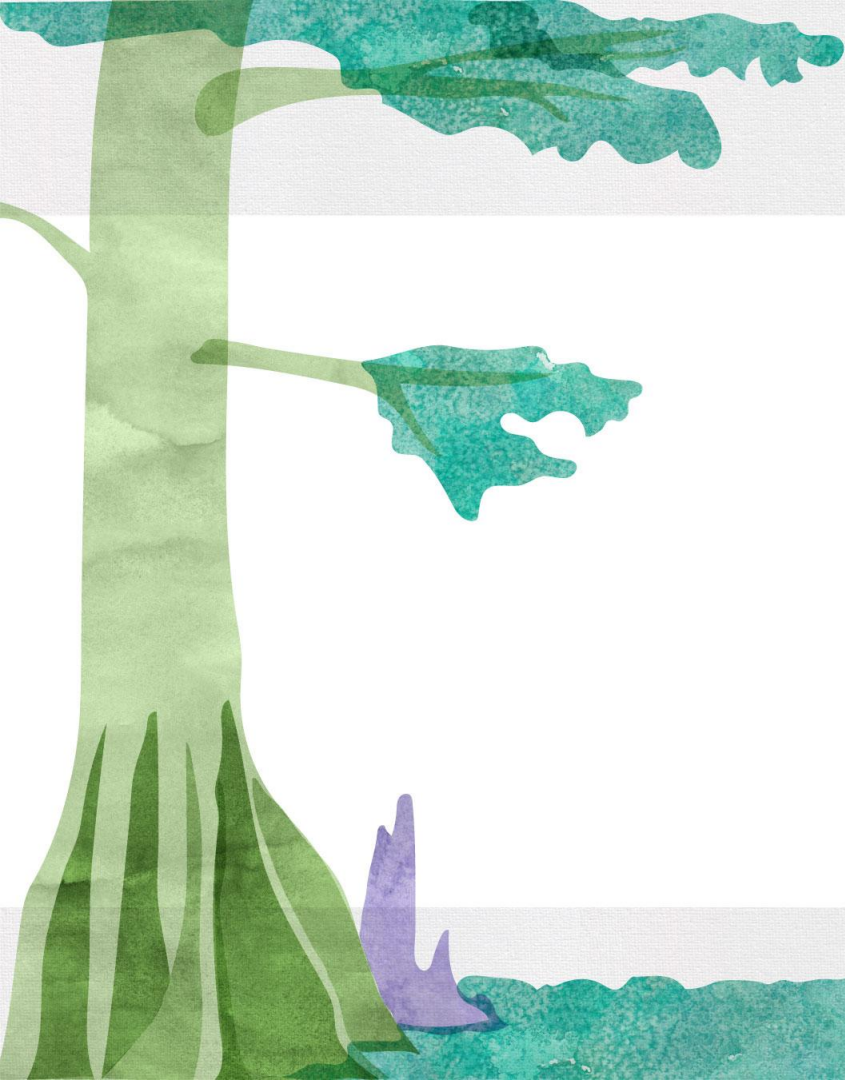
Clarifying Expectations Relative to Literacy Coursework

Louisiana Revised Statute requires PK-3 and Elementary (1-5) programs to include nine hours of literacy coursework. The LDE will convene a workgroup consisting of teacher preparation providers, school system leaders, and literacy experts to clarify expectations relative to the coverage of research-based literacy instruction within these courses and will bring updated policy for BESE's consideration in summer 2021.

Supports for Teacher Preparation Providers

Assessing literacy knowledge and skills as part of initial licensure

The LDE will convene a workgroup consisting of teacher preparation providers, school system leaders, and literacy experts to identify a teaching reading exam to replace the current pedagogy exams for Pk-3 and Elementary (1 - 5) programs.



Teacher Leader Summit

Teacher Leader Summit Seats Available



The 2021 Teacher Leader Summit is now open to the general public. All educators and administrators across the state are invited and encouraged to join!

The 2021 Teacher Leader Summit will take place May 25–27 at the Morial Convention Center in New Orleans. Both the Department and the Convention Center are taking measures to promote the health and safety of all participants throughout the week.

Please Contact LDOEEvents@la.gov for more information

Teacher Leader Summit: Overview Document

General Summit information can be found in the [overview document](#) posted to the [Teacher Leader Library](#).

This document includes information on the below topics and is updated routinely:

- what to bring
- health and safety protocols
- hotel rooming blocks
- cancellations, refunds, transfers, and exchanges

Teacher Leader Summit: The Virtual Series

To maximize the [delivery of content](#) and educator development, The Teacher Leader Summit: The Virtual Series will take place from June 1 - 11, and sessions will be accessed remotely. The format will be similar to the Virtual Series offered during Spring 2020.

- There will be a max overall registration limitation of 8,000.
- The Department is not allocating seats. Registration will be on a first come, first served basis.
- Paid ticket holders of the Teacher Leader Summit in-person event will receive an access code allowing them to register for and participate in the Virtual Series at no additional cost.
 - Each code will be one-time use and must be used only by the original ticket holder. Codes are not transferable.

Teacher Leader Summit: The Virtual Series

[Registration](#) for the Teacher Leader Summit: The Virtual Series opened in April. Tickets are inclusive of all days of the event.

Ticket Type	Purchasing Window	Ticket Price
Early Bird Registration	April 1-25	\$50.00
Regular Registration	April 26 - sell out	\$65.00

The session schedule and app will be released to early bird ticket holders on May 10 and May 12 for regular registrants.

Please contact LDOEvents@la.gov with questions.



Mentor Credentials

Mentor Teacher Credential

Beginning in September 2020, every teacher who serves as the Mentor of an undergraduate or post-baccalaureate candidate must hold the Mentor Ancillary Certificate or the Provisional Mentor Ancillary Certificate.

In August 2020 BESE allowed a waiver of the Mentor credential for the 2020-2021 school year. This was prompted by a shortage of credentialed Mentor teachers willing to host residents specifically in certain content areas such as Music, Physical Education, as well as others 6-12 content areas. In September 2020 the Mentor workgroup was created to examine the issue of Mentor shortages.

The purpose of the Mentor teacher workgroup was to examine what steps might be needed in order to ensure a robust pool of effective mentor teachers in all content areas and grade bands.

Mentor Workgroup Recommendations

The workgroup had several recommendations to achieve the goal of increasing the pool of effective mentors. They included:

1. Honoring Previous Training and Experience
2. Removing the Content- Specific Assessments
3. Creating a Mentor Support Guide
4. Creating an Add-On Mentor Endorsement
5. Exploring Mentor Assessment Content and Scoring
6. Granting a one year extension for those currently holding Provisional Mentor Certificate

These recommendations were shared with BESE members at the March meeting. The policy changes were brought to the board in April.

Mentor Waiver

At the March BESE meeting the Board approved an extension of the waiver of policy, contained in Bulletin 746, *Louisiana Standards for State Certification of School Personnel*, and Bulletin 996, *Standards for Approval of Teacher and/or Educational Leader Preparation Programs*, regarding the requirement that all undergraduate residents and post-baccalaureate candidates be placed with mentor teachers holding the ancillary mentor teacher certificate, the ancillary provisional mentor teacher certificate, or the Supervisor of Student Teaching certificate, for the 2021-2022 school year, with the contingencies on the following slide.

Mentor Waiver

Mentor teacher waivers will be granted on a case-by-case basis through the application process established by the LDE and at no fee to the applicant, school system, or teacher preparation provider.

The waiver will be issued by the LDE for educators highly recommended by the mentor's principal and who possess one or more of the following qualifications:

1. Two years of Highly Effective Compass ratings;
2. National Board Certification;
3. Statewide or national distinction for excellence in teaching;
4. Experience as a TAP mentor, master teacher, executive master teacher, or certified TAP evaluator;
5. Content leader experience, as evidenced by participation in Content Leader training or redelivery of professional development; or
6. Master's or doctorate in education and exemplary experience hosting student teachers.

Policy Updates

At the April BESE meeting the board approved changes to Bulletin 746 regarding mentor credential requirements. These updates include:

1. Honoring Previous Training and Experience
 - a. EDL or previous administrative certifications
 - b. NIET trained evaluators
 - c. CLASS trained evaluators
 - d. Supervision of Student Teachers
2. Removing the Content- Specific Assessments
3. Creating an Add-On Mentor Endorsement

These revisions will not begin the Notice of Intent process (advertised in the State Register) until June 20, 2021. The policy will go into effect **September 20, 2021**.

Policy Updates

Excerpts from Bulletin 746

4. Individuals who currently hold or are eligible to hold a Louisiana Administrative or Supervisory Credential as listed in Chapter 7 of this Part **may apply** for the Mentor Teacher add-on endorsement, which makes the individual eligible to serve as a mentor of undergraduate or post-baccalaureate teacher residents without meeting the eligibility requirements for a mentor teacher ancillary certificate outlined in Chapter 3 of this Part
5. Individuals who currently hold or are eligible to hold National Institute for Excellence in Training (NIET) Teacher Evaluator Training Certification **may apply** for the Mentor Teacher add-on endorsement, which makes the individual eligible to serve as a mentor of undergraduate or post-baccalaureate teacher residents without meeting the eligibility requirements for a mentor teacher ancillary certificate outlined in Chapter 3 of this Part.
6. Certified CLASS® observers **may apply** for the Mentor Teacher add-on endorsement, which makes the individual eligible to serve as mentors of undergraduate or post-baccalaureate teacher residents without meeting the eligibility requirements for a mentor teacher ancillary certificate outlined in this Section.

Policy Updates

Excerpts from Bulletin 746

An authorization to serve as a mentor of undergraduate or post-baccalaureate teacher residents may be **added to** a standard teaching certificate for teachers meeting the following requirements:

1. Certification. Individuals who have completed a BESE-approved mentor teacher training program and have a passing score on the Louisiana mentor teacher assessment series will be issued a mentor teacher endorsement.
 - a. Eligibility requirements for the mentor teacher ancillary certificate are as follows. A teacher must:
 - i. hold, or be eligible to hold, a valid type C, level 1 or higher Louisiana teaching certificate;
 - ii. successfully complete a BESE-approved mentor teacher training program; and
 - iii. have a passing score on the Louisiana mentor teacher assessment series.

Next Steps

1. Continue identifying Mentor Teachers for residency placements for the 2021-2022 school year.
2. Determine if the Mentor currently holds or is eligible for the ancillary certificate.
3. Determine if the Mentor will be eligible under new policy revisions.
4. Apply for waiver for anyone who will not be eligible for provisional, ancillary, or add on Mentor credential.
5. Apply for ancillary mentor certificate or mentor add on certificate for those who are eligible.

Mentor/Content Training Providers



Welcome New Providers!

Content Leader

ELA: TNTP, Instruction Partners

Math: Eureka Math, TNTP

Science: TNTP

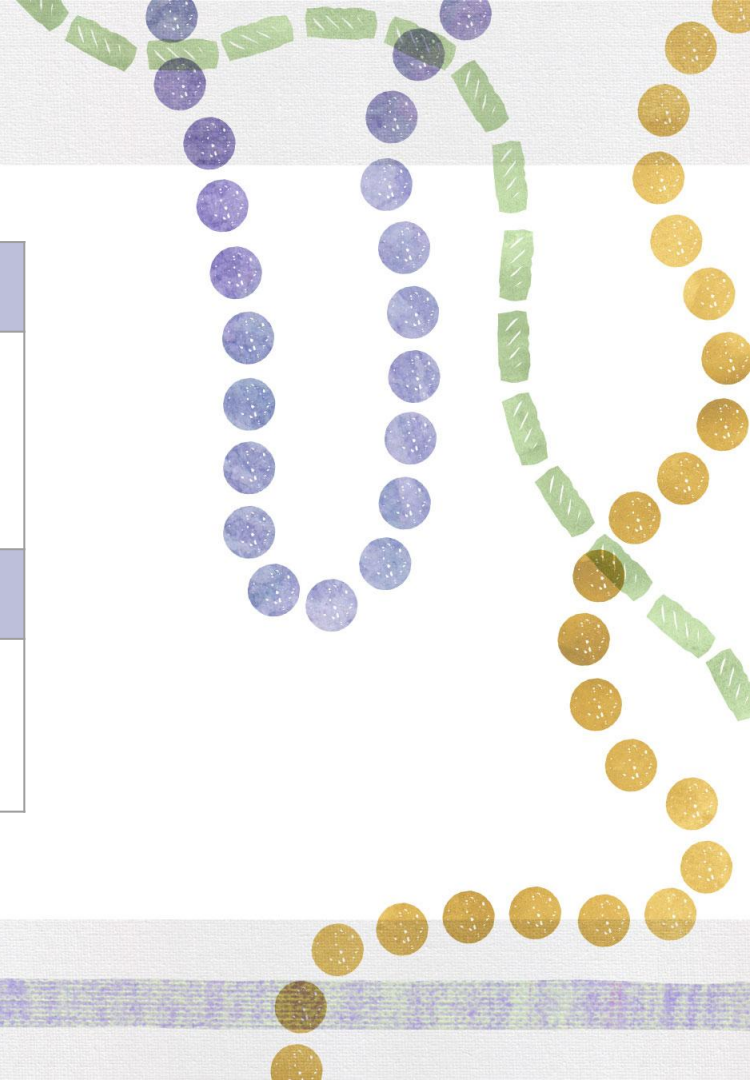
K-2 Literacy: TNTP, UT Dana, APEL, Keys to Literacy

Mentor Teacher

Grant Parish

University of Holy Cross

National Institute of Excellence in Teaching (NIET)



Approved Provider List

The Department is in the process of updating the [Mentor and Content Leader Approved Provider List](#) as a resource for school systems of the approved providers for each training pathway.

To update information listed for your program (price, primary contact, etc.) email BelieveandPrepare@la.gov with the updates you would like to make by **Friday, May 7.**

BESE Reporting

Data Collection & Verification

Biannually, BESE will receive effectiveness data of each approved provider offering Mentor or Content Leader training.

Effectiveness data will include Louisiana Mentor assessment series or Louisiana Content Leader assessment series passage rates and earned facilitator micro-credentials.

All training providers will have an opportunity to verify the data that is used to create the report. The data verification period for October 2021 BESE reporting is **August 16- September 3.**

October 2021 BESE Report

Provider Information	Assessment Passage Rates	Training Facilitation
<ul style="list-style-type: none">• Name of Provider• Approved Training Pathways as of 7/31/2020	<ul style="list-style-type: none">• Total Number of Participants enrolled between 8/1/2018 through 7/31/2020• Percentage of those participants that completed training and assessments within 12 months of training start date	<ul style="list-style-type: none">• Total Number of Facilitators• Number of facilitators that led training during 8/1/2018-7/31/2020.• Number of facilitators that meet each of the following criteria:<ul style="list-style-type: none">○ Completed training○ Completed assessment series○ Completed Facilitator Micro-credential

Sample Training Provider Data Reporting

Enrollment Academic Year	Total Number of Participants Enrolled	Participant Training Completion Rates						Participant Assessment Pass Rates			
		Completed Training		Training In Progress		Withdrawn Training		Passed Assessments		Not-Passed Assessments	
		Count	Percent	Count	Percent	Count	Percent	Count	Percent	Count	Percent
2018-2019	50	46	92%	2	4%	2	4%	40	83%	8	17%
2019-2020	40	33	83%	4	10%	3	7.5%	30	81%	7	19%
<i>Total</i>	<i>90</i>	<i>79</i>	<i>87%</i>	<i>6</i>	<i>7%</i>	<i>5</i>	<i>6%</i>	<i>70</i>	<i>82%</i>	<i>15</i>	<i>18%</i>

Enrollment Academic Year	Total Number of Facilitators	Facilitators Holding Extra Qualifications to Facilitate			
		Completed Training	Completed Assessment Series	Completed BB Facilitator Micro-Credential	Total Completed Any of the Three
2018-2019	4	3	2	2	3
2019-2020	5	3	2	3	4

Preparing for Data Verification

Information including timeline and provider next steps have been updated in the [Mentor and Content Leader libraries](#).

To begin to prepare for this process, Mentor and Content Leader training providers should:

- have accurate enrollment information for participants in a copy of the [Enrollment Reporting Template](#) to use as a cross reference during verification.
- identify a point of contact within your program to verify information during the verification period, **08/16/2021-09/03/2021**.
- continue to monitor participant progress via Bloomboard's [in-platform reports](#).

