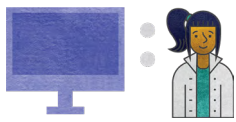




TECHNOLOGY FOOTPRINT

FRANKLIN PARISH SCHOOLS SNAPSHOT (6 SCHOOLS 2892 STUDENTS)

Since 2011, the state has been reporting school system progress relative to broadband and technology availability to students. This snapshot depicts current status in comparison to the state. [View the full report](#) providing an overview of Louisiana’s technology readiness and educational technology progress.



DEVICES

DISTRICT

STATE

AVERAGE STUDENT TO DEVICE RATIO	1.7:1	1.3:1
---------------------------------	-------	-------

PERCENT OF DEVICES BY TYPE:

TABLET	0%	4%
LAPTOP	76%	20%
CHROMEBOOK	0%	46%
DESKTOP	24%	29%



BANDWIDTH*

DISTRICT

STATE

AVERAGE BANDWIDTH PER STUDENT	3.458 MBPS	0.7 MBPS
-------------------------------	------------	----------



STAFFING

DISTRICT

STATE

EDUCATIONAL TECHNOLOGY STAFF	1	AVERAGE 2.8 PER DISTRICT
INFORMATION TECHNOLOGY STAFF	2	AVERAGE 6.8 PER DISTRICT

* Many Louisiana school systems utilize caching, peer-to-peer (P2P), and other network optimization technologies which ensure more efficient use of bandwidth resources resulting in lower broadband requirements for delivering expanded educational offerings.