

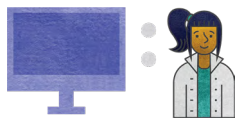


# TECHNOLOGY FOOTPRINT

JANUARY 2019

## LAKE FOREST ELEMENTARY CHARTER SCHOOL SNAPSHOT ( 1 SCHOOLS 646 STUDENTS )

Since 2011, the state has been reporting school system progress relative to broadband and technology availability to students. This snapshot depicts current status in comparison to the state. [View the full report](#) providing an overview of Louisiana’s technology readiness and educational technology progress.



### DEVICES

#### DISTRICT

#### STATE

AVERAGE STUDENT TO DEVICE RATIO	2.8:1	1.3:1
---------------------------------	-------	-------

#### PERCENT OF DEVICES BY TYPE:

TABLET	0%	4%
LAPTOP	100%	20%
CHROMEBOOK	0%	46%
DESKTOP	0%	29%



### BANDWIDTH\*

#### DISTRICT

#### STATE

AVERAGE BANDWIDTH PER STUDENT	0.464 MBPS	0.7 MBPS
-------------------------------	------------	----------



### STAFFING

#### DISTRICT

#### STATE

EDUCATIONAL TECHNOLOGY STAFF	2	AVERAGE 2.8 PER DISTRICT
INFORMATION TECHNOLOGY STAFF	0	AVERAGE 6.8 PER DISTRICT

\* Many Louisiana school systems utilize caching, peer-to-peer (P2P), and other network optimization technologies which ensure more efficient use of bandwidth resources resulting in lower broadband requirements for delivering expanded educational offerings.