

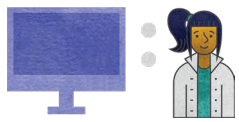


TECHNOLOGY FOOTPRINT

JANUARY 2019

NEW ORLEANS CHARTER SCIENCE AND MATHEMATICS HS SNAPSHOT (1 SCHOOLS 487 STUDENTS)

Since 2011, the state has been reporting school system progress relative to broadband and technology availability to students. This snapshot depicts current status in comparison to the state. [View the full report](#) providing an overview of Louisiana’s technology readiness and educational technology progress.



DEVICES

	DISTRICT	STATE
AVERAGE STUDENT TO DEVICE RATIO	1:1	1.3:1

PERCENT OF DEVICES BY TYPE:

TABLET	0%	4%
LAPTOP	21%	20%
CHROMEBOOK	79%	46%
DESKTOP	0%	29%



BANDWIDTH*

	DISTRICT	STATE
AVERAGE BANDWIDTH PER STUDENT	NR	0.7 MBPS



STAFFING

	DISTRICT	STATE
EDUCATIONAL TECHNOLOGY STAFF	1	AVERAGE 2.8 PER DISTRICT
INFORMATION TECHNOLOGY STAFF	1	AVERAGE 6.8 PER DISTRICT

* Many Louisiana school systems utilize caching, peer-to-peer (P2P), and other network optimization technologies which ensure more efficient use of bandwidth resources resulting in lower broadband requirements for delivering expanded educational offerings.