



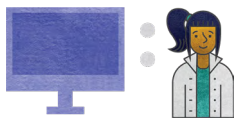


# TECHNOLOGY FOOTPRINT

JANUARY  
2019

## ST. JAMES PARISH SCHOOLS SNAPSHOT ( 8 SCHOOLS 3411 STUDENTS )

Since 2011, the state has been reporting school system progress relative to broadband and technology availability to students. This snapshot depicts current status in comparison to the state. [View the full report](#) providing an overview of Louisiana's technology readiness and educational technology progress.



### DEVICES

	DISTRICT	STATE
AVERAGE STUDENT TO DEVICE RATIO	1.1:1	1.3:1

### PERCENT OF DEVICES BY TYPE:

TABLET	0%	4%
LAPTOP	93%	20%
CHROMEBOOK	0%	46%
DESKTOP	7%	29%



### BANDWIDTH\*

	DISTRICT	STATE
AVERAGE BANDWIDTH PER STUDENT	1.466 MBPS	0.7 MBPS



### STAFFING

	DISTRICT	STATE
EDUCATIONAL TECHNOLOGY STAFF	1	AVERAGE 2.8 PER DISTRICT
INFORMATION TECHNOLOGY STAFF	2	AVERAGE 6.8 PER DISTRICT

\* Many Louisiana school systems utilize caching, peer-to-peer (P2P), and other network optimization technologies which ensure more efficient use of bandwidth resources resulting in lower broadband requirements for delivering expanded educational offerings.